

Electrical

Betts Clearance and/or Side Markers..... 47-54

Betts License Lamp and Stop, Turn, Tail, and/or Clearance and License..... 55-57

Betts Stop, Turn, and/or Tail..... 57-63

Betts Back-up Lamps..... 64-65

Betts Cabinet/Meter/Dome (Single Contact)..... 66-68

Betts Sealed Beam Flood, Spot, and/or Work Lamp..... 68-71

Betts Strobe..... 72-74

Betts LED Insert..... 75-77

Betts Lenses..... 78

Trucklite Lights..... 79-81

Solenoids, Switches, Breakers, Fuses, Boxes, etc..... 82-83

Junction Boxes and Accessories..... 83

Contacts, Cables, Clips, Harnesses, Shock Mount Sockets and Other Hardware..... 84-86

Receptacles and Plugs..... 85-86

Trucklite Mounts and Grommets..... 87-89

Information for Betts Lighting

s.c. = single contact
d.c. = double contact
N.P.T = National Pipe Thread

Easy Reference Color Coding For Betts Light Fixtures

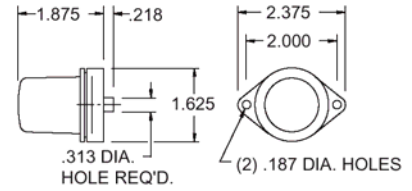
Red = Incandescent Lighting
Blue = LED Lighting
Black = Halogen/Strobe
Green = Miscellaneous (lenses, bulbs, etc.)

Replacement parts for lighting (bulbs, lenses, etc.) can be found mostly in the descriptions for each series of lights.

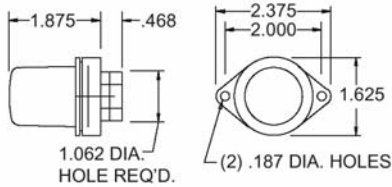


Combination Clearance and Side Marker

Features a deep **BEL920053** red or **BEL920054** amber deep lens. Uses a **BEL67** s.c. bulb. Surface mount.



| Part# | |
|------------------|----------------------|
| BEL240004 | Red, aluminum body |
| BEL240005 | Amber, aluminum body |



Combination Clearance and Side Marker

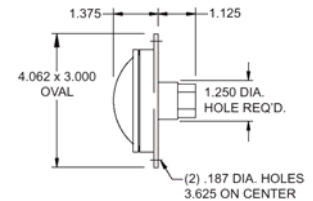
Features a deep **BEL920053** red or **BEL920054** amber deep lens. Uses a **BEL67** s.c. bulb. Provided with a 1/4" N.P.T. rear entry. Surface mount.



| Part# | |
|------------------|----------------------|
| BEL240011 | Red, aluminum body |
| BEL240012 | Amber, aluminum body |

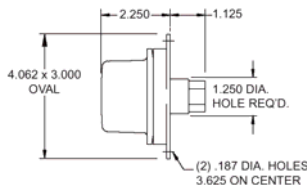
Combination Clearance and Side Marker

Incandescent bulb version features a **BEL920109** red or **BEL920110** amber shallow lens. Uses s.c. bulb socket **BEL920125** and a **BEL67** s.c. bulb. LED version features a s.c. bulb base **BEL510007** red or **BEL510008** amber shallow LED lens assembly. Both lamps are provided with a 1/4" N.P.T. rear entry and surface mount. Aluminum lamps to be discontinued upon Valox replacement availability.



For more information please contact DBL today

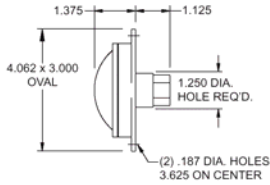
| Part# | |
|------------------|--------------------------|
| BEL500012 | Red, aluminum body |
| BEL500013 | Amber, aluminum body |
| BEL500212 | Red LED, aluminum body |
| BEL500213 | Amber LED, aluminum body |



Combination Clearance and Side Marker

Incandescent bulb version features a **BEL920116** red or **BEL920117** amber deep lens. Uses s.c. bulb socket **BEL920127** and a **BEL67** s.c. bulb. LED version features s.c. bulb base **BEL510017** red or **BEL510018** amber deep LED lens assembly. Both lamps are provided with a 1/4" N.P.T. rear entry and surface mount. Aluminum lamps to be discontinued upon Valox replacement availability.

| Part# | |
|------------------|--------------------------|
| BEL500014 | Red, aluminum body |
| BEL500015 | Amber, aluminum body |
| BEL500018 | Red LED, aluminum body |
| BEL500019 | Amber LED, aluminum body |



Combination Clearance and Side Marker

A special purpose d.c. incandescent lamp featuring a **BEL920116** red or **BEL920117** amber deep lens. Uses a d.c. bulb socket **BEL920126** and a **BEL1157** bulb.

LED version is available in either a shallow or deep lens. The deep version features a d.c. bulb base **BEL510037** red or **BEL510038** amber LED lens assembly. The shallow version features a d.c. bulb base **BEL510027** red or **BEL510028** amber LED lens assembly. Both lamps are provided with a 1/4" N.P.T. rear entry and surface mount.

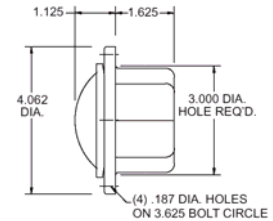
| Part# | Description |
|------------------|----------------------------------|
| BEL500018 | Red deep, aluminum body |
| BEL500019 | Amber deep, aluminum body |
| BEL500218 | Red deep LED, aluminum body |
| BEL500219 | Amber deep LED, aluminum body |
| BEL500223 | Red shallow LED, aluminum body |
| BEL500224 | Amber shallow LED, aluminum body |

Combination Clearance and Side Marker

Incandescent bulb version features a **BEL920109** red or **BEL920110** amber shallow lens. Uses a s.c. shock mount bulb socket **BEL920367** and a **BEL67** s.c. bulb.

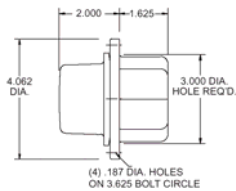
LED version in aluminum features a **BEL510005** red or **BEL510006** amber LED lens assembly. The Valox version features a **BEL510001** red or **BEL510002** amber LED lens assembly.

Both bodies must be drilled and tapped for wire entry unless otherwise stated. Recess mount. Available with choke seals installed upon request.



| Part# | Description |
|------------------|------------------------------|
| BEL560002 | Red shallow, aluminum body |
| BEL560003 | Amber shallow, aluminum body |
| BEL560019 | Red shallow, Valox body |
| BEL560020 | Amber shallow, Valox body |

| Part# | Description |
|------------------|----------------------------------|
| BEL560202 | Red shallow LED, aluminum body |
| BEL560203 | Amber shallow LED, aluminum body |
| BEL560219 | Red shallow LED, Valox body |
| BEL560220 | Amber shallow LED, Valox body |



Combination Clearance and Side Marker

Incandescent bulb version features a **BEL920116** red or **BEL920117** amber deep lens. Uses a s.c. shock mount bulb socket **BEL920104** and a **BEL67** bulb.

LED version in aluminum features a **BEL510015** red or **BEL510016** s.c. LED lens assembly. Valox lamps use **BEL510011** red or **BEL510012** amber s.c. LED lens assembly. Body must be drilled and tapped for wire entry unless otherwise stated. Recess mount. Also available with choke seal or ground strap.

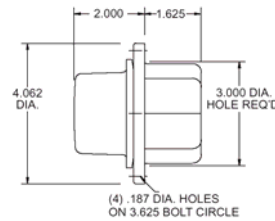
| Part# | Description |
|------------------|---------------------------|
| BEL560004 | Red deep, aluminum body |
| BEL560005 | Red deep, Valox body |
| BEL560006 | Amber deep, aluminum body |
| BEL560007 | Amber deep, Valox body |

| Part# | Description |
|------------------|-------------------------------|
| BEL560204 | Red deep LED, aluminum body |
| BEL560205 | Red deep LED, Valox body |
| BEL560206 | Amber deep LED, aluminum body |
| BEL560207 | Amber deep LED, Valox body |

Combination Clearance and Side Marker

A special purpose lamp with all the features of above lamps but equipped with a double contact shock mount bulb socket **BEL920103**. Uses a **BEL1157** d.c. bulb.

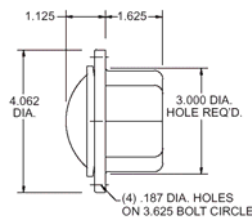
The LED version is available in both aluminum and Valox bodies. The lamp is also available in either a shallow or a deep lens. The deep lens aluminum body lamp uses a d.c. **BEL510035** red or a **BEL510036** amber LED lens assembly. The shallow lens aluminum body lamp uses a d.c. **BEL510025** red or a **BEL510026** amber LED lens assembly. The deep lens Valox lamp uses a d.c. **BEL510031** red or a **BEL510032** amber LED lens assembly. The shallow lens Valox body uses a d.c. **BEL510021** red or a **BEL510022** amber LED lens assembly. All bodies must be drilled and tapped for wire entry unless otherwise stated. Recess mount.



Also available with choke seals and ground straps

| Part# | Description |
|------------------|---------------------------|
| BEL560015 | Red deep, aluminum body |
| BEL560016 | Amber deep, aluminum body |
| BEL560023 | Red deep, Valox body |
| BEL560024 | Amber deep, Valox body |

| Part# | Description |
|------------------|-------------------------------|
| BEL560215 | Red deep LED, aluminum body |
| BEL560216 | Amber deep LED, aluminum body |
| BEL560223 | Red deep LED, Valox body |
| BEL560224 | Amber deep LED, Valox body |



Combination Clearance and Side Marker

A special purpose Valox lamp featuring a single, Multi-voltage d.c. diode. Lamps are available in either a shallow or a deep lens version. The deep lens version uses a **BEL510054** red or **BEL510053** amber LED lens assembly. The shallow lens version uses a **BEL510052** red or a **BEL510051** amber LED lens assembly. Body must be drilled and tapped for wire entry unless otherwise noted. Recess mount.

Available with cable choke seal installed.

For more information on Betts Lighting call DBL today

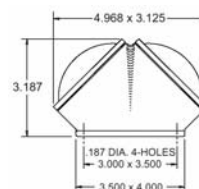
| Part# | Description |
|------------------|--|
| BEL560323 | Red deep Multi-voltage single LED, Valox body |
| BEL560324 | Amber deep Multi-voltage single LED, Valox body |
| BEL560351 | Red shallow Multi-voltage single LED, Valox body |
| BEL560352 | Amber shallow Multi-voltage single LED, Valox body |

Combination Clearance and Side Marker

A dual lens lamp available in an incandescent bulb or LED version. The bulb version features (2) shallow lenses, either (2) **BEL920109** red or **BEL920110** amber. The lamp uses (2) s.c. shock mount sockets and (2) **BEL67** s.c. bulbs.

The LED version features (2) s.c. **BEL510005** red or **BEL510006** amber LED lens assemblies.

Body must be drilled and tapped for wire entry. Surface mount.



| Part# | Description |
|------------------|----------------------------------|
| BEL560011 | Red shallow, aluminum body |
| BEL560012 | Amber shallow, aluminum body |
| BEL560211 | Red shallow LED, aluminum body |
| BEL560212 | Amber shallow LED, aluminum body |

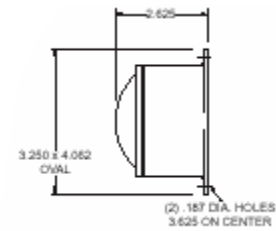
Combination Clearance and Side Marker

A lamp only previously available in aluminum is also now molded in tough durable Valox material as well. Both versions are available with a shallow or deep lens option. The incandescent bulb shallow lens version features a **BEL920109** red or **BEL920110** amber lens. The lamp uses a s.c. shock mount bulb socket **BEL920367** and a **BEL67** s.c. bulb. The incandescent bulb deep lens version features a **BEL920116** red or a **BEL 920117** amber lens. The lamp uses a s.c. shock mount bulb socket **BEL920104** and a **BEL67** s.c. bulb.

The LED shallow lens version features a **BEL510001** red or **BEL510002** amber s.c. LED lens assembly. The LED version is only available in Valox. The shallow version features a **BEL510001** red or a **BEL510002** amber s.c. LED lens assembly and the deep lens version features a **BEL510011** red or a **BEL510012** amber s.c. LED lens assembly.

Body must be drilled and tapped for wire entry. Surface Mount.

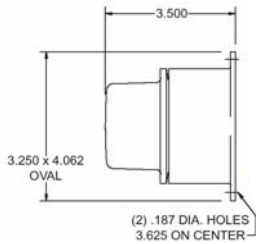
For more information please contact DBL



| Part# | Description |
|------------------|----------------------------------|
| BEL570001 | Red shallow, aluminum body |
| BEL570002 | Amber shallow, aluminum body |
| BEL570021 | Red shallow lights, Valox body |
| BEL570022 | Amber shallow lights, Valox body |

| Part# | Description |
|------------------|-------------------------------|
| BEL570221 | Red shallow LED, Valox body |
| BEL570222 | Amber shallow LED, Valox body |

Combination Clearance and Side Marker

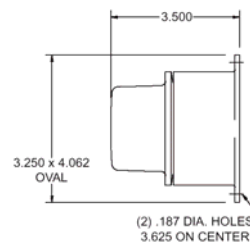


| Part# | Description |
|------------------|----------------------------|
| BEL570003 | Red deep, aluminum body |
| BEL570004 | Amber deep, aluminum body |
| BEL570023 | Red deep, Valox body |
| BEL570024 | Amber deep, Valox body |
| BEL570223 | Red deep LED, Valox body |
| BEL570224 | Amber deep LED, Valox body |

Combination Clearance and Side Marker

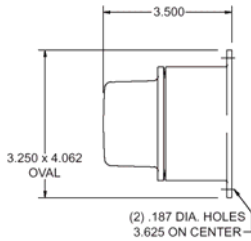
A special purpose lamp with all the features of the above lamps but equipped with a d.c. shock mount bulb socket **BEL920103** and a **BEL1157** d.c. bulb.

The LED version is only available in Valox. The shallow version features a **BEL510021** red or a **BEL510022** amber d.c. LED lens assembly and the deep lens version features a **BEL510031** red or a **BEL510032** amber d.c. LED lens assembly. Body must be drilled and tapped for wire entry. Surface Mount.



| Part# | Description |
|------------------|---------------------------|
| BEL570014 | Red deep, aluminum body |
| BEL570015 | Amber deep, aluminum body |
| BEL570034 | Red deep, Valox body |
| BEL570035 | Amber deep, Valox body |

| Part# | Description |
|------------------|-------------------------------|
| BEL570234 | Red deep LED, Valox body |
| BEL570235 | Amber deep LED, Valox body |
| BEL570239 | Red shallow LED, Valox body |
| BEL570240 | Amber shallow LED, Valox body |



Combination Clearance and Side Marker

A special purpose d.c., Valox lamp, featuring an LED lens assembly consisting of a single, multi-voltage d.c. diode.

The LED version is only available in Valox. The shallow version features a **BEL510052** red or a **BEL510051** amber d.c. LED lens assembly and the deep lens version features a **BEL510054** red or a **BEL510053** amber d.c. LED lens assembly.

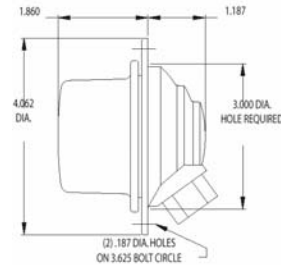
| Part# | Description |
|------------------|----------------------------|
| BEL570334 | Red deep LED, Valox body |
| BEL570335 | Amber deep LED, Valox body |

| Part# | Description |
|------------------|-------------------------------|
| BEL570339 | Red shallow LED, Valox body |
| BEL570340 | Amber shallow LED, Valox body |

Clearance or Side Marker

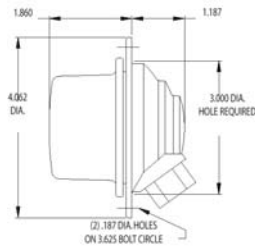
Incandescent version features a **BEL920109** red or a **BEL920110** amber shallow lens. Uses a s.c. bulb socket **BEL920125** and a **BEL67** s.c. bulb.

The shallow lens LED version uses a s.c. bulb base **BEL510007** red or **BEL510008** amber LED lens assembly. Provided with a 1/4" N.P.T. threaded entry. Recess mount. Aluminum lamps to be discontinued upon Valox replacement availability.



| Part# | Description |
|------------------|------------------------------|
| BEL600011 | Red shallow, aluminum body |
| BEL600012 | Amber shallow, aluminum body |

| Part# | Description |
|------------------|----------------------------------|
| BEL600211 | Red shallow, LED aluminum body |
| BEL600212 | Amber shallow, LED aluminum body |



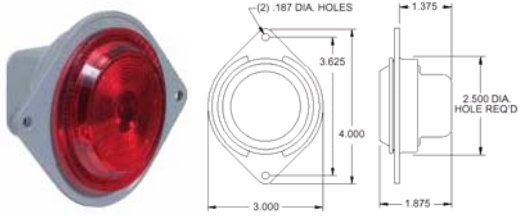
Clearance or Side Marker

A special purpose lamp featuring a **BEL920116** red or **BEL920117** amber deep lens. Uses a d.c. bulb socket **BEL920126** and an **BEL1157** bulb. The LED version is available in either a shallow or a deep lens.

The deep lens lamp uses a d.c. bulb base **BEL510037** red or a **BEL510038** amber LED lens assembly. The shallow lens lamp uses a d.c. bulb base **BEL510027** red or a **BEL510028** amber LED lens assembly. Provided with a 1/4" N.P.T. threaded entry. Recess mount. Aluminum lamps to be discontinued upon Valox replacement availability.

| Part# | Description |
|------------------|--------------------------------|
| BEL600013 | Red deep lens, aluminum body |
| BEL600014 | Amber deep lens, aluminum body |

| Part# | Description |
|------------------|--|
| BEL600213 | Red deep, LED lens, aluminum body |
| BEL600214 | Amber deep, LED lens, aluminum body |
| BEL600215 | Red shallow, LED lens, aluminum body |
| BEL600216 | Amber shallow, LED lens, aluminum body |



Clearance or Side Marker Two Side Entrances

Incandescent bulb version features a **BEL920228** red or a **BEL920229** amber shallow lens and is available in a gray or black Valox body. The **BEL168** s.c. bulb is mounted in a shock mount assembly for longer life. Provided with (1) or (2) **BEL920413** watertight and vapor proof choke seals.

The LED version is available in the same body colors and entrance configurations. It uses a **BEL660001** red or a **BEL660002** amber LED lens assembly. Recess mount.

For more information please contact DBL

| Part# | Description |
|------------------|-------------------------|
| BEL650001 | Red, Gray Valox body |
| BEL650002 | Amber, Gray Valox body |
| BEL651001 | Red, Black Valox body |
| BEL651002 | Amber, Black Valox body |

| Part# | Description |
|------------------|-----------------------------|
| BEL650201 | Red LED, Gray Valox body |
| BEL650202 | Amber LED, Gray Valox body |
| BEL651201 | Red LED, Black Valox body |
| BEL651202 | Amber LED, Black Valox body |

Clearance or Side Marker One Rear Entrance

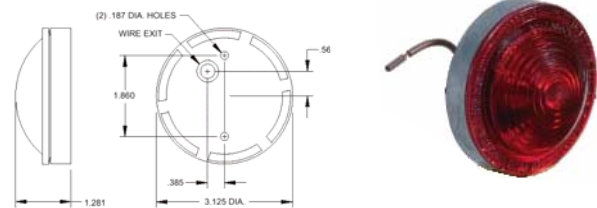
| Part# | Description |
|------------------|-------------------------|
| BEL650007 | Red, Gray Valox body |
| BEL650008 | Amber, Gray Valox body |
| BEL651007 | Red, Black Valox body |
| BEL651008 | Amber, Black Valox body |

| Part# | Description |
|------------------|-----------------------------|
| BEL650207 | Red, LED, Gray Valox body |
| BEL650208 | Amber LED, Gray Valox body |
| BEL651207 | Red LED, Black Valox body |
| BEL651208 | Amber LED, Black Valox body |

Clearance and Side Marker

A conventional grommet entry lamp with a shallow lens. Uses a **BEL67** s.c. bulb and **BEL910109** red or **BEL910110** amber lens. Surface mount.

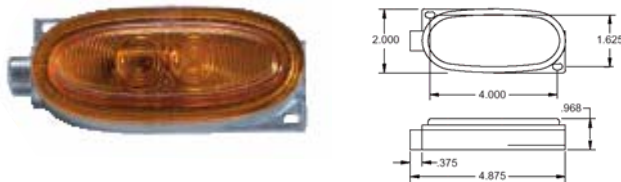
| Part# | Description |
|------------------|----------------------|
| BEL100011 | Red, aluminum body |
| BEL100012 | Amber, aluminum body |



Clearance and Side Marker One 1/8" N.P.T End Entrance

A low profile incandescent bulb version that features a **BEL920049** red or **BEL920050** amber lens. Lamp uses a **BEL67** s.c. bulb.

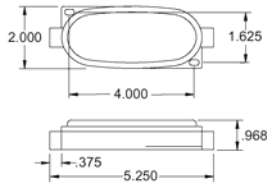
LED version features a **BEL201201** red or **BEL201202** amber LED lens assembly. Surface mount, can be mounted horizontally or vertically.



| Part# | Description |
|------------------|----------------------|
| BEL200011 | Red, aluminum body |
| BEL200012 | Amber, aluminum body |

| Part# | Description |
|------------------|--------------------------|
| BEL200211 | Red LED, aluminum body |
| BEL200212 | Amber LED, aluminum body |

**Clearance and Side Marker
Two 1/8" N.P.T Side Entrances**

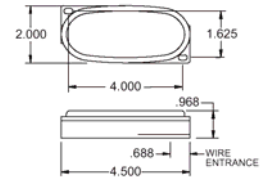


| Part# | Description |
|------------------|--------------------------|
| BEL210001 | Red, aluminum body |
| BEL210002 | Amber, aluminum body |
| BEL210201 | Red LED, aluminum body |
| BEL210202 | Amber LED, aluminum body |



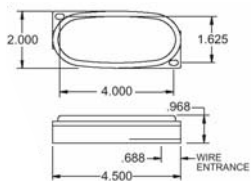
**Clearance and Side Marker
One 1/4" N.P.T Rear Entrance**

| Part# | Description |
|------------------|--------------------------|
| BEL211001 | Red, aluminum body |
| BEL211002 | Amber, aluminum body |
| BEL211201 | Red LED, aluminum body |
| BEL211202 | Amber LED, aluminum body |



**Clearance and Side Marker
Two 1/4" N.P.T Rear Entrances**

| Part# | Description |
|------------------|--------------------------|
| BEL212001 | Red, aluminum body |
| BEL212002 | Amber, aluminum body |
| BEL212201 | Red LED, aluminum body |
| BEL212202 | Amber LED, aluminum body |



**Clearance and Side Marker
Two 1/4" N.P.T Rear Entrances**

| Part# | Description |
|------------------|--------------------------|
| BEL213001 | Red, aluminum body |
| BEL213002 | Amber, aluminum body |
| BEL213201 | Red LED, aluminum body |
| BEL213202 | Amber LED, aluminum body |



Clearance and Side Marker

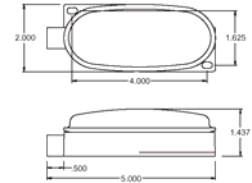
Incandescent bulb version features a REFLEX **BEL920058** red or a **BEL920059** amber lens. The lamp features a bulb replaceable shock mount socket and brass inserts with machine screws for positive connections and uses a **BEL168** s.c. bulb.

LED version uses a **BEL221201** red or **BEL221202** amber LED REFLEX lens assembly. Surface mount, can be mounted horizontally or vertically.

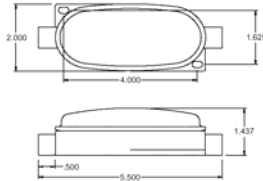
**Clearance or Side Marker
One 1/4" N.P.T Side Entrance**



| Part# | Description |
|------------------|-----------------------|
| BEL200017 | Red, Valox body |
| BEL200018 | Amber, Valox body |
| BEL200217 | Red LED, Valox body |
| BEL200218 | Amber LED, Valox body |



**Clearance or Side Marker
One 1/4" N.P.T End Entrance**



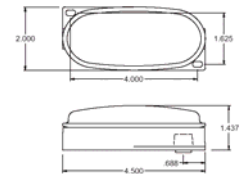
| Part# | Description |
|------------------|-----------------------|
| BEL210005 | Red, Valox body |
| BEL210006 | Amber, Valox body |
| BEL210205 | Red LED, Valox body |
| BEL210206 | Amber LED, Valox body |



**Clearance and Side Marker
One 1/4" N.P.T Rear Entrance**

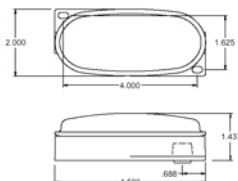


| Part# | Description |
|------------------|-----------------------|
| BEL211005 | Red, Valox body |
| BEL211006 | Amber, Valox body |
| BEL211205 | Red LED, Valox body |
| BEL211206 | Amber LED, Valox body |



**Clearance and Side Marker
Two 1/4" N.P.T Rear Entrance**

| Part# | Description |
|------------------|-----------------------|
| BEL212003 | Red, Valox body |
| BEL212004 | Amber, Valox body |
| BEL212203 | Red LED, Valox body |
| BEL212204 | Amber LED, Valox body |



**Clearance and Side Marker
Two 1/8" N.P.T Side Entrances**

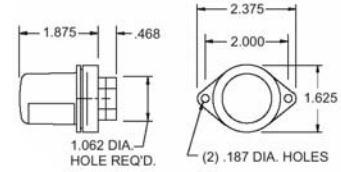
| | |
|------------------|-----------------------|
| BEL215001 | Red, Valox body |
| BEL215002 | Amber, Valox body |
| BEL215201 | Red LED, Valox body |
| BEL215202 | Amber LED, Valox body |



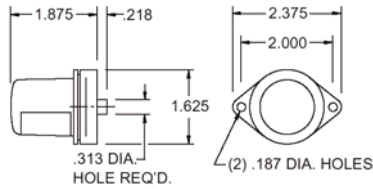


License Lamp

Threaded entry model license lamp. Uses a **BEL67** s.c. bulb and a **BEL920055** silver lens. Furnished with a 1/4 N.P.T. entrance. Surface mount.



| Part# | Description |
|------------------|--|
| BEL240001 | Silver, aluminum body |
| BEL240002 | Silver, aluminum body with a 920088 choke seal installed |
| BEL240009 | Silver, aluminum body with a 920045 choke seal installed and 4' of 2 conductor cable |



License Lamp

Features a **BEL920055** silver lens. Uses a **BEL67** s.c. bulb. Surface mount.

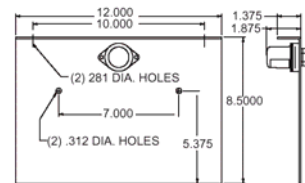
| Part# | Description |
|------------------|--|
| BEL240003 | Silver, aluminum body |
| BEL240008 | Silver, aluminum body with 4' of BSXL wire installed |



License Lamp

A grommet entry lamp **BEL240002** comes attached to a gray powder coated 12 gauge. steel license plate bracket **BEL920062**. Lamp features a silver **BEL920055** lens and uses a s.c. **BEL67** bulb.

| Part# | Description |
|------------------|-----------------------|
| BEL240010 | Silver, aluminum body |



License Lamp

A tough Valox body lamp available in an incandescent bulb or LED version. The incandescent bulb version features a **BEL920141** red lens, a **BEL920459** d.c. shock mount socket and an **BEL1157** bulb.

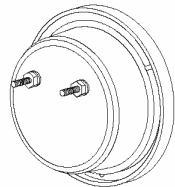
The LED version uses a **BEL710025** Multi-voltage single diode lens assembly. Body must be drilled and tapped for wire entry unless otherwise stated. Recess mount.

| Part# | Description |
|------------------|---|
| BEL400041 | Red, Valox body |
| BEL400061 | Red, Valox body with choke seals installed |
| BEL400068 | Red, Valox body (replaces 70-03222) |
| BEL400088 | Red, Valox body with ground strap (replaces 40-03222) |

| Part# | Description |
|------------------|--|
| BEL403041 | Red Multi-voltage single diode LED, Valox body |
| BEL403061 | Red Multi-voltage single diode LED, Valox body with (3) 920413 |
| BEL403068 | Red Multi-voltage single diode LED, Valox body with ground strap |
| BEL403088 | Red Multi-voltage single diode LED, Valox body with chassis ground |

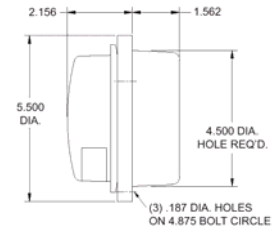


Valox Model



Stop/Turn Tall or Clearance and License

A compact size lamp available in both incandescent or LED. The lamp bodies are both currently offered in both aluminum or molded Valox. The incandescent bulb version features a **BEL920141** red lens and uses a **BEL920459** d.c. shock mount socket and **BEL1157** bulb. The LED version is only available in Valox and uses a **BEL710025** multi-voltage single LED lens assembly. Aluminum lamps to be discontinued at a future date.



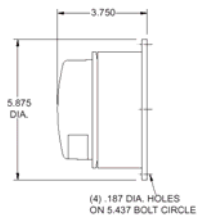
Other light options available, please call DBL for further details

| Part# | Description |
|------------------|---|
| BEL450030 | Red, Valox body |
| BEL450043 | Red, Valox body with 18" pigtails installed |
| BEL453030 | Red, Multi-voltage single diode LED, Valox body |
| BEL453043 | Red, Multi-voltage single diode LED, Valox body with 18" pigtails installed |

Stop/Turn or Clearance and License

A tough Valox body lamp available in an incandescent bulb or LED version. The incandescent bulb version features a 920141 red lens, a **BEL920459** d.c. shock mount socket and an **BEL1157** bulb.

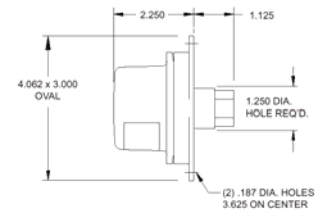
The LED version uses **BEL710025** Multi-voltage single diode lens assembly. Surface mount. Body must be drilled and tapped for wire entry.



| Part# | Description |
|------------------|---|
| BEL470022 | Red, Valox body |
| BEL473022 | Red, Multi-voltage single diode LED, Valox body |

License (S.C.)

An aluminum body lamp that features a **BEL920113** lens. Uses a **BEL920127** s.c. socket and **BEL67** bulb. Provided with a 1/4 N.P.T. rear entry. Surface mount. Aluminum lamps to be discontinued upon Valox replacement availability.

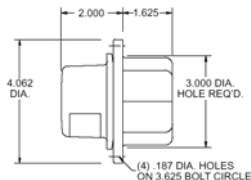


| Part# | Description |
|------------------|--------------------|
| BEL500021 | Red, aluminum body |

License (S.C.)

An incandescent lamp available in either aluminum or molded Valox. Features a **BEL920113** red lens and a uses a **BEL920104** s.c. shock mount socket and **BEL67** bulb.

Body must be drilled and tapped for wire entry unless otherwise stated. Recess mount. Aluminum lamps to be discontinued at a future date.

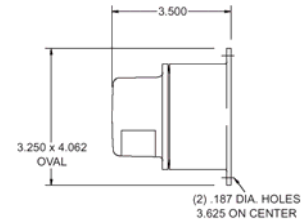


| Part# | Description |
|------------------|--|
| BEL560017 | Red, aluminum body |
| BEL560025 | Red, Valox body |
| BEL560034 | Red, Valox body with (1) 920413 choke seal installed |

License (S.C.)



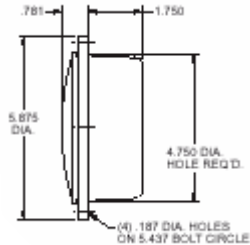
A lamp that was only previously offered in aluminum is now available in tough molded Valox. They both feature a **BEL920113** red lens and use a s.c. **BEL920104** shock mount socket and **BEL67** bulb. Surface mount. Body must be drilled for wire entry. Aluminum lamps to be discontinued at a future date.



| Part# | Description |
|------------------|--------------------|
| BEL570016 | Red, aluminum body |
| BEL570036 | Red, Valox body |

Stop, Turn, Tall Lamps

A Valox body lamp available in both incandescent and LED versions. The incandescent version features either a **BEL920134** red or a **BEL920135** amber shallow lens. Lamps are available in either a single contact or double contact function. The single contact uses a **BEL920460** socket and **BEL1156** bulb and the double contact uses a **BEL920459** socket and **BEL1157** bulb.



The LED version has two options for the number of LED's used in the assemblies. The 60 diode option uses a **BEL710001** red or **BEL710002** amber shallow LED lens assembly that can be used either as a single contact or double contact lamp. The Multi-volt-age single diode option is currently only available in a red double contact lamp and consists of a **BEL920134** red lens and **BEL920680** diode assembly. Body must be drilled for wire entry unless otherwise stated. Recess mount. Below are but a few of the different models available.



If you do not see what you need, please call DBL for our full line of Betts lights.

Turn (S.C.)

| Part# | Description |
|------------------|--|
| BEL400037 | Amber, Valox body |
| BEL400056 | Amber, Valox body with choke seals installed |
| BEL400083 | Amber, Valox body with ground strap |

| Part# | Description |
|------------------|---|
| BEL402037 | Amber LED, Valox body |
| BEL402056 | Amber LED, Valox body with choke seals |
| BEL402083 | Amber LED, Valox body with ground strap |

Stop or Turn (S.C.)

| Part# | Description |
|------------------|--|
| BEL400036 | Red, Valox body |
| BEL400055 | Red, Valox body with choke seals installed |
| BEL400064 | Red, Valox body with ground strap and a 1/4 N.P.T. hole in rear center |
| BEL400074 | Red, Valox body with 18" pigtails installed |
| BEL400082 | Red, Valox body with ground strap |

Stop, Turn, Tall or Clearance (D.C.)

| Part# | Description |
|------------------|---|
| BEL400039 | Red Valox body |
| BEL400053 | Red, Valox body with 18" pigtails installed |
| BEL400086 | Red, Valox body with ground strap |

| Part# | Description |
|------------------|---------------------------------------|
| BEL402039 | Red LED, Valox body |
| BEL402053 | Red LED, Valox body with 18" pigtails |
| BEL402086 | Red LED, Valox body with ground strap |

Multi-Volt Stop, Turn, Tall or Clearance (D.C.)

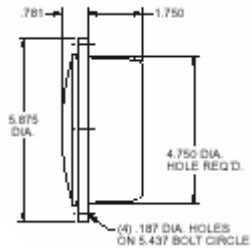
| Part# | Description |
|------------------|---------------------|
| BEL403039 | Red LED, Valox body |

| Part# | Description |
|------------------|---------------------------------------|
| BEL403086 | Red LED, Valox body with ground strap |

Stop, Turn, Tall Lamps

Valox body lamp available in both incandescent and LED versions. The incandescent version features either a **BEL920144** red or a **BEL920145** amber deep lens. Lamps are available in either a single contact or double contact function. The single contact uses a **BEL920460** socket and **BEL1156** bulb and the double contact uses a **BEL920459** socket and **BEL1157** bulb.

The LED version uses a **BEL710011** red or **BEL710012** amber deep LED lens assembly that can be used either as a single contact or double contact lamp. Body must be drilled for wire entry unless otherwise stated. Recess mount.



If you do not see the style you need please call DBL for our full line of Betts Lights.

Turn (S.C.)

| Part# | Description |
|------------------|--|
| BEL400058 | Amber, Valox body with choke seals installed |
| BEL400070 | Amber, Valox body |
| BEL400085 | Amber, Valox body with ground strap |

| Part# | Description |
|------------------|---|
| BEL402058 | Amber LED, Valox body with choke seals |
| BEL402070 | Amber LED, Valox body |
| BEL402085 | Amber LED, Valox body with ground strap |

Stop or Turn (S.C.)

| Part# | Description |
|------------------|--|
| BEL400038 | Red, Valox body |
| BEL400057 | Red, Valox body with choke seals installed |
| BEL400084 | Red, Valox body with ground strap |

Stop, Turn, Tall or Clearance (D.C.)

| Part# | Description |
|------------------|--|
| BEL400040 | Red, Valox body |
| BEL400060 | Red, Valox body with choke seals installed |
| BEL400067 | Red, Valox body with ground strap and a 1/4 N.P.T. hole in rear center |
| BEL400087 | Red, Valox body with ground strap |

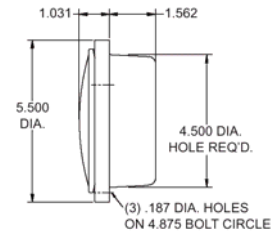
| Part# | Description |
|------------------|--|
| BEL402040 | Red LED, Valox body |
| BEL402060 | Red LED, Valox body with choke seals |
| BEL402067 | Red LED, Valox body with ground strap and a 1/4 N.P.T. hole in rear center |
| BEL402087 | Red LED, Valox body with ground strap |

Stop, Turn, Tall Lamps

A compact size lamp available in both incandescent and LED versions. The lamp bodies are both currently offered in both aluminum or molded Valox. The incandescent version features either a **BEL920134** red or a **BEL920135** amber shallow lens. Lamps are available in either a single contact or double contact function. The single contact uses a **BEL920460** socket and **BEL1156** bulb and the double contact uses a **BEL920459** socket and **BEL1157** bulb.



The LED versions have two options for the number of LED's used in the assemblies. The Valox 60 diode version uses a **BEL710001** red or **BEL710002** amber shallow LED lens assembly. The Valox Multi-voltage single diode version uses a **BEL20134** red lens and **BEL920680** diode assembly. The aluminum 60 diode version uses a **BEL710003** red or a **BEL710004** amber shallow LED lens assembly. The aluminum Multi-voltage single diode version uses a **BEL920134** red lens and **BEL920680** diode assemble. The LED lens assemblies can be used either as a single contact or double contact lamp. Body must be drilled for wire entry unless otherwise stated. Recess mount



Note: Aluminum bodies to be discontinued at a future date.

Models with choke seals, conductor cables, and mount studs also available, please call DBL if you have any questions

Turn (S.C.)

| Part# | Description |
|------------------|------------------------------------|
| BEL450002 | Amber, aluminum body |
| BEL450025 | Amber, Valox body |
| BEL450048 | Amber, Valox body with 18" pigtail |

| Part# | Description |
|------------------|--|
| BEL452002 | Amber LED, aluminum body |
| BEL452025 | Amber LED, Valox body |
| BEL452048 | Amber LED, Valox body with 18" pigtail |

Stop or Turn (S.C.)

| Part# | Description |
|------------------|----------------------------------|
| BEL450001 | Red, aluminum body |
| BEL450024 | Red, Valox body |
| BEL450047 | Red, Valox body with 18" pigtail |

| Part# | Description |
|------------------|--|
| BEL452020 | Red LED, aluminum body with 18" pigtail |
| BEL452047 | Red LED, Valox body with 18" pigtail |
| BEL453047 | Red Multi-voltage LED, Valox body with 18" pigtail installed |

Stop or Turn (S.C.)

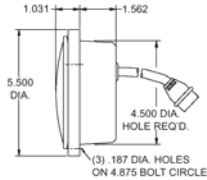
| Part# | Description |
|------------------|-------------------------------------|
| BEL450005 | Red, aluminum body |
| BEL450012 | Red, aluminum body with 18" pigtail |
| BEL450028 | Red, Valox body |
| BEL450042 | Red, Valox body with 18" pigtail |

| Part# | Description |
|------------------|---|
| BEL452005 | Red LED, aluminum body |
| BEL452012 | Red LED, aluminum body with 18" pigtail |
| BEL452028 | Red LED, Valox body |
| BEL452042 | Red LED, Valox body with 18" pigtail |



Stop, Turn, Tall or Clearance

No more replacing of expensive throw-away lamps. The Betts "Smart 45" is a permanent lamp with either a replaceable bulb or LED version. It replaces most 4" lamps. It features a 6" 3 conductor plug that will fit most existing harnesses from other manufacturers. The incandescent version uses a **BEL920134** red lens and **BEL920459** double contact shock stopper socket with a **BEL1157** bulb or a **BEL920135** amber lens with a **BEL920460** single contact shock stopper socket and **BEL1156** bulb.



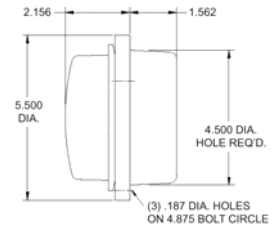
The LED version is available in two versions. The 60 diode version uses a **BEL710001** red or a **BEL710002** amber LED lens assembly. The single Multi-voltage diode version uses a **BEL920134** red lens and either a **BEL920680** or **BEL920691** diode assembly.

| Part# | Description |
|------------------|---|
| BEL452069 | Red LED, black Valox body |
| BEL452070 | Amber LED, black Valox body |
| BEL453069 | Red Multi-voltage LED, black Valox body |

| Part# | Description |
|------------------|---|
| BEL453070 | Amber Multi-voltage LED, black Valox body |
| BEL450069 | Red, with black Valox body |

Stop, Turn, Tall Lamps

A compact size lamp available in both incandescent and LED versions. The lamp bodies are both currently offered in both aluminum or molded Valox. The incandescent version features either a **BEL920144** red or a **BEL920145** amber deep lens. Lamps are available in either a single contact or double contact function. The single contact uses a **BEL920460** socket and **BEL1156** bulb and the double contact uses a **BEL920459** socket and **BEL1157** bulb.



The LED is available in both aluminum and Valox 60 diode versions. The Valox version uses a **BEL710011** red or **BEL710012** amber deep LED lens assembly. The aluminum LED version uses a **BEL710013** red or a **BEL710014** amber deep LED lens assembly. The LED lens assemblies can be used either as a single contact or double contact lamp. Body must be drilled for wire entry unless otherwise stated.
Note: Aluminum bodies to be discontinued at a future date.

For any additional information or question please call DBL today

Turn (S.C.)

| Part# | Description |
|------------------|------------------------------------|
| BEL450004 | Amber, aluminum body |
| BEL450027 | Amber, Valox body |
| BEL450053 | Amber, Valox body with choke seals |

| Part# | Description |
|------------------|--|
| BEL452004 | Amber LED, aluminum body |
| BEL452027 | Amber LED, Valox body |
| BEL452053 | Amber LED, Valox body with choke seals |

Stop or Turn (S.C.)

| Part# | Description |
|------------------|----------------------------------|
| BEL450003 | Red, aluminum body |
| BEL450026 | Red, Valox body |
| BEL450052 | Red, Valox body with choke seals |

Stop, Turn, Tall or Clearance (S.C.)

| Part# | Description |
|------------------|----------------------------------|
| BEL450006 | Red, aluminum body |
| BEL450029 | Red, Valox body |
| BEL450055 | Red, Valox body with choke seals |

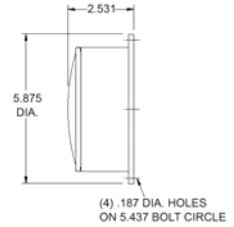
| Part# | Description |
|------------------|--------------------------------------|
| BEL452006 | Red LED, aluminum body |
| BEL452029 | Red LED, Valox body |
| BEL452055 | Red LED, Valox body with choke seals |



Stop, Turn, Tall Lamps

A surface mount lamp available in both incandescent and LED versions. The incandescent version features a **BEL920134** red or a **BEL920135** amber shallow lens and uses a **BEL920460** s.c. socket and a **BEL1156** bulb or a **BEL920459** d.c. socket and a **BEL1157** bulb.

The LED version uses a **BEL710001** red or a **BEL710002** amber LED lens assembly. Surface mount. Body must be drilled and tapped for wire entry.



Turn (S.C.)

| Part# | Description |
|------------------|-----------------------|
| BEL470017 | Amber, Valox body |
| BEL472017 | Amber LED, Valox body |

Stop, Turn or Tall (S.C.)

| Part# | Description |
|------------------|--|
| BEL470020 | Red, Valox body |
| BEL472020 | Red, LED Valox body |
| BEL473020 | Red Multi-voltage single LED, Valox body |

Stop or Turn (S.C.)

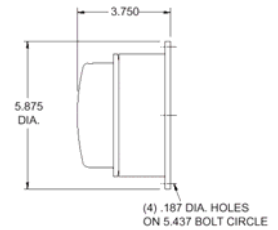
| Part# | Description |
|------------------|-----------------|
| BEL470016 | Red, Valox body |



Stop, Turn, Tall Lamps

A surface mount lamp available in both incandescent and LED versions. The incandescent version features a **BEL920134** red or a **BEL920135** amber shallow lens and uses a **BEL920460** s.c. socket and a **BEL1156** bulb or a **BEL920459** d.c. socket and a **BEL1157** bulb.

The LED version uses a **BEL710001** red or a **BEL710002** amber LED lens assembly. Surface mount. Body must be drilled and tapped for wire entry.



Turn (S.C.)

| Part# | Description |
|------------------|----------------------|
| BEL470019 | Amber, Valox body |
| BEL472019 | Amber LED Valox body |

Turn (S.C.)

| Part# | Description |
|------------------|---------------------|
| BEL470021 | Red, Valox body |
| BEL472021 | Red, LED Valox body |

Stop or Turn (S.C.)

| Part# | Description |
|------------------|-----------------|
| BEL470018 | Red, Valox body |

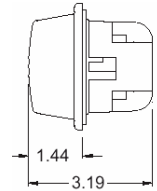
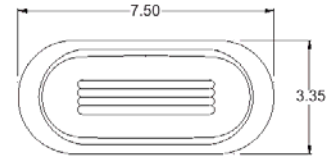
Stop, Turn, Tail Lamps

A tough nylon bodied lamp available in both an incandescent or Multi-voltage LED version. Both versions feature a **BEL920454** red or a **BEL920464** amber lens. The incandescent version uses a **BEL920460** s.c. socket and **BEL1156** bulb or a **BEL920459** d.c. socket and **BEL1157** bulb.



The LED version features a **BEL920685** red LED assembly for front or rear stop, turn, and tail. For amber, two assemblies are utilized - a **BEL920686** LED assembly for a side turn and marker or a **BEL920692** for rear turn only. Bodies are available with either a cable choke seal entrance or a wire choke seal entrance. Recess mount.

If you cannot find the part you are looking for please call DBL for assistance.



Turn (S.C.)

| Part# | Description |
|------------------|--|
| BEL730003 | Amber, with 920413 cable choke seal |
| BEL730013 | Amber, with 920420 wire choke seal |
| BEL735003 | Amber Multi-voltage single diode LED, with 920413 cable choke seal |

Stop or Turn (S.C.)

| Part# | Description |
|------------------|-----------------------------------|
| BEL730002 | Red, with 920413 cable choke seal |
| BEL730012 | Red, with 920420 wire choke seal |

Side Turn/Marker (D.C.)

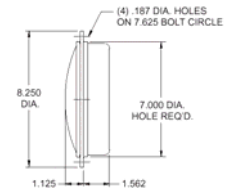
| Part# | Description |
|------------------|--|
| BEL730005 | Amber, with 920413 cable choke seal |
| BEL730007 | Amber, plug-in replacement lamp with 3 conductor female plug |
| BEL733003 | Amber Multi-voltage single diode LED, with 920413 cable choke seal |
| BEL733007 | Amber Multi-voltage single diode LED, plug in replacement lamp with 3 conductor plug |

Stop, Turn, Tail or Clearance (D.C.)

| Part# | Description |
|------------------|--|
| BEL730001 | Red, with 920413 cable choke seal |
| BEL730006 | Red, plug-in replacement lamp with 3 conductor plug |
| BEL733001 | Red Multi-voltage single diode LED, with 920413 cable choke seal |
| BEL733006 | Red Multi-voltage single diode LED, plug in replacement lamp with 3 conductor plug |

77 Series Stop, Turn, Tail Lamps

77 series lamps feature a Valox body and are available in an incandescent or a red LED version. The incandescent bulb version features a **BEL920152** red or a **BEL920153** amber lens. The single contact lamp uses a **BEL920460** socket and **BEL1156** bulb and the double contact lamp uses a **BEL920459** socket and **BEL1157** bulb. The LED version uses a **BEL920687** red LED assembly that can either be used as a single or double contact lamp. Bodies must be drilled and tapped for wire entry unless otherwise stated. Recess mount.



Turn (S.C.)

| Part# | Description |
|------------------|--|
| BEL770002 | Amber |
| BEL770005 | Amber, with 12 feet of 2 conductor cable |

Stop Turn, Tail or Clearance (D.C.)

| Part# | Description |
|------------------|--|
| BEL770003 | Red, Valox body |
| BEL770006 | Red, Valox body with 12 feet of 3 conductor cable |
| BEL773001 | Red, Multi-voltage single diode LED |
| BEL773006 | Red, Multi-voltage single diode LED, with 12 feet of 3 conductor cable installed |

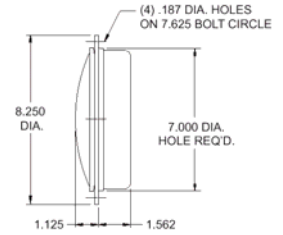
Stop or Turn (S.C.)

| Part# | Description |
|------------------|--|
| BEL770001 | Red |
| BEL770004 | Red, with 12 feet of 2 conductor cable |
| BEL773023 | Red, Multi-voltage single diode LED |

Series 77 Turn (S.C.)



77 series lamps feature a Valox body and are available in an incandescent or a LED version. The incandescent bulb version features a **BEL920156** red arrow or a **BEL920157** amber arrow lens and uses a **BEL920460** socket and **BEL1156** bulb. The LED version uses a **BEL920687** red LED assembly for the red arrow or a **BEL920688** amber LED assembly for the amber arrow lens. Bodies must be drilled and tapped for wire entry unless otherwise stated. Recess mount. Also available with conductor cable and mounting studs (not listed).



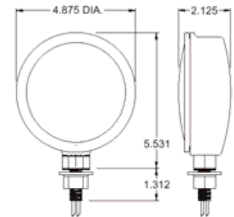
| Part# | Description |
|------------------|-------------------|
| BEL770021 | Red, Valox body |
| BEL770022 | Amber, Valox body |

| Part# | Description |
|------------------|---------------------------------------|
| BEL773021 | Red, Multi-voltage single diode LED |
| BEL773022 | Amber, Multi-voltage single diode LED |

Stop, Turn and Tall



Pedestal mount aluminum body lamp available in a incandescent and LED version. Incandescent bulb version features a **BEL920134** red or **BEL 920135** amber lens. The single contact bulb version uses a **BEL920015** s.c. socket and **BEL1156** bulb and the double contact lamp uses a **BEL920013** d.c. socket and **BEL1157** bulb. The LED versions use a **BEL710003** red or **BEL710004** amber LED lens assembly. Requires a mounting hole large enough to accommodate a 9/16 inch diameter stud mount. Lamps include 18 inch pigtails.



Turn (S.C.)

| Part# | Description |
|------------------|----------------------|
| BEL810012 | Amber, aluminum body |
| BEL810212 | Amber LED, aluminum |

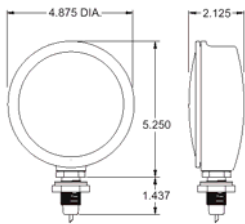
Stop Turn, Tall, or Clearance (D.C.)

| Part# | Description |
|------------------|--------------------|
| BEL810013 | Red, aluminum body |
| BEL810213 | Red LED, aluminum |

Stop or Turn (S.C.)

| Part# | Description |
|------------------|--------------------|
| BEL810011 | Red, aluminum body |

Stop, Turn and Tall



Pedestal mount aluminum body lamp available in a incandescent and LED version. Incandescent bulb version features a **BEL920134** red or **BEL920135** amber lens. The single contact bulb version uses a **BEL920015** s.c. socket and **BEL1156** bulb and the double contact lamp uses a **BEL920013** d.c. socket and **BEL1157** bulb. The LED versions use a **BEL710003** red or **BEL710004** amber LED lens assembly. Requires a mounting hole large enough to accommodate a 13/16 inch diameter stud mount. Lamps include 18 inch pigtails.



Turn (S.C.)

| Part# | Description |
|------------------|----------------------|
| BEL800012 | Amber, aluminum body |
| BEL800212 | Amber LED, aluminum |

Stop, Turn, Tall, or Clearance (D.C.)

| Part# | Description |
|------------------|--------------------|
| BEL800013 | Red, aluminum body |
| BEL800213 | Red LED, aluminum |

Stop or Turn (S.C.)

| Part# | Description |
|------------------|--------------------|
| BEL800011 | Red, aluminum body |

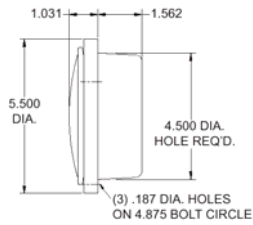
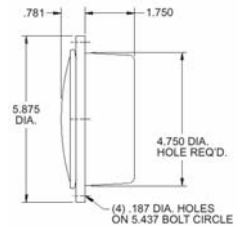
Back-Up Lamps

Back up lamps are now available in incandescent or LED versions. The incandescent version features a **BEL920139** clear lens and a **BEL920460** socket and **BEL1156** bulb. The LED version uses a **BEL920691** clear LED assembly. Bodies must be drilled and tapped for wire entry unless otherwise noted. Recess mount.

NOTE: Two back up lamps are required per vehicle to meet F.M.V.S.S. 108 conformance.



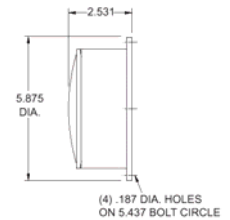
| Part# | Description |
|------------------|---|
| BEL400043 | Clear, Valox body |
| BEL400063 | Clear, Valox body with choke seals |
| BEL400075 | Clear, Valox body (replaces 70-04112) |
| BEL400089 | Clear, Valox body with chassis ground |
| BEL405043 | Clear, Multi-voltage single diode LED, Valox body |



| Part# | Description |
|------------------|--|
| BEL450008 | Clear, aluminum body |
| BEL450018 | Clear, aluminum body conductor cable |
| BEL450032 | Clear, Valox body |
| BEL450057 | Clear, Valox body with choke seals |
| BEL450067 | Clear, Valox body with conductor cable |
| BEL455032 | Clear, Multi-voltage single diode LED, Valox body |
| BEL455067 | Clear, Multi-voltage single diode LED, Valox body with conductor cable |



| Part# | Description |
|------------------|---|
| BEL470024 | Clear, Valox body |
| BEL475024 | Clear, Multi-voltage single diode LED, Valox body |

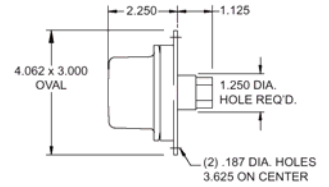




Back-Up Lamp

Back-up lamp with a 1/4" N.P.T. threaded rear entry. Lamp features a **BEL920112** deep clear lens and a **BEL920460** single contact bulb socket with a **BEL1156** bulb. Surface mount.

NOTE: Two back up lamps are required per vehicle to meet F.M.V.S.S. 108 conformance.



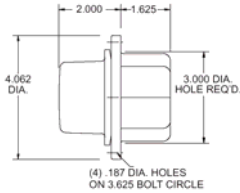
| Part# | Description |
|------------------|----------------------|
| BEL500011 | Clear, aluminum body |

Back-Up Lamp

Back-up lamp featuring both a Valox or aluminum body. Both bodies feature a **BEL920112** deep clear lens and use a **BEL920367** socket with a **BEL1156** bulb. Bodies must be drilled and tapped for wire entrance unless noted. Recess mount.

NOTE: Two back up lamps are required per vehicle to meet F.M.V.S.S. 108 conformance. Aluminum bodies to be discontinued at a future date.

For further information on any Betts product, contact DBL

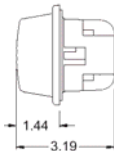
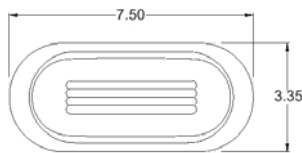


| Part# | Description |
|------------------|-----------------------------------|
| BEL560001 | Clear, aluminum body |
| BEL560027 | Clear, Valox body with choke seal |
| BEL560037 | Clear, Valox body |

Back-Up Lamp

A tough nylon bodied lamp available in both an incandescent or Multi-voltage LED version. Both versions feature a **BEL920497** clear lens. The incandescent version uses a **BEL920459** s.c. socket and **BEL1156** bulb. The LED version features a **BEL920692** clear LED assembly. Bodies must be drilled and tapped for wire entry unless otherwise noted. Recess mount.

NOTE: Two back up lamps are required per vehicle to meet F.M.V.S.S. 108 conformance.

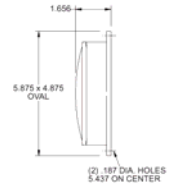


| Part# | Description |
|------------------|---|
| BEL730004 | Clear, with 920413 cable choke seal |
| BEL730008 | Clear, plug-in replacement lamp with 3 conductor plug |
| BEL730014 | Clear, with 920420 wire choke seal |
| BEL735004 | Clear, Multi-voltage single diode LED, with 920413 cable choke seal |
| BEL735008 | Clear, Multi-voltage single diode LED, plug in replacement lamp with 3 conductor plug |

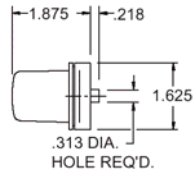


Cabinet/Meter/Dome (S.C)

Low profile dome or cabinet light with a **BEL920077** 3 amp toggle switch and a **BEL920133** clear shallow lens. Incandescent lamp uses a **BEL920014** socket and **BEL1141** bulb. LED version is only available in Valox and uses a **BEL710026** lens assembly. Internal ground must be provided. Surface mount.

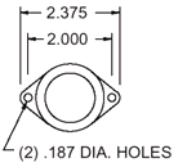


| Part# | Description |
|------------------|---|
| BEL820011 | Clear, aluminum body |
| BEL820317 | Clear, Multi-voltage single diode LED, Valox body |



Cabinet/Meter/Dome (S.C)

Features a **BEL920055** polycarbonate deep lens and flat back aluminum body. Lamp uses a s.c. **BEL67** bulb only. Surface mount.

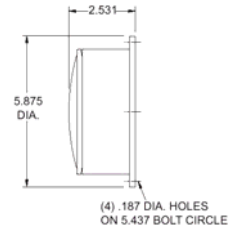


| Part# | Description |
|------------------|----------------------|
| BEL820011 | Clear, aluminum body |

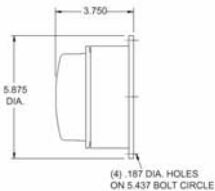


Cabinet/Meter/Dome (S.C)

A dome or cabinet light with a **BEL920038** 20 amp toggle switch and a **BEL920140** clear deep lens. Lamp uses a **BEL920460** shock mount socket and **BEL1141** bulb. LED version uses a **BEL710027** lens assembly. Internal ground must be provided. Surface mount. Lamp must be drilled and tapped for wire entry.



| Part# | Description |
|------------------|---|
| BEL470043 | Clear, Valox body |
| BEL470343 | Clear, Multi-voltage single diode LED, Valox body |



Cabinet/Meter/Dome (S.C)

A threaded entry model dome or cabinet light with a **BEL920115** clear shallow lens. Lamp uses a **BEL920125** socket and a s.c. **BEL67** bulb only. Furnished with a 1/4" N.P.T. wire entrance. Surface mount. Aluminum lamps to be discontinued upon Valox replacement availability.

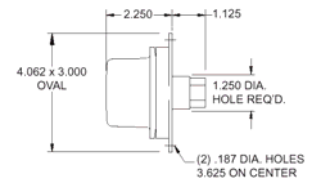


| Part# | Description |
|------------------|-------------------|
| BEL470043 | Clear, Valox body |



Cabinet/Meter/Dome (S.C)

A threaded entry model dome or cabinet light with a **BEL920111** clear deep lens. Lamp uses a **BEL920125** socket and a s.c. **BEL1141** bulb only. Furnished with a 1/4" N.P.T. wire entrance. Surface mount. Aluminum lamps to be discontinued upon Valox replacement availability.

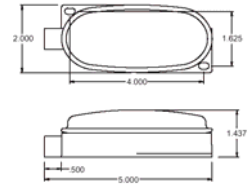


| Part# | Description |
|------------------|----------------------|
| BEL500017 | Clear, aluminum body |

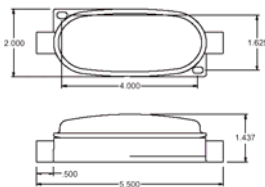


Cabinet/Meter/Dome (S.C)

A dome, meter, or cabinet light available in both aluminum or Valox bodies. Aluminum bodies feature a 1/8" N.P.T. wire entrance and the Valox body features a 1/4" N.P.T. entrance on one side. The aluminum body features a **BEL920048** clear lens and a **BEL67** bulb. The Valox body uses a **BEL920057** clear lens and a **BEL168** bulb. Surface mount.



| Part# | Description |
|------------------|-----------------------|
| BEL200023 | Clear, aluminum body |
| BEL200024 | Clear, Valox body |
| BEL200224 | Clear LED, Valox Body |



Cabinet/Meter/Dome (S.C)

A dome, meter, or cabinet light available in both aluminum or Valox bodies. Aluminum bodies feature a 1/8" N.P.T. wire entrance and the Valox body features a 1/4" N.P.T. entrance on both sides. The aluminum body features a **BEL920048** clear lens and a **BEL67** bulb. The Valox body uses a **BEL920057** clear lens and a **BEL168** bulb. Surface mount.



| Part# | Description |
|------------------|----------------------|
| BEL210009 | Clear, aluminum body |
| BEL210010 | Clear, Valox body |

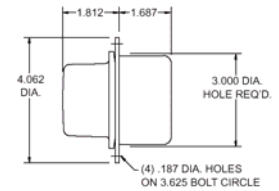
Cabinet/Meter/Dome (S.C)

A dome, meter, or cabinet light available in both aluminum or Valox bodies and in a deep or shallow lens. Lamps are also available in incandescent bulb or LED versions. Incandescent bulb versions feature a **BEL920115** clear shallow lens and a **BEL920367** socket and **BEL1141** s.c. bulb. The LED versions feature a **BEL510055** shallow LED lens assembly or a **BEL510056** deep LED lens assembly. Bodies must be drilled and tapped for wire entry unless otherwise specified. Aluminum bodies to be discontinued at a future date. Recess mount.



Cabinet/Meter/Dome Shallow Lens (S.C.)

| Part# | Description |
|------------------|---|
| BEL560008 | Clear, aluminum body |
| BEL560036 | Clear, Valox body |
| BEL560381 | Clear, Multi-voltage single diode LED, Valox body |
| BEL560383 | Clear, Multi-voltage single diode LED, Valox body with choke seal installed |



Cabinet/Meter/Dome Shallow Lens (S.C.)

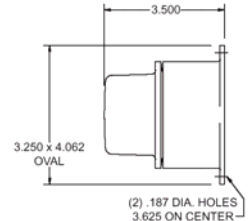
| Part# | Description |
|------------------|---|
| BEL560009 | Clear, aluminum body |
| BEL560382 | Clear, Multi-voltage single diode LED, Valox body |
| BEL560384 | Clear, Multi-voltage single diode LED, Valox body with BEL920413 choke seal installed |

Cabinet/Meter/Dome (S.C)

A dome, meter, or cabinet light available in both aluminum or Valox bodies and in a deep or shallow lens. Lamps are also available in incandescent bulb or LED versions.

BEL920078 3 amp switches are available in the deep lens incandescent bulb version and in both deep and shallow lens LED versions. Incandescent bulb versions feature a **BEL920115** clear shallow lens and a **BEL920367** socket with a **BEL67** s.c. bulb or a **BEL920111** clear deep lens with a **BEL920367** socket and **BEL1141** s.c. bulb only. The LED versions feature a **BEL510055** shallow LED lens assembly or a **BEL510056** deep LED lens assembly. Surface mount. Bodies must be drilled and tapped for wire entry unless otherwise specified. Aluminum bodies to be discontinued at a future date.

For more information please contact DBL

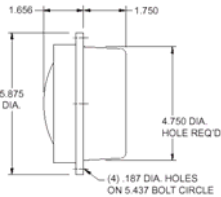


Cabinet/Meter/Dome Shallow Lens (S.C.)

| Part# | Description |
|------------------|--|
| BEL570005 | Clear, aluminum body without switch |
| BEL570025 | Clear, Valox body without switch |
| BEL570325 | Clear, Multi-voltage single diode LED, Valox body without switch |
| BEL570344 | Clear, Multi-voltage single diode LED, Valox body with switch |

Cabinet/Meter/Dome Deep Lens (S.C.)

| Part# | Description |
|------------------|--|
| BEL570006 | Clear, aluminum body with switch |
| BEL570026 | Clear, Valox body with switch |
| BEL570326 | Clear, Multi-voltage single diode LED, Valox body with switch |
| BEL570342 | Clear, Multi-voltage single diode LED, Valox body without switch |



Sealed Beam Flood, Spot, and Work Lamp

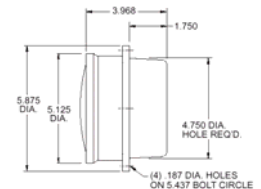
Sealed beam flood lamp features par 36 sealed beam bulb retained by EPDM retaining ring. Retaining ring uses a molded in o-ring which is received by the groove in housing for a secure waterproof assembly. Uses a clear (flood) **BEL4466** sealed beam bulb and **BEL920234** retaining ring. Body must be drilled and tapped for wire entry. Mounting gasket and screws included. Recess mount.



| Part# | Description |
|------------------|---------------------------------------|
| BEL400044 | Clear, Valox body |
| BEL400092 | Clear, Valox body with chassis ground |

Sealed Beam Flood, Spot, and Work Lamp

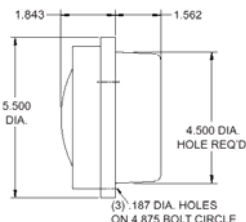
Sealed beam flood lamp features par 36 sealed beam bulb retained by EPDM retaining ring. A new style retaining ring **BEL920071** has the ability to hold the sealed beam bulb plus retaining a **BEL920143** clear shallow polycarbonate lens that protects the bulb from breakage. Uses a clear (flood) **BEL4466** sealed beam bulb and **BEL920071** retaining ring. Body must be drilled and tapped for wire entry. Mounting gasket and screws included. Recess mount.



| Part# | Description |
|------------------|---------------------------------------|
| BEL400072 | Clear, Valox body |
| BEL400094 | Clear, Valox body with chassis ground |

Sealed Beam Flood, Spot, and Work Lamp

Sealed beam flood lamp features par 36 sealed beam bulb retained by EPDM retaining ring. Retaining ring uses a molded in o-ring which is received by the groove in housing for a secure waterproof assembly. Uses a clear (flood) **BEL4466** sealed beam bulb and **BEL920234** retaining ring. Body must be drilled and tapped for wire entry. Mounting gasket and screws included. Recess mount.

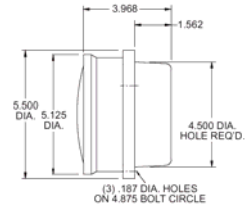


| Part# | Description |
|------------------|----------------------|
| BEL450010 | Clear, aluminum body |
| BEL450033 | Clear, Valox body |

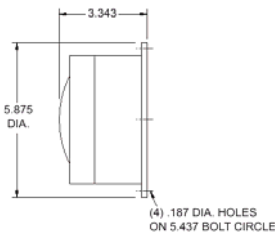


Sealed Beam Flood, Spot, and Work Lamp

Sealed beam flood lamp features par 36 sealed beam bulb retained by PDM retaining ring. A new style retaining ring BEL920071 has the ability to hold the sealed beam bulb plus retaining a BEL920143 clear shallow polycarbonate lens that protects the bulb from breakage. Uses a clear (flood) BEL4466 sealed beam bulb and BEL920071 retaining ring. Body must be drilled and tapped for wire entry. Mounting gasket and screws included. Recess mount. Aluminum bodies to be discontinued.



| Part# | Description |
|------------------|----------------------|
| BEL450062 | Clear, aluminum body |
| BEL450063 | Clear, Valox body |



Sealed Beam Flood, Spot, and Work Lamp

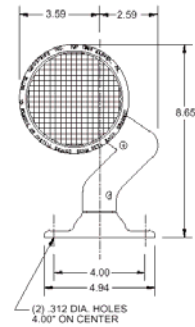
Sealed beam flood lamp features par 36 sealed beam bulb retained by EPDM retaining ring. Retaining ring uses a molded in o-ring which is received by the groove housing for a secure waterproof assembly. Uses a clear (flood) BEL4466 sealed beam bulb and BEL920234 retaining ring. Body must be drilled and tapped for wire entry. Mounting gasket and screws included. Surface mount.



| Part# | Description |
|------------------|-------------------|
| BEL470025 | Clear, Valox body |

Sealed Beam Flood, Spot, and Work Lamp

This par 36 sealed beam lamp features horizontal and vertical rotation on smooth operating neoprene o-rings. Pigtail(s) run directly to the bulb eliminating many contact point problems. Bulb is held by a BEL920234 retaining ring. Uses a clear incandescent (flood) BEL4466 or a clear halogen (spot) H7616 sealed beam bulb. Mounting gasket is included. Provided with (1) 18" BSXL abrasion resistant lead wire for chassis grounding or (2) lead wires for common grounding.



Incandescent Flood with 9(1) Lead Wire

| Part# | Description |
|------------------|--|
| BEL315001 | Clear, aluminum body (Shown) |
| BEL315003 | Clear, aluminum body with 20 amp toggle switch |

Halogen Spot with (1) Lead Wire

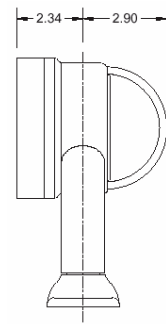
| Part# | Description |
|------------------|--|
| BEL315005 | Clear, aluminum body |
| BEL315007 | Clear, aluminum body with 20 amp toggle switch |

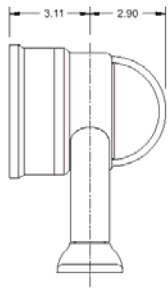
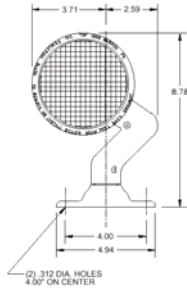
Incandescent Flood with (2) Lead Wires

| Part# | Description |
|------------------|--|
| BEL325001 | Clear, aluminum body |
| BEL325003 | Clear, aluminum body with 20 amp toggle switch |

Halogen Spot with (2) Lead Wires

| Part# | Description |
|------------------|--|
| BEL325005 | Clear, aluminum body |
| BEL325007 | Clear, aluminum body with 20 amp toggle switch |





Sealed Beam Flood, Spot, and Work Lamp

This par 36 sealed beam lamp features full horizontal and vertical rotation on smooth operating neoprene o-rings. Pigtail(s) run directly to the bulb eliminating many contact point problems. **Bulb is held by an extended retaining ring BEL920071 that has the ability to hold the sealed beam bulb plus retain a BEL920143 clear polycarbonate lens that protects the bulb from breakage.** Uses a clear incandescent BEL4466 or clear halogen (spot) H7616 sealed beam bulb. Mounting gasket is included. Provided with an 18" BSXL abrasion resistant lead wire for chassis grounding or (2) lead-wires for common grounding.



Incandescent Flood with 9(1) Lead Wire

| Part# | Description |
|------------------|--|
| BEL315009 | Clear, aluminum body (Shown) |
| BEL315010 | Clear, aluminum body with 20 amp toggle switch |

Halogen Spot with (1) Lead Wire

| Part# | Description |
|------------------|--|
| BEL315011 | Clear, aluminum body |
| BEL315012 | Clear, aluminum body with 20 amp toggle switch |

Incandescent Flood with (2) Lead Wires

| Part# | Description |
|------------------|--|
| BEL325009 | Clear, aluminum body |
| BEL325010 | Clear, aluminum body with 20 amp toggle switch |

Halogen Spot with (2) Lead Wires

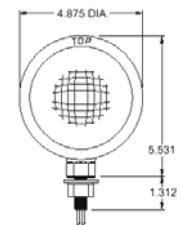
| Part# | Description |
|------------------|--|
| BEL325011 | Clear, aluminum body |
| BEL325012 | Clear, aluminum body with 20 amp toggle switch |



Pedestal Mount Sealed Beam Lamp

Pedestal mount sealed beam lamp has a 9/16" or 13/16" mounting stud. Uses a clear (flood) sealed beam bulb BEL4466 or an amber (fog) with a BEL920234 retaining ring. Mounting hardware is included. Provided with an 18" BSXL abrasion resistant pigtail.

For more information please contact DBL



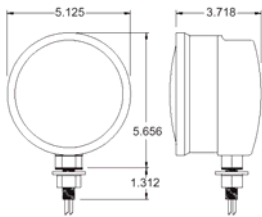
With 13/16" Mounting Stud

| Part# | Description |
|------------------|--|
| BEL800014 | Clear, aluminum body |
| BEL800015 | Amber, aluminum body |
| BEL800018 | Clear, aluminum body with 20 amp toggle switch |

With 9/16" Mounting Stud

| Part# | Description |
|------------------|----------------------|
| BEL800016 | Clear, aluminum body |
| BEL00017 | Amber, aluminum body |





Pedestal Mount Sealed Beam Lamp

Pedestal mount sealed beam lamp has a 9/16" or 13/16" mounting stud. Uses a clear (flood) sealed beam bulb **BEL4466** or an amber (fog) **BEL4415A** with a **BEL920071 extended retaining ring** and shallow, clear lens **BEL920143**. Mounting hardware is included. Provided with an 18" BSXL abrasion resistant pigtail.



With 13/16" Mounting Stud

| Part# | Description |
|------------------|--|
| BEL800019 | Clear, aluminum body |
| BEL800020 | Amber, aluminum body |
| BEL800023 | Clear, aluminum body with 20 amp toggle switch |

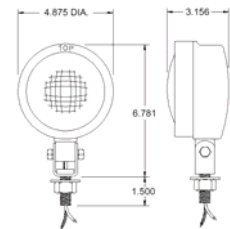
With 9/16" Mounting Stud

| Part# | Description |
|------------------|----------------------|
| BEL800021 | Clear, aluminum body |
| BEL800022 | Amber, aluminum body |



Pedestal Mount Sealed Beam Lamp

A par 36 sealed beam lamp with adjustable pedestal mount and heavy duty 9/16" stud. Uses a **BEL920234** retaining ring and clear (flood) **BEL4466**, amber (fog) **BEL4415A** or a clear halogen (spot) **H7616** sealed beam bulb. Mounting hardware included. Provided with an 18" BSXL abrasion resistant pigtail.

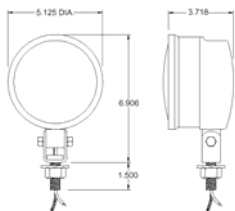


Painted

| Part# | Description |
|------------------|---|
| BEL805001 | Clear, aluminum body |
| BEL805002 | Amber, aluminum body |
| BEL805003 | Clear, aluminum body with 20 amp toggle switch |
| BEL805021 | Halogen, clear, aluminum body |
| BEL805022 | Halogen clear, aluminum body with 20 amp toggle |

Chrome

| Part# | Description |
|------------------|--|
| BEL805009 | Clear, aluminum body |
| BEL805010 | Amber, aluminum body |
| BEL805004 | Clear, aluminum body with 20 amp toggle switch |
| BEL805024 | Halogen, clear, aluminum body |
| BEL805023 | Halogen, clear, aluminum body with 20 amp toggle |



Pedestal Mount Sealed Beam Lamp

A par 36 sealed beam lamp with adjustable pedestal mount and heavy duty 9/16" stud. **A new style retaining ring BEL920071 has the ability to hold the sealed beam plus retain a BEL920143 clear shallow polycarbonate lens that protects the bulb from breakage.** Uses a clear (flood) **BEL4466**, amber (fog) **BEL4415A** or a clear halogen (spot) **H7616** sealed beam bulb. Mounting hardware included. Provided with an 18" BSXL abrasion resistant pigtail.



Painted

| Part# | Description |
|------------------|---|
| BEL805011 | Clear, aluminum body |
| BEL805012 | Amber, aluminum body |
| BEL805013 | Clear, aluminum body with 20 amp toggle switch |
| BEL805025 | Halogen, clear, aluminum body |
| BEL805026 | Halogen clear, aluminum body with 20 amp toggle |

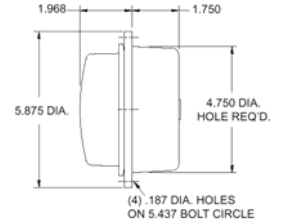
Chrome

| Part# | Description |
|------------------|--|
| BEL805019 | Clear, aluminum body |
| BEL805020 | Amber, aluminum body |
| BEL805016 | Clear, aluminum body with 20 amp toggle switch |
| BEL805027 | Halogen, clear, aluminum body |
| BEL805028 | Halogen, clear, aluminum body with 20 amp toggle |



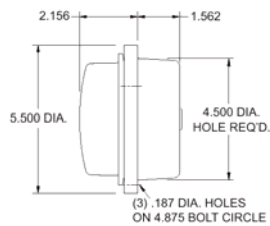
Strobe Recess Mount (Permanent)

Strobe featuring high impact Valox housing and polycarbonate lens. The Xenon flash tube with a life of 10 million flashes produces an (8) joule output per flash. Has a flash rate of 70 flashes per minute and an effective candle power of 102 with clear lens. Consumes 1 amp at 12 volts. Mounting gasket, screws and 8" pigtails included.



| Part# | Description |
|------------------|---------------------------------------|
| BEL400046 | With BEL920140 deep clear lens |
| BEL400047 | With BEL920144 deep red lens |

| Part# | Description |
|------------------|---------------------------------------|
| BEL400048 | With BEL920145 deep amber lens |
| BEL400049 | With BEL920388 deep blue lens |



Strobe Recess Mount (Permanent)

Strobe featuring high impact Valox housing and polycarbonate lens. The Xenon flash tube with a life of 10 million flashes produces an (8) joule output per flash. Has a flash rate of 70 flashes per minute and an effective candle power of 102 with clear lens. Consumes 1 amp at 12 volts. Mounting gasket, screws and 8" pigtails included.



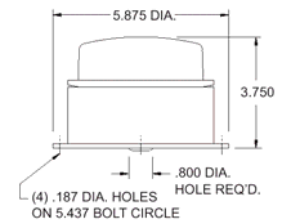
| Part# | Description |
|------------------|---------------------------------------|
| BEL450035 | With BEL920140 deep clear lens |
| BEL450036 | With BEL920144 deep red lens |

| Part# | Description |
|------------------|---------------------------------------|
| BEL450037 | With BEL920145 deep amber lens |
| BEL450038 | With BEL920388 deep blue lens |



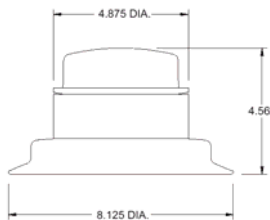
Strobe Surface Mount (Permanent)

Strobe featuring high impact Valox housing and polycarbonate lens. The Xenon flash tube with a life of 10 million flashes produces an (8) joule output per flash. Has a flash rate of 70 flashes per minute and an effective candle power of 102 with clear lens. Consumes 1 amp at 12 volts. Mounting gasket, screws and 8" pigtails included.



| Part# | Description |
|------------------|---------------------------------------|
| BEL470028 | With BEL920140 deep clear lens |
| BEL470029 | With BEL920144 deep red lens |

| Part# | Description |
|------------------|---------------------------------------|
| BEL470030 | With BEL920145 deep amber lens |
| BEL470031 | With BEL920388 deep blue lens |



Strobe Surface Mount (Temporary)

Strobe featuring high impact Valox housing and polycarbonate lens. The Xenon flash tube with a life of 10 million flashes produces an (8) joule output per flash. Has a flash rate of 70 flashes per minute and an effective candle power of 102 with clear lens. Consumes 1 amp at 12 volts. Includes suction gasket, magnet, 8 ft. of wire and cigarette lighter adapter.



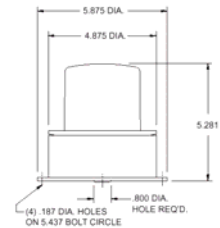
| Part# | Description |
|------------------|---------------------------------------|
| BEL470047 | With BEL920140 deep clear lens |
| BEL470048 | With BEL920144 deep red lens |

| Part# | Description |
|------------------|---------------------------------------|
| BEL470049 | With BEL920145 deep amber lens |
| BEL470050 | With BEL920388 deep blue lens |



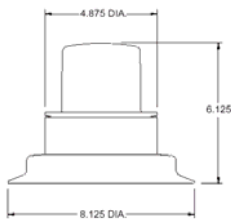
Strobe Roof Mount (Permanent)

Strobe featuring high impact Valox housing and polycarbonate lens. The Xenon flash tube with a life of 10 million flashes produces an (8) joule output per flash. Has a flash rate of 70 flashes per minute and an effective candle power of 102 with clear lens. Consumes 1 amp at 12 volts. Mounting gasket, screws and 8" pigtails included.



| Part# | Description |
|-----------|------------------------------------|
| BEL470032 | With BEL920136 red high hat lens |
| BEL470033 | With BEL920137 amber high hat lens |

| Part# | Description |
|-----------|------------------------------------|
| BEL470034 | With BEL920138 blue high hat lens |
| BEL470065 | With BEL920409 clear high hat lens |



Strobe Roof Mount (Temporary)

Strobe featuring high impact Valox housing and polycarbonate lens. The Xenon flash tube with a life of 10 million flashes produces an (8) joule output per flash. Has a flash rate of 70 flashes per minute and an effective candle power of 102 with clear lens. Consumes 1 amp at 12 volts. Includes suction gasket, magnet, 8 ft. of wire and cigarette lighter adapter.



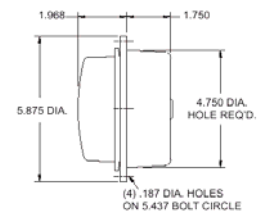
| Part# | Description |
|-----------|------------------------------------|
| BEL470051 | With BEL920136 red high hat lens |
| BEL470052 | With BEL920137 amber high hat lens |

| Part# | Description |
|-----------|------------------------------------|
| BEL470053 | With BEL920138 blue high hat lens |
| BEL470066 | With BEL920409 clear high hat lens |



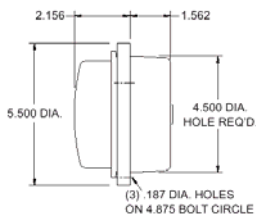
Strobe Recess Mount (Permanent)

Halogen beacons may be used in place of strobes for many applications. Halogen beacons feature a tough Valox housing and polycarbonate deep lens. Simplified circuitry along with good shock resistance insures less maintenance. The Halogen bulb is field replaceable. Mounting gasket, screws and 8" pigtails included.



| Part# | Description |
|-----------|--------------------------------|
| BEL400050 | With BEL920144 deep red lens |
| BEL400051 | With BEL920145 deep amber lens |

| Part# | Description |
|-----------|--------------------------------|
| BEL400052 | With BEL920388 deep blue lens |
| BEL400073 | With BEL920140 deep clear lens |



Strobe Recess Mount (Permanent)

Halogen beacons may be used in place of strobes for many applications. Halogen beacons feature a tough Valox housing and polycarbonate deep lens. Simplified circuitry along with good shock resistance insures less maintenance. The Halogen bulb is field replaceable. Mounting gasket, screws and 8" pigtails included.



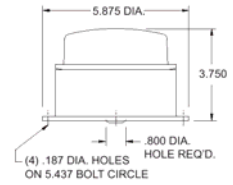
| Part# | Description |
|-----------|--------------------------------|
| BEL450039 | With BEL920144 deep red lens |
| BEL450040 | With BEL920145 deep amber lens |

| Part# | Description |
|-----------|--------------------------------|
| BEL450041 | With BEL920388 deep blue lens |
| BEL450066 | With BEL920140 deep clear lens |



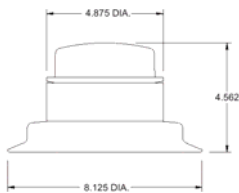
Halogen Surface Mount (Permanent)

Halogen beacons may be used in place of strobes for many applications. Halogen beacons feature tough Valox housing and polycarbonate high hat lens. Simplified circuitry along with good shock resistance insures less maintenance. The Halogen bulb is field replaceable. Mounting gasket, screws and 8" pigtails included.



| Part# | Description |
|------------------|---------------------------------------|
| BEL470035 | With BEL920144 deep red lens |
| BEL470036 | With BEL920145 deep amber lens |

| Part# | Description |
|------------------|---------------------------------------|
| BEL470037 | With BEL920388 deep blue lens |
| BEL470067 | With BEL920140 deep clear lens |



Halogen Surface Mount (Temporary)

Halogen beacons may be used in place of strobes for many applications. Halogen beacons feature a tough Valox housing and polycarbonate high hat lens. Simplified circuitry along with good shock resistance insures less maintenance. The Halogen bulb is field replaceable. Includes suction gasket, magnet, 8 ft. of wire and cigarette lighter adaptor.



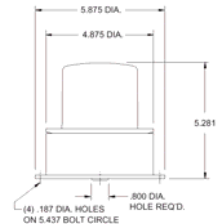
| Part# | Description |
|------------------|---------------------------------------|
| BEL470054 | With BEL920144 deep red lens |
| BEL470055 | With BEL920145 deep amber lens |

| Part# | Description |
|------------------|---------------------------------------|
| BEL470056 | With BEL920388 deep blue lens |
| BEL470068 | With BEL920140 deep clear lens |



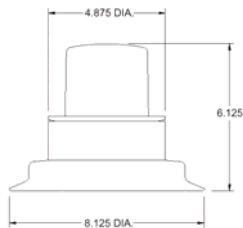
Halogen Roof Mount (Permanent)

Halogen beacons may be used in place of strobes for many applications. Halogen beacons feature a tough Valox housing and polycarbonate deep lens. Simplified circuitry along with good shock resistance insures less maintenance. The Halogen bulb is field replaceable. Mounting gasket, screws and 8" pigtails included.



| Part# | Description |
|------------------|---|
| BEL470038 | With BEL920136 red high hat lens |
| BEL470039 | With BEL920137 amber high hat lens |

| Part# | Description |
|------------------|---|
| BEL470040 | With BEL920138 blue high hat lens |
| BEL470069 | With BEL920409 clear high hat lens |



Halogen Roof Mount (Temporary)

Halogen beacons may be used in place of strobes for many applications. Halogen beacons feature a tough Valox housing and polycarbonate high hat lens. Simplified circuitry along with good shock resistance insures less maintenance. The Halogen bulb is field replaceable. Includes suction gasket, magnet, 8 ft. of wire and cigarette lighter adaptor.



| Part# | Description |
|------------------|---|
| BEL470057 | With BEL920136 red high hat lens |
| BEL470058 | With BEL920137 amber high hat lens |

| Part# | Description |
|------------------|---|
| BEL470059 | With BEL920138 blue high hat lens |
| BEL470070 | With BEL920409 clear high hat lens |



LED Lens Inserts For 200 Series Aluminum Lamps

Used in Betts low profile, aluminum body surface mount lamps that can be mounted horizontally or vertically. Features (4) light emitting diodes (LED's) in an epoxy sealed polycarbonate lens assembly.

For more information please contact DBL

| Part# | Description |
|------------------|---|
| BEL201201 | Red, LED lens insert with (1) eyelet & (1) butt connector |
| BEL201202 | Amber, LED lens insert with (1) eyelet & (1) butt connector |

| Part# | Description |
|------------------|--|
| BEL201203 | Red, LED lens insert with (2) butt connectors. |
| BEL201204 | Amber, LED lens insert with (2) butt connectors. |

LED Lens Inserts For 200 Series Valox Lamps

Used in Betts Valox body surface mount lamps that can be mounted horizontally or vertically. Features (6) light emitting diodes (LED's) in an epoxy sealed REFLEX polycarbonate lens assembly.



| Part# | Description |
|------------------|--|
| BEL221201 | Red, LED REFLEX lens insert with (2) eyelets |
| BEL221202 | Amber, LED REFLEX lens insert with (2) eyelets |

LED S.C. Lens Inserts For 50, 56, 57, & 60 Series Aluminum Lamps

Used in Betts aluminum body surface and recessed mount lamps. Single contact lens features (4) light emitting diodes (LED's) in an epoxy sealed lens assembly. Available in both shallow and deep lenses.



| Part# | Description |
|------------------|---|
| BEL510003 | Red, shallow LED lens insert with (2) butt connectors |
| BEL510004 | Amber, shallow LED lens insert with (2) butt connectors |
| BEL510005 | Red, shallow LED lens insert with (1) eyelet & (1) butt connector |
| BEL510006 | Amber, shallow LED lens insert with (1) eyelet & (1) butt connector |
| BEL510007 | Red, shallow LED lens insert with S.C. bulb base |
| BEL510008 | Amber, shallow LED lens insert with S.C. bulb base |

| Part# | Description |
|------------------|--|
| BEL510013 | Red, deep LED lens insert with (2) butt connectors |
| BEL510014 | Amber, deep LED lens insert with (2) butt connectors |
| BEL510015 | Red, deep LED lens insert with (1) eyelet & (1) butt connector |
| BEL510016 | Amber, deep LED lens insert with (1) eyelet & (1) butt connector |
| BEL510017 | Red, deep LED lens insert with S.C. bulb base |
| BEL510018 | Amber, deep LED lens insert with S.C. bulb base |



LED S.C. Lens Inserts For 56 Series Valox Lamps

Used in Betts Valox body recessed mount lamps. Single contact lens features (4) light emitting diodes (LED's) in an epoxy sealed lens assembly. Available in both shallow and deep lenses.

| Part# | Description |
|------------------|---|
| BEL510001 | Red, shallow LED lens insert with (2) eyelets |
| BEL510002 | Amber, shallow LED lens insert with (2) eyelets |

| Part# | Description |
|------------------|--|
| BEL510011 | Red, deep LED lens insert with (2) eyelets |
| BEL510012 | Amber, deep LED lens insert with (2) eyelets |

LED Special Purpose D.C. Lens Inserts For 50, 56, 57, & 60 Series Aluminum Lamps

Used in Betts aluminum body surface and recessed mount lamps. Double contact lens. It features a double contact lens with (4) light emitting diodes (LED's) on low power that increases to 12 LED's on high power in an epoxy sealed lens assembly. Available in both shallow and deep lenses.



| Part# | Description |
|------------------|--|
| BEL510023 | Red, shallow LED lens insert with (3) butt connectors. |
| BEL510024 | Amber, shallow LED lens insert with (3) butt connectors |
| BEL510025 | Red, shallow LED lens insert with (1) eyelet & (2) butt connectors |
| BEL510026 | Amber, shallow LED lens insert with (1) eyelet & (2) butt connectors |
| BEL510027 | Red, shallow LED lens insert with D.C. bulb base |
| BEL510028 | Amber, shallow LED lens insert with D.C. bulb base |

| Part# | Description |
|------------------|---|
| BEL510033 | Red, deep LED lens insert with (3) butt connectors. |
| BEL510034 | Amber, deep LED lens insert with (3) butt connectors |
| BEL510035 | Red, deep LED lens insert with (1) eyelet & (2) butt connectors |
| BEL510036 | Amber, deep LED lens insert with (1) eyelet & (2) butt connectors |
| BEL510037 | Red, deep LED lens insert with D.C. bulb base |
| BEL510038 | Amber, deep LED lens insert with D.C. bulb base |

LED Special Purpose D.C. Lens Inserts For 56 Series Valox Lamps

Used in Betts Valox body recessed mount lamps. Double contact lens. It features a double contact lens with (4) light emitting diodes (LED's) on low power that increases to 12 LED's on high power in an epoxy sealed lens assembly. Available in both shallow and deep lenses.



| Part# | Description |
|------------------|---|
| BEL510021 | Red, shallow LED lens insert with (3) eyelets |
| BEL510022 | Amber, shallow LED lens insert with (3) eyelets |

| Part# | Description |
|------------------|--|
| BEL510031 | Red, deep LED lens insert with (3) eyelets |
| BEL510032 | Amber, deep LED lens insert with (3) eyelets |

**LED Lens Inserts For 40, 45, 47 and 70 Series
Aluminum Lamps**

Used in Betts aluminum body surface and recessed mount lamps. Double contact polycarbonate lens assembly features (60) light emitting diodes (LED's) on low power to provide tail or marker function that increase to high power output for stop or turn functions. Available in both shallow and deep lenses for 12 or 24 volt applications.



| Part# | Description |
|------------------|---|
| BEL710003 | Red, shallow LED lens insert with (1) eyelet & (2) butt connectors |
| BEL710004 | Amber, shallow LED lens insert with (1) eyelet & (2) butt connectors |
| BEL710007 | Red, shallow LED lens insert with (1) eyelet & (2) butt connectors, 24 volt |
| BEL710008 | Amber, shallow LED lens insert with (1) eyelet & (2) butt connectors, 24 volt |
| BEL710009 | Red, shallow LED lens insert with D.C. bulb base |
| BEL710010 | Amber, shallow LED lens insert with D.C. bulb base |

| Part# | Description |
|------------------|--|
| BEL710013 | Red, deep LED lens insert with (1) eyelet & (2) butt connectors |
| BEL710014 | Amber, deep LED lens insert with (1) eyelet & (2) butt connectors |
| BEL710017 | Red, deep LED lens insert with (1) eyelet & (2) butt connectors, 24 volt |
| BEL710018 | Amber, deep LED lens insert with (1) eyelet & (2) butt connectors. 24 volt |
| BEL710019 | Red, deep LED lens insert with D.C. bulb base, 24 volt |
| BEL710020 | Amber, deep LED lens insert with D.C. bulb base, 24 volt |

**LED Lens Inserts For 40, 45, and 47
Series Valox Lamps**

Used in Betts Valox body surface and recessed mount lamps. Double contact polycarbonate lens assembly features (60) light emitting diodes (LED's) on low power to provide tail or marker function that increase to high power output for stop or turn functions. Available in both shallow and deep lenses for 12 or 24 volt applications.



| Part# | Description |
|------------------|--|
| BEL710001 | Red, shallow LED lens insert with (3) eyelets |
| BEL710002 | Amber, shallow LED lens insert with (3) eyelets |
| BEL710005 | Red, shallow LED lens insert with (3) eyelets, 24 volt |
| BEL710006 | Amber, shallow LED lens insert with (3) eyelets, 24 volt |

| Part# | Description |
|------------------|---|
| BEL710011 | Red, deep LED lens insert with (3) eyelets |
| BEL710012 | Amber, deep LED lens insert (3) eyelets |
| BEL710015 | Red, deep LED lens insert with (3) eyelets. 24 volt |
| BEL710016 | Amber, deep LED lens insert with (3) eyelets, 24 volt |

| | | |
|---|---|---|
|  <p><u>20 Series</u> Red, amber, silver license, and clear</p> |  <p><u>40, 45, 47, 70 & 80 Series</u> Clear shallow, red shallow, or amber shallow</p> |  <p><u>200 Series</u> Red. Clear, or amber</p> |
|  <p><u>50, 56, 57, 60 & 100 Series</u> Red shallow or amber shallow</p> |  <p><u>BEL920139</u> Clear, shallow back-up</p> |  <p><u>200V Series</u> Clear, red, or amber</p> |
|  <p><u>BEL920115</u> Clear, shallow</p> |  <p><u>BEL920142</u> Smoked, shallow</p> <p><u>BEL920143</u> Clear, shallow</p> |  <p><u>73 Series</u> Red, amber, and back-up</p> |
|  <p><u>BEL920115</u> Clear, deep back-up</p> |  <p><u>BEL920141</u> Red, deep license</p> |  <p><u>77 Series</u> Clear, red, or amber</p> |
|  <p><u>BEL920113</u> Red, deep license</p> <p><u>BEL920114</u> Amber, deep with window</p> |  <p><u>BEL920144</u> Red, deep</p> <p><u>BEL920145</u> Amber, deep</p> <p><u>BEL920388</u> Blue, deep</p> <p><u>BEL920140</u> Clear, deep dome</p> |  <p><u>BEL920154</u> Red emergency, Warning</p> <p><u>BEL920155</u> Amber emergency, warning</p> |
|  <p><u>BEL920111</u> Clear, red</p> <p><u>BEL920116</u> Red, deep</p> <p><u>BEL920117</u> Amber, deep</p> <p><u>BEL920451</u> Blue, deep</p> |  <p><u>47 Series Strobe and Beacon</u> High hat roof mounts available in red, amber, blue, or clear</p> |  <p><u>BEL920156</u> Red, arrow turn</p> <p><u>BEL920157</u> Amber, arrow turn</p> |
|  <p><u>65 Series</u> Clear, red or amber</p> | <p><i>For additional information please contact DBL</i></p> | |

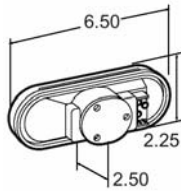
Trucklite

DBL stocks a wide variety of Trucklite gear and is adding more as our customers' needs grow and change. Listed are many of our most popular items among our customers. If you do not see what you need give us a call and we can get it for you.

Stop/Turn/Tail & Front/Park/Turn Oval Sealed

Part# **TKL60202R**—12v lamp (red)

The Super 60 oval sealed lamp features sonically sealed lens and housing with a high impact polycarbonate lens.



Stop/Turn/Tail & Front/Park/Turn 4" Sealed Lamp

Part# **TKL40202R** (Red S/T/T)
Part# **TKL40202Y** (Yellow F/P/T)

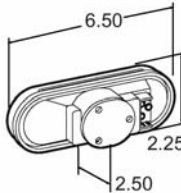
Made with a polycarbonate lens that resists heat and impact and designed with a shock mount that extends lamp life. Made for mounting in a 4-1/2" hole.



Side Turn & Marker/Clearance

Part# **TKL60215Y** (Yellow)

Features side indicator, marker/clearance and reflector functions as-well-as heavy duty shock mounted bulb. Narrow width facilitates horizontal mounting. Uses standard mounting holes.

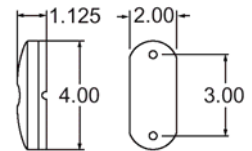


Shock/Mount Clearance Marker

Part# **TKL1211R** (Red)

Part# **TKL1211Y** (Yellow)

High impact Permastat housing protects against rust and corrosion, two bulb design allows one bulb to remain lit if other burns out and lamp meets requirements with one bulb.



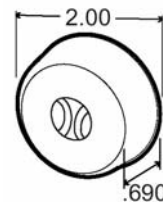
2" Sealed Marker Lamp

Part# **TKL30200R** (Red)

Part# **TKL30200Y** (Yellow)

Part# **TKL30230Y** (Yellow with ABS logo)

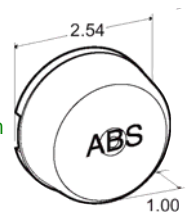
Featuring a polycarbonate lens and housing and a 12 volt bulb with a bulb life rated at 15,000 hours.



2-1/2" Sealed ABS Lamp

Part# **TKL10212Y** (Yellow)

Unique shock mount extends bulb life, polycarbonate lens and housing, 15,000 hour bulb life, and meets PC requirements on a 45° angle using all mounting devices.

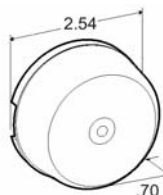


2-1/2" Sealed Reflectorized Clearance Lamp

Part# **TKL10205R** (Red)

Part# **TKL10205Y** (Yellow)

Sonically sealed lens and housing, high impact polycarbonate construction, and a 12 volt 15,000 hour rated bulb life.

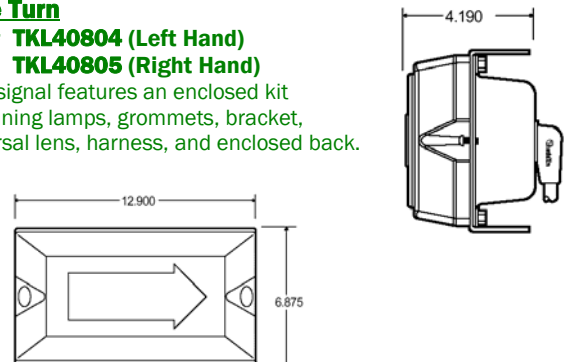


Wide Turn

Part# **TKL40804** (Left Hand)

Part# **TKL40805** (Right Hand)

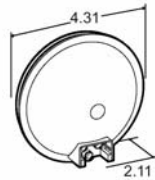
Each signal features an enclosed kit containing lamps, grommets, bracket, universal lens, harness, and enclosed back.



4" Sealed Back-Up Lamp

Part# TKL40204

Polycarbonate lens and housing, 12v lamp, legal only for back-up function, not recommended for cabinet use.



4" Sealed Dome Lamp

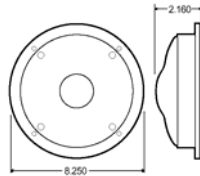
Part# TKL40203

Clear polycarbonate lens and housing are vibration welded, bulb is shock-mounted for extended life, and ABS flange.

8" Dome Lamp

Part# TKL80354 (with switch)

Push style on/off switch, chrome-plate steel housing, lens attaches to housing with four screws, uses flanged mounting to mount to a flat surface.

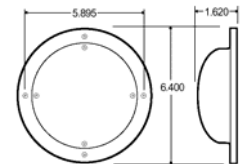


6" Dome Lamp

Part# TKL80351

Part# TKL80350 (with switch)

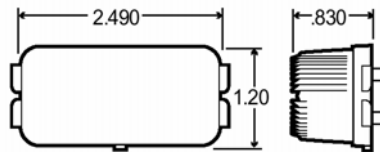
Clear polycarbonate lens, steel housing, and replaceable bulb. Screw hole diameter .234 and bolt hole diameter 5.895



Rectangular Sealed License Lamp

Part# TKL15208

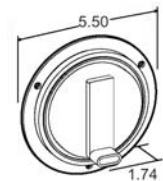
High impact polycarbonate sonically sealed lens and housing with 15,000 hour long life 12v bulb.



LED 4" Sealed Stop/Turn/Tail

Part# TKL44322R3 (Red)

Designed for less current draw, resulting in increased battery and alternator life while allowing more power for other vehicle requirements. Extremely shock and vibration resistant.

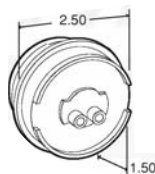


2" LED Marker/Clearance Lamp

Part# TKL30275R (Red)

Part# TKL30275Y (Yellow)

Polycarbonate lens and housing, eight LED pattern, and SAE PC rated for combination clearance/marker applications.

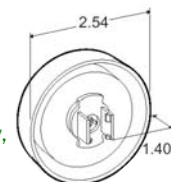


2-1/2" LED Sealed Marker/Clearance Lamp

Part# TKL10250R (Red)

Part# TKL10250Y (Yellow)

Polycarbonate lens and housing, 2 LED display, and electronics completely sealed in epoxy to resist corrosion.



2-1/2" LED Sealed Marker/Clearance Lamp Kit

Part# TKL10279R (Red)

Part# TKL10279Y (Yellow)

Polycarbonate lens and housing, eight LED pattern, and SAE PC rated for combination clearance/marker applications. Includes lamp and gray flange.

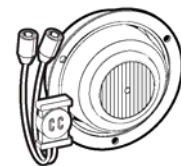


2-1/2" LED Sealed Marker/Clearance Lamp

Part# TKL10051R (Red)

Part# TKL10051Y (Yellow)

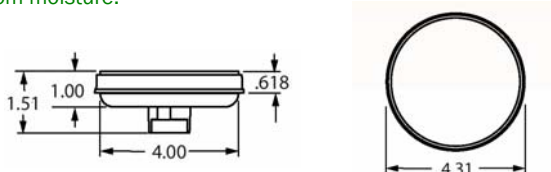
Polycarbonate lens and housing, 2 LED display, and electronics completely sealed in epoxy to resist corrosion. Includes lamp, flange, and plug.



LED 4" Stop/Turn/Tail LED Lamp

Part# TKL4050

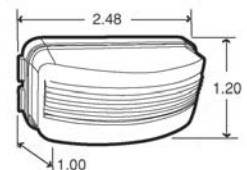
Popular on owner/operator show trucks, uses standard right angle connection, a unique 24 LED array displays a full pattern of light, and epoxy encapsulated electronics prevent damage from moisture.



LED Sealed License and Utility Lamp

Part# TKL15205

Hard-wired design with adaptor plug for quick changeover without rewiring, meets SAE J587 and European ECE Reg. 4. Lamp designed to fit brackets TKL00820, TKL15729, TKL15730, or TKL15732.



4" LED Back-Up Lamp

Part# TKL44236C

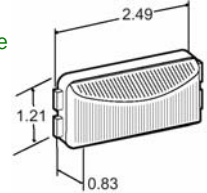
Permanently affixed gray flange mount, 27 LED display evenly distributes light for full and powerful light illumination.



LED Rectangular Sealed Marker/Clearance Lamp

Part# TKL15200R (Red, 12v)

Polycarbonate lens and housing, 16 gauge wire, fits in most narrow header rails, snap-lock tabs allow easy installation, long-life 15,000 hour bulb.

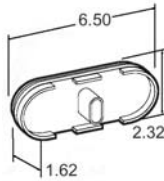


LED Oval Sealed Auxillary/Turn Lamp

Part# TKL60275Y (Yellow)

Part# TKL60080Y (Yellow/Directional)

Polycarbonate lens and housing, 26 LED display, and is a two function lamp. Electronics completely sealed in epoxy to resist corrosion.

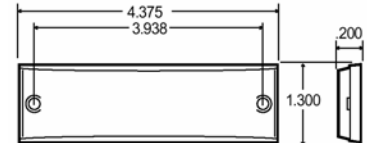


Compact Rectangular Lens

Part# 98003R (Red)

Part# 98003Y (Yellow)

Features acrylic lens and mounts with adhesive back or screws.

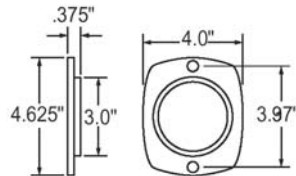


Trucklite 3" Screw Mount Reflectors

Part# 41R (Red)

Part# 41A (Yellow)

Flush type mount reflector and protective guard made of aluminum.

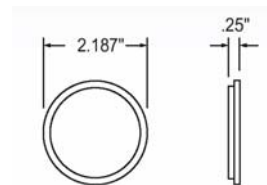


2-3/16" Round Stick-On

Part# 45R (Red)

Part# 45A (Yellow)

Acrylic lens and housing, permanent adhesive backing, mounts on any clean surface, smaller diameter for applications where space is limited.

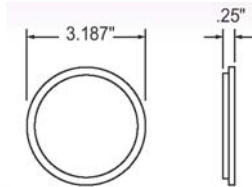


3-3/16" Round Stick-On

Part# 47R (Red)

Part# 47A (Yellow)

Acrylic lens and housing, permanent adhesive backing, mounts on any clean surface.

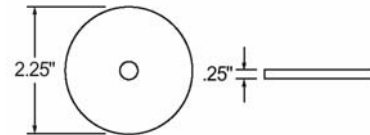


3" Center Mount Reflectors

Part# 98006R (Red)

Part# 98006Y (Yellow)

Fast, permanent installation with nail, screw or rivet. Designed to extra force in center (1/4" hole).



Turcklite Wide Turn Lens

Part# TKL99152

Features large outer lens for greater visibility. Contains two sealed back-up lamps with grommets for improved performance. Includes slotted bracket for ease of installation & adjustment.

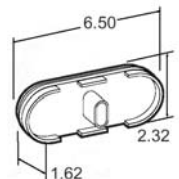


LED Oval Sealed Auxillary/Turn Lamp

Part# TKL60275Y (Yellow)

Part# TKL60080Y (Yellow/Directional)

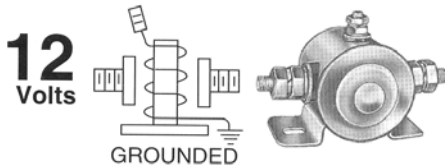
Polycarbonate lens and housing, 26 LED display, and is a two function lamp. Electronics completely sealed in epoxy to resist corrosion.



Cole-Hersee Metal Solenoid

Part# **ELE24106**

Steel housing, bracket mounting holes 5/16" x 19/32", 2-13/64" centers, 85 amps, and continuous duty.

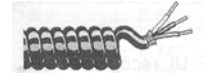


14-3 Coll Cord

These tangle resistant black cords coil up to stay out of your way. Conductors are stranded copper with color-coded rubber insulation.

Part# **ELE14-3CC**

Part# **ELE14-3SET** (with Hubble Set)



16-3 Coll Cord

Part# **ELE16-3CC**

110 Volt Double Pole Electric Switch

Part# **ELESWITCHDP**

Mounts in waterproof box on top of trailer for remote control pumping operations.



Betts Toggle Switch with Boot

Part# **BEL920039** (w/terminal screw)

Part# **BEL920078** (w/pigtails)



Chelsea Sensing Switch

Part# **ELE329202X** (One Wire)

Part# **ELE378301**

One and two wire pressure switches to operate indicator light on air shift PTO operations.



Cole-Hersee Master Switch

Part# **ELE2484**

Two 3/8" -20 copper stud, actuator is die cast, plated steel case, and fits panel up through 3/16".



Toggle Switches

Part# **ELE55021**

Single pole, double throw, momentary on/off toggle switch. Available in several different styles.



70 Amp Auto Reset Breaker

Part# **ELECDLA**

Black, polycarbonate body circuit breaker with two mounting ears, automatically resets itself once tripped.



Standard Circuit Breakers & Fuses

Part# **ELECB15**.....15 Amp Circuit Breaker

Part# **ELECB20**.....20 Amp Circuit Breaker

Part# **ELEMCB**.....12v DC Circuit Breakers

Part# **ELEMFU**.....12v DC Fuse

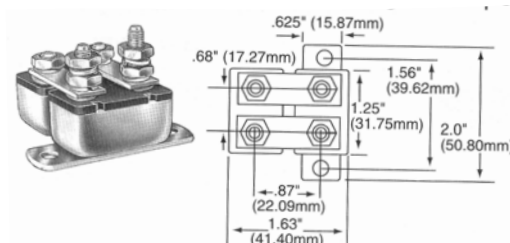
DBL stocks a complete line of fuses and circuit breakers needed for any truck or trailer electrical system.



Cole-Hersee Circuit Breaker

Part# **ELE3088-66**

Double breaker assemblies for higher amperage. Other circuit breakers available upon request.



**70 Amp and 50 AMP Manual
Reset Breaker**

Part# ELECDLM

Black, polycarbonate body circuit breaker with two mounting ears and manual reset button.



Midland Junction Box

Part# ELEBE22040

Black polycarbonate box with brass connecting posts.



Trucklite Junction Box Kit

Part# TKL50400 (surface Mount Assembly)

Part# TKL50401 (Back plate Mount Assembly)

Contains junction box, junction box cap, terminal block, four filler plugs and mounting, and assembly screws.



Trucklite Junction Box Parts

Part# TKL50800.....Junction Box

Part# TKL50808.....Seven Prong
Cover Kit

Part# TKL50816.....Junction Box Cap

Part# TKL50820.....Terminal Block

Part# TKL50830.....Filler Plugs and
Mounting Screws

Part# TKL50831.....Adaptor Plate



DBL stocks a complete line of junction boxes and accessories for remote control operations on trucks and tankers.

Electric Box

Part# ELE2X4BOX.....2"x4" Electric Box

Part# ELE2X4COVER.....2"x4" Cover

Part# ELESWITCHCOVER.....2"x4" Switch Cover



Trailer Nose Box with Breaker

Part# ELEBE26103

Standard trailer nose box with one seven prong receptacle and space for second unit complete with emergency and supply gladhands.



Conduit Boxes

Part# ELECBL-3/4.....3/4" L Conduit Box

Part# ELECBT-1/2.....1/2" T Conduit Box

DBL stocks a complete line of conduit boxes used in tank and trailer applications.



Compression Fittings & Nuts

Part# TKL50840.....3/8" Compression Fitting

Part# TKL50841.....1/2" Compression Fitting

Part# TKL50842.....3/4" Compression Fitting

Part# TKL50845.....Jam Nut



Have a question? Call DBL and one of our knowledgeable staff will help answer any question you might have regarding lights and electrical systems.

Electrical & Wiring

| Part Number | ITEM |
|----------------------|--|
| BEL920013 | Betts 108LS Double Contact Socket |
| BEL920015 | Betts 108S Single Contact Socket |
| BEL920459 | Betts Double Contact Shock Mount Socket |
| BEL820460 | Betts Single Contact Shock Mount Socket |
| BEL920120 | Betts Single Contact |
| BEL920124 | Betts Single Contact Pigtail |
| BEL920125 | Betts Single Contact Socket |
| BEL920148 | Betts Double Contact |
| BEL920147 | Betts Double Contact Pigtail |
| BEL920126 | Betts Double Contact Socket |
| BEL920149 | Betts Double Contact Grommet |
| BEL920307 | Betts Shank Nipple |
| ELEBC | Butt Connector #8 and smaller |
| ELEBL | Battery Lug 1/0 + |
| ELECABLE1-0 | Battery Cable |
| ELECABLE14-6 | Six Wire Cable |
| ELECABLE16-3 | Three wire cable |
| ELECABLE4 | #4 Battery Cable |
| ELEHBLSET | Hubbell Plug and Connector Set |
| ELERT | Ring Terminal #8 and Smaller |
| ELEWIRE12 | 12 Gauge Electrical Wire |
| ELEWIRE14 | 14 Gauge Electrical Wire |
| MISACLIP10 | 5/8" Aluminum Clip |
| MISACLIP6 | 3/8" Aluminum Clip |
| MISACLIP8 | 1/2" Aluminum Clip |
| MISSLOOM | Shrink Plastic Loom Per Inch |
| MISSTUBE | Shrink Tube Per Inch |
| OFM18-7 | 7 Wire 18 Gauge Cable |
| TKL50202 | Right Hand Stop/Turn/Tail Harness 156" |
| TKL50203 | Left Hand Stop/Turn/Tail Harness 156" |
| TKL50208 | Right Hand S/T/T and Side Marker Harness 96" |
| TKL50209 | Left Hand S/T/T and Side Marker Harness 96" |
| TKL50210 | Right Hand S/T/T and Side Marker Harness 192" |
| TKL50242 | Right Hand S/T/T and Rear Marker Harness 96" |
| TKL50243 | Left Hand S/T/T and Rear Marker Harness 96" |
| TKL50250 | Left Hand S/S/T and Back-Up Harness 144" |
| TKL50251 | Right Hand S/S/T and Back-Up Harness 144" |
| TKL50309 | Two Plug Marker/Clearance Harness (brown/white) 168" |
| TKL50310 | Single Plug Marker/Clearance Harness (black/white) 336" |
| TKL50342-0096 | Right Hand Turn/Marker Harness (white/green/brown) 180" |
| TKL50343-0096 | Left Hand Turn/Marker Harness (white/yellow/brown) 180" |
| TKL50344-0360 | Right Hand Turn/Marker Harness (white/green/brown) 456" |
| TKL50345-0360 | Left Hand Turn/Marker Harness (white/yellow/brown) 456" |
| TKL50376-0120 | LED Single Plug Marker/Clearance Harness (Black/White) 336" |
| TKL93745 | LED Fit 'N Forget Adaptor |
| ELEABSE24 | ABS 24" Sensor Extension Cable |
| ELEABSE78 | 2 M. ABS Extension Cable |
| ELEABSPC | ECU Power Cable |
| BEL920123 | Betts Double Contact Shock Mount Socket |
| BEL920234 | Betts Single Contact Shock Mount Socket |

Wire Clips

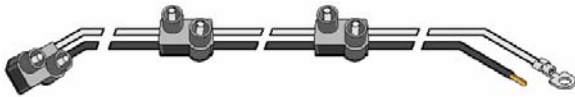
| | |
|-------------------------|---|
| MISSCLIP4 | 1/4" Stainless Steel Wire Clip |
| MISSCLIP6 | 3/8" Stainless Steel Wire Clip |
| MISSCLIP8 | 1/2" Stainless Steel Wire Clip |
| MISSCLIP10 | 5/8" Stainless Steel Wire Clip |
| MISSCLIP12 | 3/4" Stainless Steel Wire Clip |
| MISSCLIP16 | 1" Stainless Steel Wire Clip |
| MISSCLIP24 | 1-1/2" Stainless Steel Wire Clip |
| MISSCLIP28 | 1-3/4" Stainless Steel Wire Clip |

Identification Harness

Part# TKL93906 (6" Center)

Part# TKL93908 (9" Center)

For use with incandescent lamp ID bar, GPT wire, and tin plated brass terminals, six inch centers, overall length 26".



LED Fit 'N Forget S/T/T Adaptor Plug

Part# TKL94706 (8")

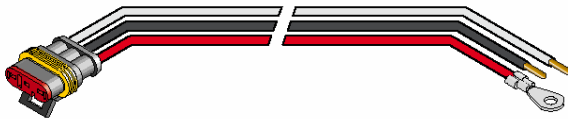
Keeps water, salt, and other corrosives from LED lamps, made of 16 gauge GPT wire, tin plated brass terminals, 8" in length.



LED Fit 'N Forget S/T/T Plug

Part# TKL94707 (8")

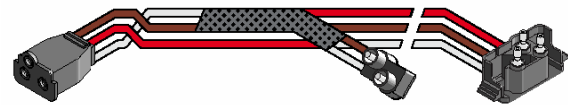
Keeps water, salt, and other corrosives from LED lamps, made of 16 gauge GPT wire, tin plated brass terminals, 8" in length.



Right Angle S/T/T Plugs with Adapter

Part# TKL94751

Converts one S/T/T plug into one S/T/T plug and one marker clearance plug. Made of 16 Gauge GPT wire, 12" in length.



LED Fit 'N Forget Pigtail Set

Part# TKL94862

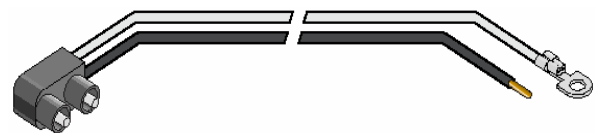
Keeps water, salt, and other corrosives from LED lamps, made of 16 gauge GPT wire, and tin plated brass bullets and receptacles, approximately 5" in length.



Marker Clearance Plugs

Part# TKL94902

For use in areas with limited space, made of 16 gauge GPT wire, tin plated brass terminals, approximately 7" in length.



Marker Clearance Plugs

Part# TKL94916

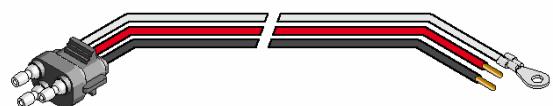
For use in areas with limited space, made of 16 gauge GPT wire, tin plated brass terminals, approximately 19" in length.



S/T/T Plugs

Part# TKL94926

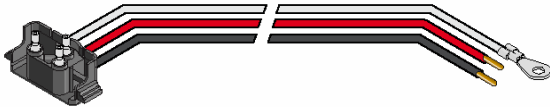
For use with double contact sealed incandescent lamps, made of 16 gauge GPT wire, tin plated brass terminals, 11" in length.



Right Angle S/T/T Plug

Part# **TKL94993**

For use with double contact sealed incandescent lamps, made of 16 gauge GPT wire, tin plated brass terminals, approximately 11" in length.



Marker/Clearance Multiple Plug Harness

Part# **TKL95451**

For use with bumpers and skirts, made of 16 gauge GPT wire, tin plated brass terminals, 7 plugs with 10" centers, overall length of 107"



Marker/Clearance Multiple Plug Harness

Part# **TKL95452**

For use with bumpers and skirts, made of 16 gauge GPT wire, tin plated brass terminals, 9 plugs with 10" centers, overall length of 127".



LED Fit 'N Forget Marker/Clearance Plug Harness

Part# **TKL95461**

For use with bumpers and skirt, made of 16 GPT wire, brass terminals, keeps out water, salt and other corrosives, 7 plugs with 10" centers, overall 107".



Phillips Seven Prong Receptacle and Plug

Part# **ELE15720**.....7 Prong Receptacle

Part# **ELE15730**.....7 Prong Plug

Part# **ELE15760**.....Receptacle Cover



Electrical Receptacles and Plugs

DBL stocks a complete line of single and multiple plug and receptacles to meet your needs

Part# **ELE15-400**.....4 Prong Receptacle

Part# **ELE15-430**.....4 Prong Plug



Phillips Six Prong Receptacle

Part# **ELE15610**

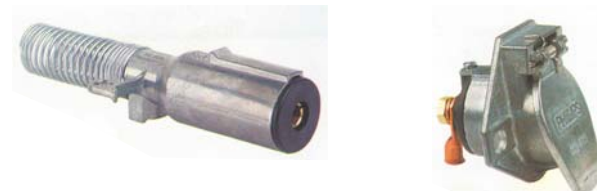
Heavy duty die cast connector exchanges with all popular types of 6-way sockets. Screw tightened guillotine supports cable and allows for quicker installation.



Single Pole Receptacle and Plug

Part# **ELE15320**.....Single Pole Receptacle

Part# **ELE15335**.....Single Pole Plug



Twist-Lock Connector & Plug

Part# **ELEHBL7314C**.....Twist-Lock Connector

Part# **ELEHBL9965C**.....Twist-Lock Plug

Two 20 volt three prong connector and plugs for farm pick-up operations.



Connector Set for 1/0+ Cable

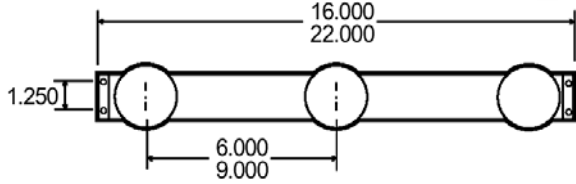
Part# **ELECONNSET**

Tweco twist lock connector set for 1/0+ or larger cable.



Trucklite Stainless Steel I.D. Bar

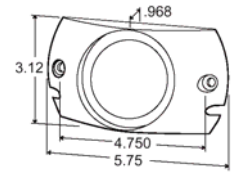
Features rugged stainless steel or black enameled ID bar. Lamps are mounted on 6" or 9" centers.



Branch Deflector Mounts

Part# TKL10725

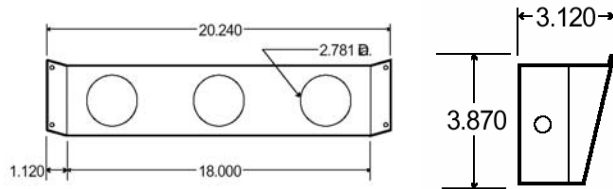
For 2-1/2" lamps, polycarbonate mount, high impact.



Trucklite Identification Bracket for 2-1/2" Lamps

Part# TKL10732

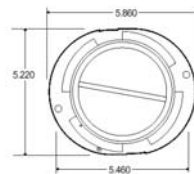
Stainless Steel bracket is angle cut to fit most tanker applications. Designed for mounting grommets requiring 2.871" hole.



Document Holder

Part# TKL97960

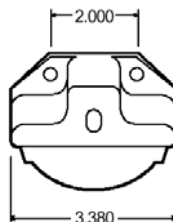
"ABS" plastic base, polycarbonate cover, designed for easy installation, convenient ease and removal of documents, moisture resistant.



Trucklite License Bracket

Part# TKL15729

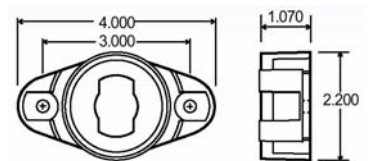
Features snap-fit mount for quick installation and easy replacement, may be surface mounted or used with bracket.



Cam-On Mounts

Part# TKL10728

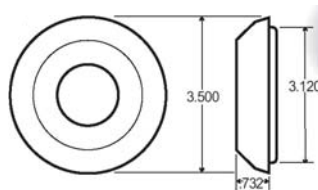
High impact plastic mount, branch deflector cams on 2" and 2-1/2" lamps, requires TKL94924 side entry plug.



Trucklite Diaphragm Grommet for 2-1/2" Lamps

Part# TKL10708

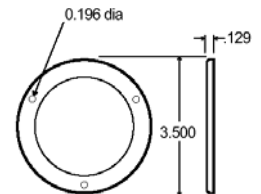
Rubber grommet, designed for edge lighting, adapts to surface thickness up to 1/4".



Trucklite 2-1/2" Mounting Cover

Part# TKL10715

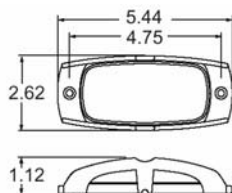
Designed to enhance appearance of lamps, flange cover offers improved theft resistance, polished stainless steel.



Trucklite Chrome Guard Safeguard

Part# TKL26720

Chrome plated die cast steel with mounting holes, used for lamp protection.



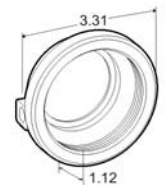
Trucklite Grommet Mounts for 2-1/2" Lamps

Part# TKL10700 (Open Back)

Part# TKL10702 (Closed Back)

Part# TKL10401 (Kit)

PVC grommet, thermal plastic rubber, wide grooved for panel thickness up to .250" Kit includes open back grommet and plug.



Trucklite Grommet Mounts for 2-1/2" Lamps

Parts# **TKL30700** (Open Back)

Parts# **TKL30702** (Closed Back)

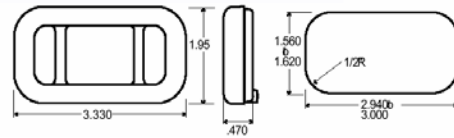
For additional information please contact DBL.



Trucklite Grommet Mount

Part# **TKL15702**

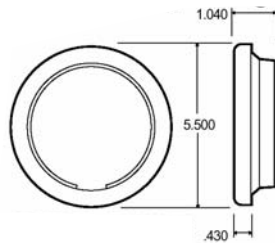
Flush mount vinyl PVC grommet, mounts in panel thickness up to 1/4", suitable for PC requirements on a 45° angle with incandescent lamps.



Trucklite Mounting Grommet for 4" Lamps

Part# **TKL40700**

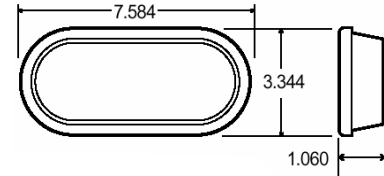
PVC grommet, flush mount 4" diameter lamps in a 4-1/2" hole, designed for shock absorbency.



Trucklite Oval Mounting Grommet

Part# **TKL60700**

For 60 Series products, allows flush mounting, PVC grommet, designed for shock absorbency.



Grommets- made of black Nitrile

| Part# | Item |
|--------------------|-------------------|
| MISGROMMET4..... | 1/4" Grommet |
| MISGROMMET6..... | 3/8" Grommet |
| MISGROMMET8..... | 1/2" Grommet |
| MISGROMMET8W..... | 1/2" Wide Grommet |
| MISGROMMET10..... | 5/8" Grommet |
| MISGROMMET10W..... | 5/8" Wide Grommet |
| MISGROMMET12..... | 3/4" Wide Grommet |
| MISGROMMET16..... | 1" Grommet |
| MISGROMMET24..... | 1-1/2" Grommet |





For Pricing

Call DBL Toll Free: 1-877-DBL-TANK

Monday thru Friday

7:00 AM - 5:00 PM

Saturdays

6:00 AM - 12:00 AM

**Or you can fax or email us at anytime and
we will get back to you ASAP**

Fax: 717-653-4106

Email: dbltank@dbltank.com