

**Light Boxes & Light Brackets**

DBL's fabrication department stocks 13 different styles of the tank industry's most popular light boxes. All light boxes are made in-house with attention given to every detail to ensure a clean and appealing light box. If you cannot find the light box you are looking for we can custom make a light box to your exact specifications. Whatever your light box needs are DBL's fabrication department can meet them.

In addition to light boxes, DBL stocks 5 different styles of light brackets with the option of customizing your own light bracket for your tank or trailer.

**Hell Stainless Steel Light Box**

18 gauge stainless steel construction with a 10 gauge mounting plate for extra support. Dimensions: 8" tall, 5" deep, and 27" long. Four 7/16" holes for mounting. Available in two hole sizes to accommodate Betts or Trucklite Lights. Standard 2-3/4" marker light on both. Please specify Betts or Trucklite style when ordering.



**Butler Stainless Steel Light Box**

18 gauge body and face, 14 gauge light end, and 10 gauge mounting plate. Dimensions; 8-1/4" tall, 5-1/2" deep, and 26-1/4" long. Two 4-3/4" holes for Betts lights and one 2-3/4" standard hole for marker light. Mounting plate has five 7/16" holes plus wiring holes.



**Fruehauf Stainless Steel Light Box**

16 gauge body and face, 14 gauge light end, and 10 gauge channel mount. Dimensions; 10" tall, 5-1/2" deep, and 26-1/4" long. Channel mount style with wiring holes and four 7/16" holes for mounting. Two 4-3/4" holes for Betts lights and one 2-3/4" hole for marker light.



**Fruehauf Aluminum Light Box**

.125 light end and face, .090 body, and .250 channel mount. Dimensions; 10" tall, 5-1/2" deep, and 26-1/4" long. Channel mount style with wiring holes and four 7/16" holes for mounting. Two 4-3/4" holes for Betts lights and one 3" hole for marker light.



**Brenner Stainless Steel Light Box**

18 gauge stainless steel construction with a 10 gauge channel style mount for extra support. Dimensions; 7-5/8" tall, 4-5/8" deep, and 27-1/2" long. Two 4-1/2" holes for Trucklite lights and one 2-3/4" hole for standard side marker. Four 7/16" mounting holes.



**Polar Stainless Steel Light Box**

18 gauge body, 14 gauge light end, and 10 gauge mounting plate. Dimensions; 7" tall, 4-1/4" deep, and 27-1/4" long. Two 4-1/2" holes for Trucklite lights and one 2-3/4" hole for standard side marker. Four 9/16" holes for mounting.



**Hell Aluminum Extruded Light Box**

.125 extrusion, .090 back, .190 light end and .250 mounting plate. Dimensions; 6" tall, 5" deep, and 28-1/2" long. Two 4-3/4" holes for Betts lights and one 2-3/4" hole for standard side marker. Four 7/16" holes for mounting.



**Hell Aluminum End Mount Light Box**

.125 body, .125 light end, and .250 mounting plate. Dimensions; 6" tall, 4-1/2" deep, and 27-1/2" long. Two 4-3/4" holes for Betts lights and one 2-3/4" hole for standard side marker. Four 7/16" x 5/8" slotted holes for mounting.



**Hell Aluminum Back Mount Light Box**

.125 body, light end, and wire end. Dimensions; 6" tall, 3-1/2" deep, and 27-1/2" long. Two 4-3/4" holes for Betts lights and one 2-3/4" hole for standard marker light. Three 7/16" x 5/8" slotted holes for mounting. Stainless steel reinforcement plate included.



**Walker Stainless Steel Farm Pick-Up Light Box**

Completely 16 gauge. Dimensions; 16" tall, 11-1/2" wide, and 12" deep. Three 4-1/2" holes for Trucklite lights and one 2-3/4" hole for standard side marker. No mounting holes.



**Walker Stainless Steel Transport Light Box**

18 gauge BA body and 10 gauge mounting plate. Dimensions 8" tall, 8" wide, and 28" long. Two 4-1/2" holes for Trucklite lights and one 2-3/4" hole for standard side marker. Three 9/16" holes for mounting.



**Walker Stainless Steel Farm Pick-Up Light Box**

Completely 16 gauge #4F. Dimensions; 21" tall, 9" deep, and 6" wide. Three 4-1/2" holes for Trucklite lights and 2-3/4" for standard side marker. 1-1/2" wire hole in back for wiring access. No mounting holes.



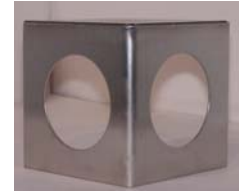
**Stainless Steel Oval Midship Light Bracket**

16 gauge stainless steel with 2-1/2" x 6-3/4" oval hole.



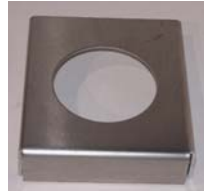
**Rear Marker Light Bracket**

Made of 16 gauge stainless steel with two 2-3/4" holes and a 4-1/2" square base for mounting. Dimensions: 4-1/2" x 4-1/2".



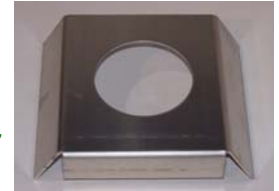
**Walker Marker Light Bracket**

Made of .090 Aluminum 5052 with standard 2-3/4" opening for side marker. Does not accept 1" x 4" reflector.



**Walker Front Fender Marker Light Bracket**

Made of .090 Aluminum 5052 with standard 2-3/4" opening for side marker. Accepts 1" x 4" reflector.



**Walker Aluminum Oval Midship Light Bracket**

Made of .090 aluminum 5052 with 2-1/2" x 6-3/4" oval hole.



DBL carries a large selection of Betts and Truck-Lite lights and accessories. To see what DBL has to offer please refer to pages 46-89 in the Electrical Section.

