

Electrical

Betts Clearance and/or Side Markers.....	47-54
Betts License Lamp and Stop, Turn, Tail, and/or Clearance and License.....	55-57
Betts Stop, Turn, and/or Tail.....	57-63
Betts Back-up Lamps.....	64-65
Betts Cabinet/Meter/Dome (Single Contact).....	66-68
Betts Sealed Beam Flood, Spot, and/or Work Lamp.....	68-71
Betts Strobe.....	72-74
Betts LED Insert.....	75-77
Betts Lenses.....	78
Trucklite Lights.....	79-81
Solenoids, Switches, Breakers, Fuses, Boxes, etc.....	82-83
Junction Boxes and Accessories.....	83
Contacts, Cables, Clips, Harnesses, Shock Mount Sockets and Other Hardware.....	84-86
Receptacles and Plugs.....	85-86
Trucklite Mounts and Grommets.....	87-89

Information for Betts Lighting

s.c. = single contact

d.c. = double contact

N.P.T = National Pipe Thread

Easy Reference Color Coding For Betts Light Fixtures

Red = Incandescent Lighting

Blue = LED Lighting

Black = Halogen/Strobe

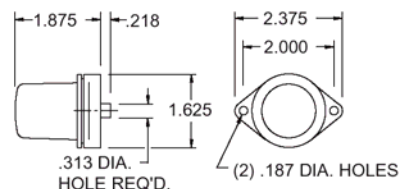
Green = Miscellaneous (lenses, bulbs, etc.)

Replacement parts for lighting (bulbs, lenses, etc.) can be found mostly in the descriptions for each series of lights.

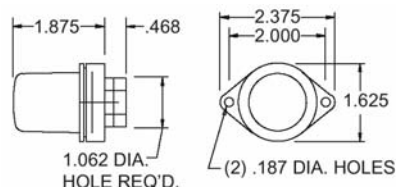


Combination Clearance and Side Marker

Features a deep **BEL920053** red or **BEL920054** amber deep lens. Uses a **BEL67** s.c. bulb. Surface mount.



Part#	
BEL240004	Red, aluminum body
BEL240005	Amber, aluminum body



Combination Clearance and Side Marker

Features a deep **BEL920053** red or **BEL920054** amber deep lens. Uses a **BEL67** s.c. bulb. Provided with a 1/4" N.P.T. rear entry. Surface mount.

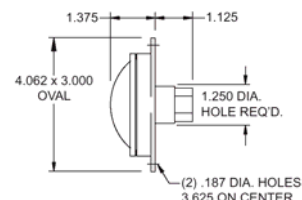


Part#	
BEL240011	Red, aluminum body
BEL240012	Amber, aluminum body

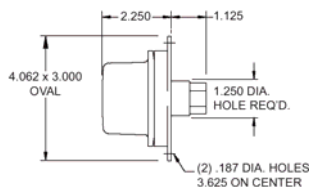
Combination Clearance and Side Marker

Incandescent bulb version features a **BEL920109** red or **BEL920110** amber shallow lens. Uses s.c. bulb socket **BEL920125** and a **BEL67** s.c. bulb. LED version features a s.c. bulb base **BEL510007** red or **BEL510008** amber shallow LED lens assembly. Both lamps are provided with a 1/4" N.P.T. rear entry and surface mount. Aluminum lamps to be discontinued upon Valox replacement availability.

For more information please contact DBL today



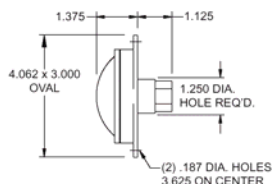
Part#	
BEL500012	Red, aluminum body
BEL500013	Amber, aluminum body
BEL500212	Red LED, aluminum body
BEL500213	Amber LED, aluminum body



Combination Clearance and Side Marker

Incandescent bulb version features a **BEL920116** red or **BEL920117** amber deep lens. Uses s.c. bulb socket **BEL920127** and a **BEL67** s.c. bulb. LED version features s.c. bulb base **BEL510017** red or **BEL510018** amber deep LED lens assembly. Both lamps are provided with a 1/4" N.P.T. rear entry and surface mount. Aluminum lamps to be discontinued upon Valox replacement availability.

Part#	
BEL500014	Red, aluminum body
BEL500015	Amber, aluminum body
BEL500018	Red LED, aluminum body
BEL500019	Amber LED, aluminum body



Combination Clearance and Side Marker

A special purpose d.c. incandescent lamp featuring a **BEL920116** red or **BEL920117** amber deep lens. Uses a d.c. bulb socket **BEL920126** and a **BEL1157** bulb.

LED version is available in either a shallow or deep lens. The deep version features a d.c. bulb base **BEL510037** red or **BEL510038** amber LED lens assembly. The shallow version features a d.c. bulb base **BEL510027** red or **BEL510028** amber LED lens assembly. Both lamps are provided with a 1/4" N.P.T. rear entry and surface mount.

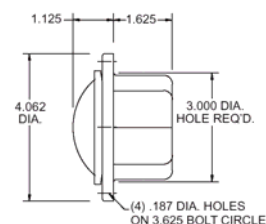
Part#	Description
BEL500018	Red deep, aluminum body
BEL500019	Amber deep, aluminum body
BEL500218	Red deep LED, aluminum body
BEL500219	Amber deep LED, aluminum body
BEL500223	Red shallow LED, aluminum body
BEL500224	Amber shallow LED, aluminum body

Combination Clearance and Side Marker

Incandescent bulb version features a **BEL920109** red or **BEL920110** amber shallow lens. Uses a s.c. shock mount bulb socket **BEL920367** and a **BEL67** s.c. bulb.

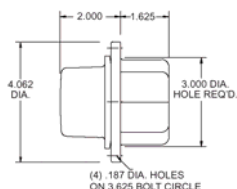
LED version in aluminum features a **BEL510005** red or **BEL510006** amber LED lens assembly. The Valox version features a **BEL510001** red or **BEL510002** amber LED lens assembly.

Both bodies must be drilled and tapped for wire entry unless otherwise stated. Recess mount. Available with choke seals installed upon request.



Part#	Description
BEL560002	Red shallow, aluminum body
BEL560003	Amber shallow, aluminum body
BEL560019	Red shallow, Valox body
BEL560020	Amber shallow, Valox body

Part#	Description
BEL560202	Red shallow LED, aluminum body
BEL560203	Amber shallow LED, aluminum body
BEL560219	Red shallow LED, Valox body
BEL560220	Amber shallow LED, Valox body



Combination Clearance and Side Marker

Incandescent bulb version features a **BEL920116** red or **BEL920117** amber deep lens. Uses a s.c. shock mount bulb socket **BEL920104** and a **BEL67** bulb.

LED version in aluminum features a **BEL510015** red or **BEL510016** s.c. LED lens assembly. Valox lamps use **BEL510011** red or **BEL510012** amber s.c. LED lens assembly. Body must be drilled and tapped for wire entry unless otherwise stated. Recess mount. Also available with choke seal or ground strap.

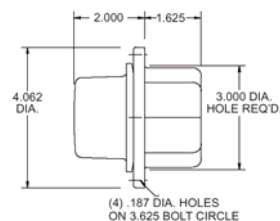
Part#	Description
BEL560004	Red deep, aluminum body
BEL560005	Red deep, Valox body
BEL560006	Amber deep, aluminum body
BEL560007	Amber deep, Valox body

Part#	Description
BEL560204	Red deep LED, aluminum body
BEL560205	Red deep LED, Valox body
BEL560206	Amber deep LED, aluminum body
BEL560207	Amber deep LED, Valox body

Combination Clearance and Side Marker

A special purpose lamp with all the features of above lamps but equipped with a double contact shock mount bulb socket **BEL920103**. Uses a **BEL1157** d.c. bulb.

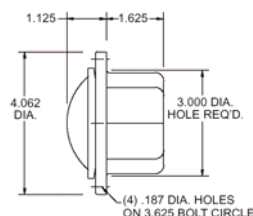
The LED version is available in both aluminum and Valox bodies. The lamp is also available in either a shallow or a deep lens. The deep lens aluminum body lamp uses a d.c. **BEL510035** red or a **BEL510036** amber LED lens assembly. The shallow lens aluminum body lamp uses a d.c. **BEL510025** red or a **BEL510026** amber LED lens assembly. The deep lens Valox lamp uses a d.c. **BEL510031** red or a **BEL510032** amber LED lens assembly. The shallow lens Valox body uses a d.c. **BEL510021** red or a **BEL510022** amber LED lens assembly. All bodies must be drilled and tapped for wire entry unless otherwise stated. Recess mount.



Also available with choke seals and ground straps

Part#	Description
BEL560015	Red deep, aluminum body
BEL560016	Amber deep, aluminum body
BEL560023	Red deep, Valox body
BEL560024	Amber deep, Valox body

Part#	Description
BEL560215	Red deep LED, aluminum body
BEL560216	Amber deep LED, aluminum body
BEL560223	Red deep LED, Valox body
BEL560224	Amber deep LED, Valox body



Combination Clearance and Side Marker

A special purpose Valox lamp featuring a single, Multi-voltage d.c. diode. Lamps are available in either a shallow or a deep lens version. The deep lens version uses a **BEL510054** red or **BEL510053** amber LED lens assembly. The shallow lens version uses a **BEL510052** red or a **BEL510051** amber LED lens assembly. Body must be drilled and tapped for wire entry unless otherwise noted. Recess mount.

Available with cable choke seal installed.

For more information on Betts Lighting call DBL today

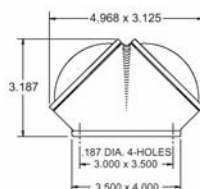
Part#	Description
BEL560323	Red deep Multi-voltage single LED, Valox body
BEL560324	Amber deep Multi-voltage single LED, Valox body
BEL560351	Red shallow Multi-voltage single LED, Valox body
BEL560352	Amber shallow Multi-voltage single LED, Valox body

Combination Clearance and Side Marker

A dual lens lamp available in an incandescent bulb or LED version. The bulb version features (2) shallow lenses, either (2) **BEL920109** red or **BEL920110** amber. The lamp uses (2) s.c. shock mount sockets and (2) **BEL67** s.c. bulbs.

The LED version features (2) s.c. **BEL510005** red or **BEL510006** amber LED lens assemblies.

Body must be drilled and tapped for wire entry. Surface mount.



Part#	Description
BEL560011	Red shallow, aluminum body
BEL560012	Amber shallow, aluminum body
BEL560211	Red shallow LED, aluminum body
BEL560212	Amber shallow LED, aluminum body

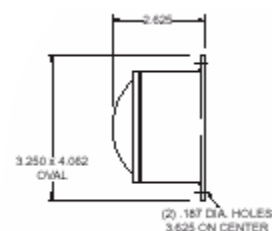
Combination Clearance and Side Marker

A lamp only previously available in aluminum is also now molded in tough durable Valox material as well. Both versions are available with a shallow or deep lens option. The incandescent bulb shallow lens version features a **BEL920109** red or **BEL920110** amber lens. The lamp uses a s.c. shock mount bulb socket **BEL920367** and a **BEL67** s.c. bulb. The incandescent bulb deep lens version features a **BEL920116** red or a **BEL920117** amber lens. The lamp uses a s.c. shock mount bulb socket **BEL920104** and a **BEL67** s.c. bulb.

The LED shallow lens version features a **BEL510001** red or **BEL510002** amber s.c. LED lens assembly. The LED version is only available in Valox. The shallow version features a **BEL510001** red or a **BEL510002** amber s.c. LED lens assembly and the deep lens version features a **BEL510011** red or a **BEL510012** amber s.c. LED lens assembly.

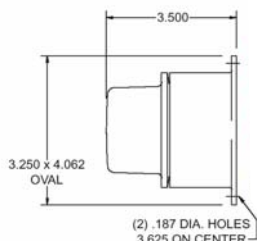
Body must be drilled and tapped for wire entry. Surface Mount.

For more information please contact DBL



Part#	Description
BEL570001	Red shallow, aluminum body
BEL570002	Amber shallow, aluminum body
BEL570021	Red shallow lights, Valox body
BEL570022	Amber shallow lights, Valox body

Part#	Description
BEL570221	Red shallow LED, Valox body
BEL570222	Amber shallow LED, Valox body

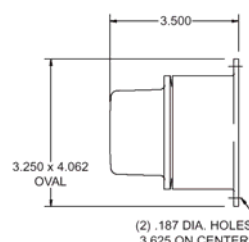
Combination Clearance and Side Marker

Part#	Description
BEL570003	Red deep, aluminum body
BEL570004	Amber deep, aluminum body
BEL570023	Red deep, Valox body
BEL570024	Amber deep, Valox body
BEL570223	Red deep LED, Valox body
BEL570224	Amber deep LED, Valox body

Combination Clearance and Side Marker

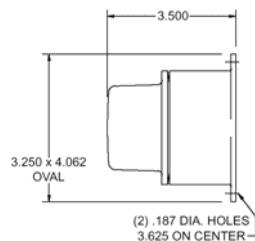
A special purpose lamp with all the features of the above lamps but equipped with a d.c. shock mount bulb socket **BEL920103** and a **BEL1157** d.c. bulb.

The LED version is only available in Valox. The shallow version features a **BEL510021** red or a **BEL510022** amber d.c. LED lens assembly and the deep lens version features a **BEL510031** red or a **BEL510032** amber d.c. LED lens assembly. Body must be drilled and tapped for wire entry. Surface Mount.



Part#	Description
BEL570014	Red deep, aluminum body
BEL570015	Amber deep, aluminum body
BEL570034	Red deep, Valox body
BEL570035	Amber deep, Valox body

Part#	Description
BEL570234	Red deep LED, Valox body
BEL570235	Amber deep LED, Valox body
BEL570239	Red shallow LED, Valox body
BEL570240	Amber shallow LED, Valox body



Combination Clearance and Side Marker

A special purpose d.c., Valox lamp, featuring an LED lens assembly consisting of a single, multi-voltage d.c. diode.

The LED version is only available in Valox. The shallow version features a **BEL510052** red or a **BEL510051** amber d.c. LED lens assembly and the deep lens version features a **BEL510054** red or a **BEL510053** amber d.c. LED lens assembly.

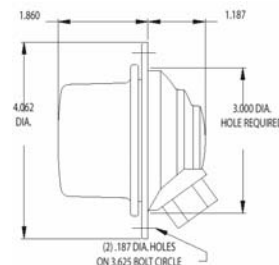
Part#	Description
BEL570334	Red deep LED, Valox body
BEL570335	Amber deep LED, Valox body

Part#	Description
BEL570339	Red shallow LED, Valox body
BEL570340	Amber shallow LED, Valox body

Clearance or Side Marker

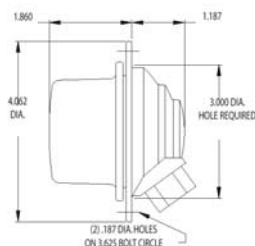
Incandescent version features a **BEL920109** red or a **BEL920110** amber shallow lens. Uses a s.c. bulb socket **BEL920125** and a **BEL67** s.c. bulb.

The shallow lens LED version uses a s.c. bulb base **BEL510007** red or **BEL510008** amber LED lens assembly. Provided with a 1/4" N.P.T. threaded entry. Recess mount. Aluminum lamps to be discontinued upon Valox replacement availability.



Part#	Description
BEL600011	Red shallow, aluminum body
BEL600012	Amber shallow, aluminum body

Part#	Description
BEL600211	Red shallow, LED aluminum body
BEL600212	Amber shallow, LED aluminum body



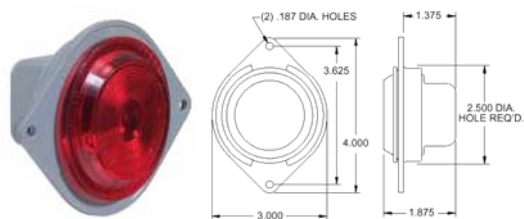
Clearance or Side Marker

A special purpose lamp featuring a **BEL920116** red or **BEL920117** amber deep lens. Uses a d.c. bulb socket **BEL920126** and an **BEL1157** bulb. The LED version is available in either a shallow or a deep lens.

The deep lens lamp uses a d.c. bulb base **BEL510037** red or a **BEL510038** amber LED lens assembly. The shallow lens lamp uses a d.c. bulb base **BEL510027** red or a **BEL510028** amber LED lens assembly. Provided with a 1/4" N.P.T. threaded entry. Recess mount. Aluminum lamps to be discontinued upon Valox replacement availability.

Part#	Description
BEL600013	Red deep lens, aluminum body
BEL600014	Amber deep lens, aluminum body

Part#	Description
BEL600213	Red deep, LED lens, aluminum body
BEL600214	Amber deep, LED lens, aluminum body
BEL600215	Red shallow, LED lens, aluminum body
BEL600216	Amber shallow, LED lens, aluminum body



Clearance or Side Marker Two Side Entrances

Incandescent bulb version features a **BEL920228** red or a **BEL920229** amber shallow lens and is available in a gray or black Valox body. The **BEL168** s.c. bulb is mounted in a shock mount assembly for longer life. Provided with (1) or (2) **BEL920413** watertight and vapor proof choke seals.

The LED version is available in the same body colors and entrance configurations. It uses a **BEL660001** red or a **BEL660002** amber LED lens assembly. Recess mount.

For more information please contact DBL

Part#	Description
BEL650001	Red, Gray Valox body
BEL650002	Amber, Gray Valox body
BEL651001	Red, Black Valox body
BEL651002	Amber, Black Valox body

Part#	Description
BEL650201	Red LED, Gray Valox body
BEL650202	Amber LED, Gray Valox body
BEL651201	Red LED, Black Valox body
BEL651202	Amber LED, Black Valox body

Clearance or Side Marker One Rear Entrance

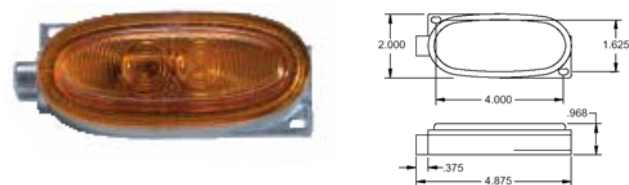
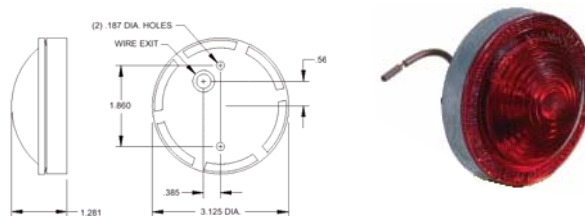
Part#	Description
BEL650007	Red, Gray Valox body
BEL650008	Amber, Gray Valox body
BEL651007	Red, Black Valox body
BEL651008	Amber, Black Valox body

Part#	Description
BEL650207	Red, LED, Gray Valox body
BEL650208	Amber LED, Gray Valox body
BEL651207	Red LED, Black Valox body
BEL651208	Amber LED, Black Valox body

Clearance and Side Marker

A conventional grommet entry lamp with a shallow lens. Uses a **BEL67** s.c. bulb and **BEL910109** red or **BEL910110** amber lens. Surface mount.

Part#	Description
BEL100011	Red, aluminum body
BEL100012	Amber, aluminum body



Clearance and Side Marker One 1/8" N.P.T End Entrance

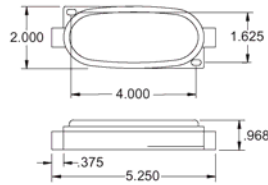
A low profile incandescent bulb version that features a **BEL920049** red or **BEL920050** amber lens. Lamp uses a **BEL67** s.c. bulb.

LED version features a **BEL201201** red or **BEL201202** amber LED lens assembly. Surface mount, can be mounted horizontally or vertically.

Part#	Description
BEL200011	Red, aluminum body
BEL200012	Amber, aluminum body

Part#	Description
BEL200211	Red LED, aluminum body
BEL200212	Amber LED, aluminum body

Clearance and Side Marker
Two 1/8" N.P.T Side Entrances

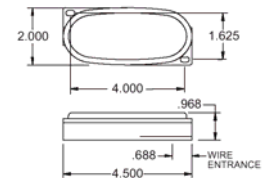


Part#	Description
BEL210001	Red, aluminum body
BEL210002	Amber, aluminum body
BEL210201	Red LED, aluminum body
BEL210202	Amber LED, aluminum body



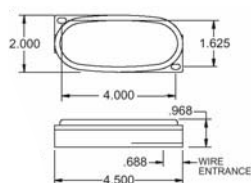
Clearance and Side Marker
One 1/4" N.P.T Rear Entrance

Part#	Description
BEL211001	Red, aluminum body
BEL211002	Amber, aluminum body
BEL211201	Red LED, aluminum body
BEL211202	Amber LED, aluminum body



Clearance and Side Marker
Two 1/4" N.P.T Rear Entrances

Part#	Description
BEL212001	Red, aluminum body
BEL212002	Amber, aluminum body
BEL212201	Red LED, aluminum body
BEL212202	Amber LED, aluminum body



Part#	Description
BEL213001	Red, aluminum body
BEL213002	Amber, aluminum body
BEL213201	Red LED, aluminum body
BEL213202	Amber LED, aluminum body



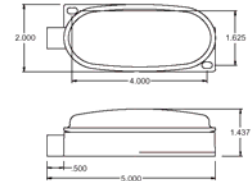
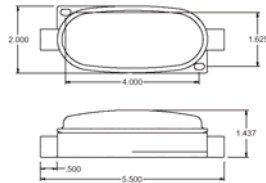
Clearance and Side Marker

Incandescent bulb version features a REFLEX **BEL920058** red or a **BEL920059** amber lens. The lamp features a bulb replaceable shock mount socket and brass inserts with machine screws for positive connections and uses a **BEL168** s.c. bulb.

LED version uses a **BEL221201** red or **BEL221202** amber LED REFLEX lens assembly. Surface mount, can be mounted horizontally or vertically.

**Clearance or Side Marker
One 1/4" N.P.T Side Entrance**

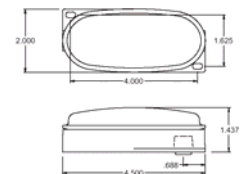
Part#	Description
BEL200017	Red, Valox body
BEL200018	Amber, Valox body
BEL200217	Red LED, Valox body
BEL200218	Amber LED, Valox body

**Clearance or Side Marker
One 1/4" N.P.T End Entrance**

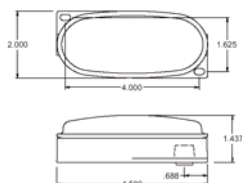
Part#	Description
BEL210005	Red, Valox body
BEL210006	Amber, Valox body
BEL210205	Red LED, Valox body
BEL210206	Amber LED, Valox body

**Clearance and Side Marker
One 1/4" N.P.T Rear Entrance**

Part#	Description
BEL211005	Red, Valox body
BEL211006	Amber, Valox body
BEL211205	Red LED, Valox body
BEL211206	Amber LED, Valox body

**Clearance and Side Marker
Two 1/4" N.P.T Rear Entrance**

Part#	Description
BEL212003	Red, Valox body
BEL212004	Amber, Valox body
BEL212203	Red LED, Valox body
BEL212204	Amber LED, Valox body

**Clearance and Side Marker
Two 1/8" N.P.T Side Entrances**

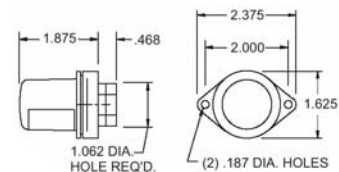
Part#	Description
BEL215001	Red, Valox body
BEL215002	Amber, Valox body
BEL215201	Red LED, Valox body
BEL215202	Amber LED, Valox body



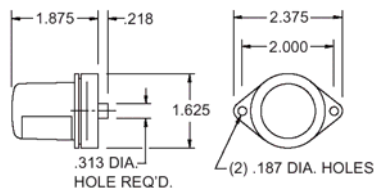


License Lamp

Threaded entry model license lamp. Uses a **BEL67** s.c. bulb and a **BEL920055** silver lens. Furnished with a 1/4 N.P.T. entrance. Surface mount.



Part#	Description
BEL240001	Silver, aluminum body
BEL240002	Silver, aluminum body with a 920088 choke seal installed
BEL240009	Silver, aluminum body with a 920045 choke seal installed and 4' of 2 conductor cable



License Lamp

Features a **BEL920055** silver lens. Uses a **BEL67** s.c. bulb. Surface mount.

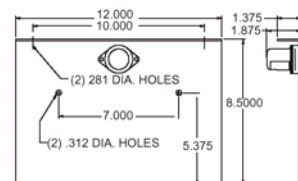
Part#	Description
BEL240003	Silver, aluminum body
BEL240008	Silver, aluminum body with 4' of BSXL wire installed



License Lamp

A grommet entry lamp **BEL240002** comes attached to a gray powder coated 12 gauge. steel license plate bracket **BEL920062**. Lamp features a silver **BEL920055** lens and uses a s.c. **BEL67** bulb.

Part#	Description
BEL240010	Silver, aluminum body



License Lamp

A tough Valox body lamp available in an incandescent bulb or LED version. The incandescent bulb version features a **BEL920141** red lens, a **BEL920459** d.c. shock mount socket and an **BEL1157** bulb.

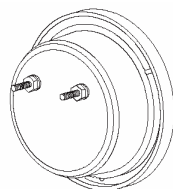
The LED version uses a **BEL710025** Multi-voltage single diode lens assembly. Body must be drilled and tapped for wire entry unless otherwise stated. Recess mount.

Part#	Description
BEL400041	Red, Valox body
BEL400061	Red, Valox body with choke seals installed
BEL400068	Red, Valox body (replaces 70-03222)
BEL400088	Red, Valox body with ground strap (replaces 40-03222)

Part#	Description
BEL403041	Red Multi-voltage single diode LED, Valox body
BEL403061	Red Multi-voltage single diode LED, Valox body with (3) 920413
BEL403068	Red Multi-voltage single diode LED, Valox body with ground strap
BEL403088	Red Multi-voltage single diode LED, Valox body with chassis ground

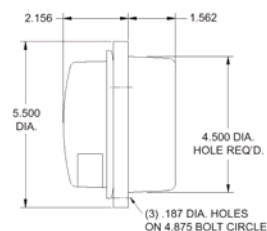


Valox Model

**Stop/Turn Tall or Clearance and License**

A compact size lamp available in both incandescent or LED. The lamp bodies are both currently offered in both aluminum or molded Valox. The incandescent bulb version features a **BEL920141** red lens and uses a **BEL920459** d.c. shock mount socket and **BEL1157** bulb. The LED version is only available in Valox and uses a **BEL710025** multi-voltage single LED lens assembly. Aluminum lamps to be discontinued at a future date.

Other light options available, please call DBL for further details

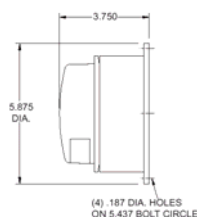


Part#	Description
BEL450030	Red, Valox body
BEL450043	Red, Valox body with 18" pigtails installed
BEL453030	Red, Multi-voltage single diode LED, Valox body
BEL453043	Red, Multi-voltage single diode LED, Valox body with 18" pigtails installed

Stop/Turn or Clearance and License

A tough Valox body lamp available in an incandescent bulb or LED version. The incandescent bulb version features a 920141 red lens, a **BEL920459** d.c. shock mount socket and an **BEL1157** bulb.

The LED version uses **BEL710025** Multi-voltage single diode lens assembly. Surface mount. Body must be drilled and tapped for wire entry.



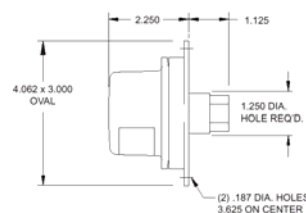
Part#	Description
BEL470022	Red, Valox body
BEL473022	Red, Multi-voltage single diode LED, Valox body

**License (S.C.)**

An aluminum body lamp that features a **BEL920113** lens. Uses a **BEL920127** s.c. socket and **BEL67** bulb. Provided with a 1/4 N.P.T. rear entry. Surface mount. Aluminum lamps to be discontinued upon Valox replacement availability.

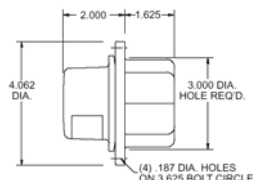


Part#	Description
BEL500021	Red, aluminum body

**License (S.C.)**

An incandescent lamp available in either aluminum or molded Valox. Features a **BEL920113** red lens and a uses a **BEL920104** s.c. shock mount socket and **BEL67** bulb.

Body must be drilled and tapped for wire entry unless otherwise stated. Recess mount. Aluminum lamps to be discontinued at a future date.



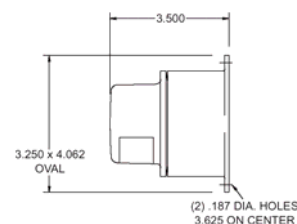
Part#	Description
BEL560017	Red, aluminum body
BEL560025	Red, Valox body
BEL560034	Red, Valox body with (1) 920413 choke seal installed





License (S.C.)

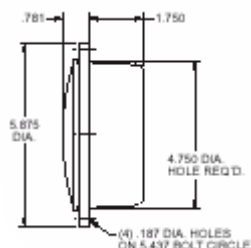
A lamp that was only previously offered in aluminum is now available in tough molded Valox. They both feature a **BEL920113** red lens and use a s.c. **BEL920104** shock mount socket and **BEL67** bulb. Surface mount. Body must be drilled for wire entry. Aluminum lamps to be discontinued at a future date.



Part#	Description
BEL570016	Red, aluminum body
BEL570036	Red, Valox body

Stop, Turn, Tail Lamps

A Valox body lamp available in both incandescent and LED versions. The incandescent version features either a **BEL920134** red or a **BEL920135** amber shallow lens. Lamps are available in either a single contact or double contact function. The single contact uses a **BEL920460** socket and **BEL1156** bulb and the double contact uses a **BEL920459** socket and **BEL1157** bulb.



The LED version has two options for the number of LED's used in the assemblies. The 60 diode option uses a **BEL710001** red or **BEL710002** amber shallow LED lens assembly that can be used either as a single contact or double contact lamp. The Multi-volt-age single diode option is currently only available in a red double contact lamp and consists of a **BEL920134** red lens and **BEL920680** diode assembly. Body must be drilled for wire entry unless otherwise stated. Recess mount. Below are but a few of the different models available.



If you do not see what you need, please call DBL for our full line of Betts lights.

Turn (S.C.)

Part#	Description
BEL400037	Amber, Valox body
BEL400056	Amber, Valox body with choke seals installed
BEL400083	Amber, Valox body with ground strap

Part#	Description
BEL402037	Amber LED, Valox body
BEL402056	Amber LED, Valox body with choke seals
BEL402083	Amber LED, Valox body with ground strap

Stop or Turn (S.C.)

Part#	Description
BEL400036	Red, Valox body
BEL400055	Red, Valox body with choke seals installed
BEL400064	Red, Valox body with ground strap and a 1/4 N.P.T. hole in rear center
BEL400074	Red, Valox body with 18" pigtails installed
BEL400082	Red, Valox body with ground strap

Stop, Turn, Tail or Clearance (D.C.)

Part#	Description
BEL400039	Red Valox body
BEL400053	Red, Valox body with 18" pigtails installed
BEL400086	Red, Valox body with ground strap

Part#	Description
BEL402039	Red LED, Valox body
BEL402053	Red LED, Valox body with 18" pigtails
BEL402086	Red LED, Valox body with ground strap

Multi-Volt Stop, Turn, Tail or Clearance (D.C.)

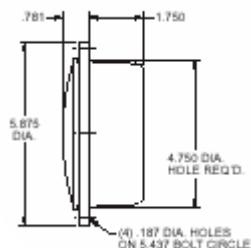
Part#	Description
BEL403039	Red LED, Valox body

Part#	Description
BEL403086	Red LED, Valox body with ground strap

Stop, Turn, Tail Lamps

Valox body lamp available in both incandescent and LED versions. The incandescent version features either a **BEL920144** red or a **BEL920145** amber deep lens. Lamps are available in either a single contact or double contact function. The single contact uses a **BEL920460** socket and **BEL1156** bulb and the double contact uses a **BEL920459** socket and **BEL1157** bulb.

The LED version uses a **BEL710011** red or **BEL710012** amber deep LED lens assembly that can be used either as a single contact or double contact lamp. Body must be drilled for wire entry unless otherwise stated. Recess mount.



If you do not see the style you need please call DBL for our full line of Betts Lights.

Turn (S.C.)

Part#	Description
BEL400058	Amber, Valox body with choke seals installed
BEL400070	Amber, Valox body
BEL400085	Amber, Valox body with ground strap

Part#	Description
BEL402058	Amber LED, Valox body with choke seals
BEL402070	Amber LED, Valox body
BEL402085	Amber LED, Valox body with ground strap

Stop or Turn (S.C.)

Part#	Description
BEL400038	Red, Valox body
BEL400057	Red, Valox body with choke seals installed
BEL400084	Red, Valox body with ground strap

Stop, Turn, Tail or Clearance (D.C.)

Part#	Description
BEL400040	Red, Valox body
BEL400060	Red, Valox body with choke seals installed
BEL400067	Red, Valox body with ground strap and a 1/4 N.P.T. hole in rear center
BEL400087	Red, Valox body with ground strap

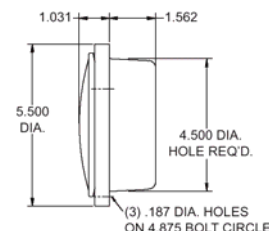
Part#	Description
BEL402040	Red LED, Valox body
BEL402060	Red LED, Valox body with choke seals
BEL402067	Red LED, Valox body with ground strap and a 1/4 N.P.T. hole in rear center
BEL402087	Red LED, Valox body with ground strap

Stop, Turn, Tail Lamps



A compact size lamp available in both incandescent and LED versions. The lamp bodies are both currently offered in both aluminum or molded Valox. The incandescent version features either a **BEL920134** red or a **BEL920135** amber shallow lens. Lamps are available in either a single contact or double contact function. The single contact uses a **BEL920460** socket and **BEL1156** bulb and the double contact uses a **BEL920459** socket and **BEL1157** bulb.

The LED versions have two options for the number of LED's used in the assemblies. The Valox 60 diode version uses a **BEL710001** red or **BEL710002** amber shallow LED lens assembly. The Valox Multi-voltage single diode version uses a **BEL20134** red lens and **BEL920680** diode assembly. The aluminum 60 diode version uses a **BEL710003** red or a **BEL710004** amber shallow LED lens assembly. The aluminum Multi-voltage single diode version uses a **BEL920134** red lens and **BEL920680** diode assembly. The LED lens assemblies can be used either as a single contact or double contact lamp. Body must be drilled for wire entry unless otherwise stated. Recess mount



Note: Aluminum bodies to be discontinued at a future date.

Models with choke seals, conductor cables, and mount studs also available, please call DBL if you have any questions

Turn (S.C.)

Part#	Description
BEL450002	Amber, aluminum body
BEL450025	Amber, Valox body
BEL450048	Amber, Valox body with 18" pigtail

Part#	Description
BEL452002	Amber LED, aluminum body
BEL452025	Amber LED, Valox body
BEL452048	Amber LED, Valox body with 18" pigtail

Stop or Turn (S.C.)

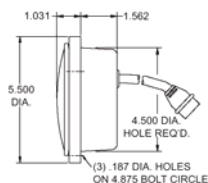
Part#	Description
BEL450001	Red, aluminum body
BEL450024	Red, Valox body
BEL450047	Red, Valox body with 18" pigtail

Part#	Description
BEL452020	Red LED, aluminum body with 18" pigtail
BEL452047	Red LED, Valox body with 18" pigtail
BEL453047	Red Multi-voltage LED, Valox body with 18" pigtail installed

Stop or Turn (S.C.)

Part#	Description
BEL450005	Red, aluminum body
BEL450012	Red, aluminum body with 18" pigtail
BEL450028	Red, Valox body
BEL450042	Red, Valox body with 18" pigtail

Part#	Description
BEL452005	Red LED, aluminum body
BEL452012	Red LED, aluminum body with 18" pigtail
BEL452028	Red LED, Valox body
BEL452042	Red LED, Valox body with 18" pigtail



Stop, Turn, Tall or Clearance

No more replacing of expensive throw-away lamps. The Betts "Smart 45" is a permanent lamp with either a replaceable bulb or LED version. It replaces most 4" lamps. It features a 6" 3 conductor plug that will fit most existing harnesses from other manufacturers. The incandescent version uses a **BEL920134** red lens and **BEL920459** double contact shock stopper socket with a **BEL1157** bulb or a **BEL920135** amber lens with a **BEL920460** single contact shock stopper socket and **BEL1156** bulb.

The LED version is available in two versions. The 60 diode version uses a **BEL710001** red or a **BEL710002** amber LED lens assembly. The single Multi-voltage diode version uses a **BEL920134** red lens and either a **BEL920680** or **BEL920691** diode assembly.



Part#	Description
BEL452069	Red LED, black Valox body
BEL452070	Amber LED, black Valox body
BEL453069	Red Multi-voltage LED, black Valox body

Part#	Description
BEL453070	Amber Multi-voltage LED, black Valox body
BEL450069	Red, with black Valox body

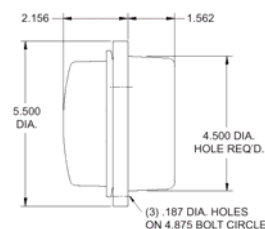
Stop, Turn, Tall Lamps

A compact size lamp available in both incandescent and LED versions. The lamp bodies are both currently offered in both aluminum or molded Valox. The incandescent version features either a **BEL920144** red or a **BEL920145** amber deep lens. Lamps are available in either a single contact or double contact function. The single contact uses a **BEL920460** socket and **BEL1156** bulb and the double contact uses a **BEL920459** socket and **BEL1157** bulb.

The LED is available in both aluminum and Valox 60 diode versions. The Valox version uses a **BEL710011** red or **BEL710012** amber deep LED lens assembly. The aluminum LED version uses a **BEL710013** red or a **BEL710014** amber deep LED lens assembly. The LED lens assemblies can be used either as a single contact or double contact lamp. Body must be drilled for wire entry unless otherwise stated.

Note: Aluminum bodies to be discontinued at a future date.

For any additional information or question please call DBL today



Turn (S.C.)

Part#	Description
BEL450004	Amber, aluminum body
BEL450027	Amber, Valox body
BEL450053	Amber, Valox body with choke seals

Part#	Description
BEL452004	Amber LED, aluminum body
BEL452027	Amber LED, Valox body
BEL452053	Amber LED, Valox body with choke seals

Stop or Turn (S.C.)

Part#	Description
BEL450003	Red, aluminum body
BEL450026	Red, Valox body
BEL450052	Red, Valox body with choke seals

Stop, Turn, Tall or Clearance (S.C.)

Part#	Description
BEL450006	Red, aluminum body
BEL450029	Red, Valox body
BEL450055	Red, Valox body with choke seals

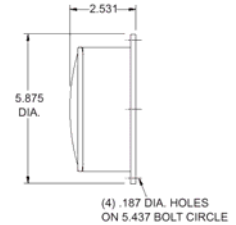
Part#	Description
BEL452006	Red LED, aluminum body
BEL452029	Red LED, Valox body
BEL452055	Red LED, Valox body with choke seals



Stop, Turn, Tall Lamps

A surface mount lamp available in both incandescent and LED versions. The incandescent version features a **BEL920134** red or a **BEL920135** amber shallow lens and uses a **BEL920460** s.c. socket and a **BEL1156** bulb or a **BEL920459** d.c. socket and a **BEL1157** bulb.

The LED version uses a **BEL710001** red or a **BEL710002** amber LED lens assembly.
Surface mount.
Body must be drilled and tapped for wire entry.



Turn (S.C.)

Part#	Description
BEL470017	Amber, Valox body
BEL472017	Amber LED, Valox body

Stop, Turn or Tall (S.C.)

Part#	Description
BEL470020	Red, Valox body
BEL472020	Red, LED Valox body
BEL473020	Red Multi-voltage single LED, Valox body

Stop or Turn (S.C.)

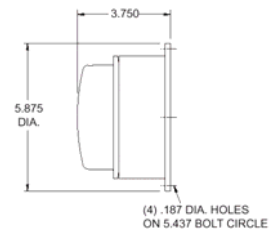
Part#	Description
BEL470016	Red, Valox body



Stop, Turn, Tall Lamps

A surface mount lamp available in both incandescent and LED versions. The incandescent version features a **BEL920134** red or a **BEL920135** amber shallow lens and uses a **BEL920460** s.c. socket and a **BEL1156** bulb or a **BEL920459** d.c. socket and a **BEL1157** bulb.

The LED version uses a **BEL710001** red or a **BEL710002** amber LED lens assembly.
Surface mount.
Body must be drilled and tapped for wire entry.



Turn (S.C.)

Part#	Description
BEL470019	Amber, Valox body
BEL472019	Amber LED Valox body

Turn (S.C.)

Part#	Description
BEL470021	Red, Valox body
BEL472021	Red, LED Valox body

Stop or Turn (S.C.)

Part#	Description
BEL470018	Red, Valox body

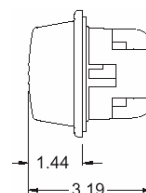
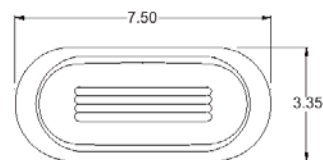
Stop, Turn, Tail Lamps

A tough nylon bodied lamp available in both an incandescent or Multi-voltage LED version. Both versions feature a **BEL920454** red or a **BEL920464** amber lens. The incandescent version uses a **BEL920460** s.c. socket and **BEL1156** bulb or a **BEL920459** d.c. socket and **BEL1157** bulb.



The LED version features a **BEL920685** red LED assembly for front or rear stop, turn, and tail. For amber, two assemblies are utilized - a **BEL920686** LED assembly for a side turn and marker or a **BEL920692** for rear turn only. Bodies are available with either a cable choke seal entrance or a wire choke seal entrance. Recess mount.

If you cannot find the part you are looking for please call DBL for assistance.

**Turn (S.C.)**

Part#	Description
BEL730003	Amber, with 920413 cable choke seal
BEL730013	Amber, with 920420 wire choke seal
BEL735003	Amber Multi-voltage single diode LED, with 920413 cable choke seal

Stop or Turn (S.C.)

Part#	Description
BEL730002	Red, with 920413 cable choke seal
BEL730012	Red, with 920420 wire choke seal

Side Turn/Marker (D.C.)

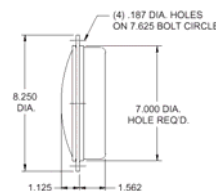
Part#	Description
BEL730005	Amber, with 920413 cable choke seal
BEL730007	Amber, plug-in replacement lamp with 3 conductor female plug
BEL733003	Amber Multi-voltage single diode LED, with 920413 cable choke seal
BEL733007	Amber Multi-voltage single diode LED, plug in replacement lamp with 3 conductor plug

Stop, Turn, Tail or Clearance (D.C.)

Part#	Description
BEL730001	Red, with 920413 cable choke seal
BEL730006	Red, plug-in replacement lamp with 3 conductor plug
BEL733001	Red Multi-voltage single diode LED, with 920413 cable choke seal
BEL733006	Red Multi-voltage single diode LED, plug in replacement lamp with 3 conductor plug

77 Series Stop, Turn, Tail Lamps

77 series lamps feature a Valox body and are available in an incandescent or a red LED version. The incandescent bulb version features a **BEL920152** red or a **BEL920153** amber lens. The single contact lamp uses a **BEL920460** socket and **BEL1156** bulb and the double contact lamp uses a **BEL920459** socket and **BEL1157** bulb. The LED version uses a **BEL920687** red LED assembly that can either be used as a single or double contact lamp. Bodies must be drilled and tapped for wire entry unless otherwise stated. Recess mount.

**Turn (S.C.)**

Part#	Description
BEL770002	Amber
BEL770005	Amber, with 12 feet of 2 conductor cable

Stop Turn, Tail or Clearance (D.C.)

Part#	Description
BEL770003	Red, Valox body
BEL770006	Red, Valox body with 12 feet of 3 conductor cable
BEL773001	Red, Multi-voltage single diode LED
BEL773006	Red, Multi-voltage single diode LED, with 12 feet of 3 conductor cable installed

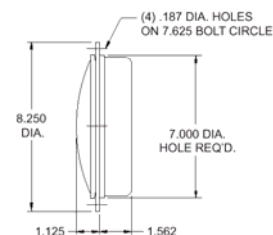
Stop or Turn (S.C.)

Part#	Description
BEL770001	Red
BEL770004	Red, with 12 feet of 2 conductor cable
BEL773023	Red, Multi-voltage single diode LED

Series 77 Turn (S.C.)



77 series lamps feature a Valox body and are available in an incandescent or a LED version. The incandescent bulb version features a **BEL920156** red arrow or a **BEL920157** amber arrow lens and uses a **BEL920460** socket and **BEL1156** bulb. The LED version uses a **BEL920687** red LED assembly for the red arrow or a **BEL920688** amber LED assembly for the amber arrow lens. Bodies must be drilled and tapped for wire entry unless otherwise stated. Recess mount. Also available with conductor cable and mounting studs (not listed).



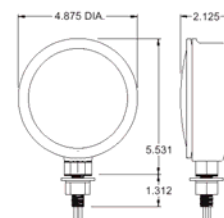
Part#	Description
BEL770021	Red, Valox body
BEL770022	Amber, Valox body

Part#	Description
BEL773021	Red, Multi-voltage single diode LED
BEL773022	Amber, Multi-voltage single diode LED

Stop, Turn and Tall



Pedestal mount aluminum body lamp available in a incandescent and LED version. Incandescent bulb version features a **BEL920134** red or **BEL 920135** amber lens. The single contact bulb version uses a **BEL920015** s.c. socket and **BEL1156** bulb and the double contact lamp uses a **BEL920013** d.c. socket and **BEL1157** bulb. The LED versions use a **BEL710003** red or **BEL710004** amber LED lens assembly. Requires a mounting hole large enough to accommodate a 9/16 inch diameter stud mount. Lamps include 18 inch pigtails.



Turn (S.C.)

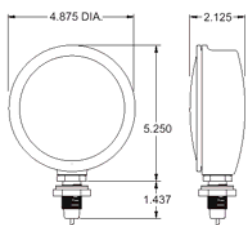
Part#	Description
BEL810012	Amber, aluminum body
BEL810212	Amber LED, aluminum

Stop Turn, Tall, or Clearance (D.C.)

Part#	Description
BEL810013	Red, aluminum body
BEL810213	Red LED, aluminum

Stop or Turn (S.C.)

Part#	Description
BEL810011	Red, aluminum body



Stop, Turn and Tall

Pedestal mount aluminum body lamp available in a incandescent and LED version. Incandescent bulb version features a **BEL920134** red or **BEL920135** amber lens. The single contact bulb version uses a **BEL920015** s.c. socket and **BEL1156** bulb and the double contact lamp uses a **BEL920013** d.c. socket and **BEL1157** bulb. The LED versions use a **BEL710003** red or **BEL710004** amber LED lens assembly. Requires a mounting hole large enough to accommodate a 13/16 inch diameter stud mount. Lamps include 18 inch pigtails.



Turn (S.C.)

Part#	Description
BEL800012	Amber, aluminum body
BEL800212	Amber LED, aluminum

Stop, Turn, Tall, or Clearance (D.C.)

Part#	Description
BEL800013	Red, aluminum body
BEL800213	Red LED, aluminum

Stop or Turn (S.C.)

Part#	Description
BEL800011	Red, aluminum body

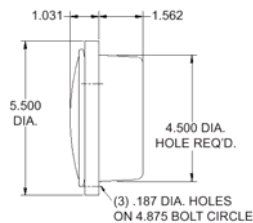
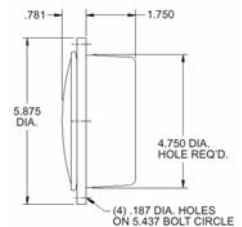
Back-Up Lamps

Back up lamps are now available in incandescent or LED versions. The incandescent version features a **BEL920139** clear lens and a **BEL920460** socket and **BEL1156** bulb. The LED version uses a **BEL920691** clear LED assembly. Bodies must be drilled and tapped for wire entry unless otherwise noted. Recess mount.

NOTE: Two back up lamps are required per vehicle to meet F.M.V.S.S. 108 conformance.



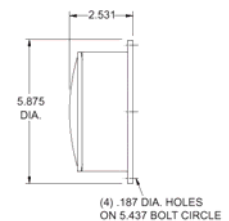
Part#	Description
BEL400043	Clear, Valox body
BEL400063	Clear, Valox body with choke seals
BEL400075	Clear, Valox body (replaces 70-04112)
BEL400089	Clear, Valox body with chassis ground
BEL405043	Clear, Multi-voltage single diode LED, Valox body



Part#	Description
BEL450008	Clear, aluminum body
BEL450018	Clear, aluminum body conductor cable
BEL450032	Clear, Valox body
BEL450057	Clear, Valox body with choke seals
BEL450067	Clear, Valox body with conductor cable
BEL455032	Clear, Multi-voltage single diode LED, Valox body
BEL455067	Clear, Multi-voltage single diode LED, Valox body with conductor cable



Part#	Description
BEL470024	Clear, Valox body
BEL475024	Clear, Multi-voltage single diode LED, Valox body

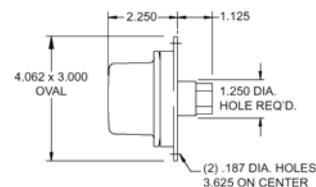




Back-Up Lamp

Back-up lamp with a 1/4" N.P.T. threaded rear entry. Lamp features a **BEL920112** deep clear lens and a **BEL920460** single contact bulb socket with a **BEL1156** bulb. Surface mount.

NOTE: Two back up lamps are required per vehicle to meet F.M.V.S.S. 108 conformance.



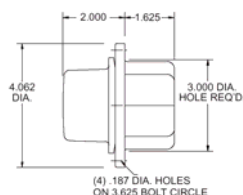
Part#	Description
BEL500011	Clear, aluminum body

Back-Up Lamp

Back-up lamp featuring both a Valox or aluminum body. Both bodies feature a **BEL920112** deep clear lens and use a **BEL920367** socket with a **BEL1156** bulb. Bodies must be drilled and tapped for wire entrance unless noted. Recess mount.

NOTE: Two back up lamps are required per vehicle to meet F.M.V.S.S. 108 conformance. Aluminum bodies to be discontinued at a future date.

For further information on any Betts product, contact DBL



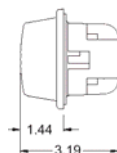
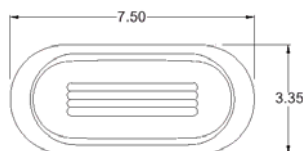
Part#	Description
BEL560001	Clear, aluminum body
BEL560027	Clear, Valox body with choke seal
BEL560037	Clear, Valox body

Back-Up Lamp

A tough nylon bodied lamp available in both an incandescent or Multi-voltage LED version. Both versions feature a **BEL920497** clear lens. The incandescent version uses a **BEL920459** s.c. socket and **BEL1156** bulb.

The LED version features a **BEL920692** clear LED assembly. Bodies must be drilled and tapped for wire entry unless otherwise noted. Recess mount.

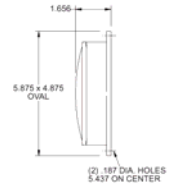
NOTE: Two back up lamps are required per vehicle to meet F.M.V.S.S. 108 conformance.



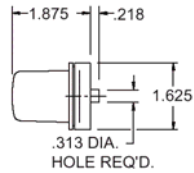
Part#	Description
BEL730004	Clear, with 920413 cable choke seal
BEL730008	Clear, plug-in replacement lamp with 3 conductor plug
BEL730014	Clear, with 920420 wire choke seal
BEL735004	Clear, Multi-voltage single diode LED, with 920413 cable choke seal
BEL735008	Clear, Multi-voltage single diode LED, plug in replacement lamp with 3 conductor plug

**Cabinet/Meter/Dome (S.C)**

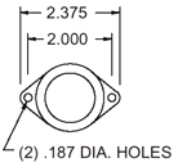
Low profile dome or cabinet light with a **BEL920077** 3 amp toggle switch and a **BEL920133** clear shallow lens. Incandescent lamp uses a **BEL920014** socket and **BEL1141** bulb. LED version is only available in Valox and uses a **BEL710026** lens assembly. Internal ground must be provided. Surface mount.



Part#	Description
BEL820011	Clear, aluminum body
BEL820317	Clear, Multi-voltage single diode LED, Valox body

**Cabinet/Meter/Dome (S.C)**

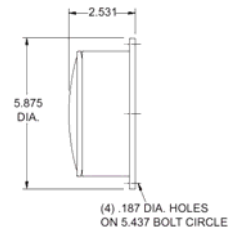
Features a **BEL920055** polycarbonate deep lens and flat back aluminum body. Lamp uses a s.c. **BEL67** bulb only. Surface mount.



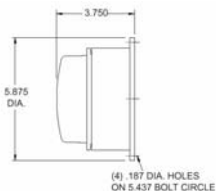
Part#	Description
BEL820011	Clear, aluminum body

**Cabinet/Meter/Dome (S.C)**

A dome or cabinet light with a **BEL920038** 20 amp toggle switch and a **BEL920140** clear deep lens. Lamp uses a **BEL920460** shock mount socket and **BEL1141** bulb. LED version uses a **BEL710027** lens assembly. Internal ground must be provided. Surface mount. Lamp must be drilled and tapped for wire entry.



Part#	Description
BEL470043	Clear, Valox body
BEL470343	Clear, Multi-voltage single diode LED, Valox body

**Cabinet/Meter/Dome (S.C)**

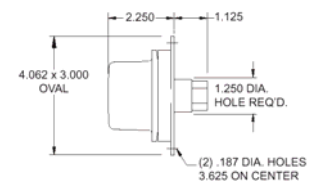
A threaded entry model dome or cabinet light with a **BEL920115** clear shallow lens. Lamp uses a **BEL920125** socket and a s.c. **BEL67** bulb only. Furnished with a 1/4" N.P.T. wire entrance. Surface mount. Aluminum lamps to be discontinued upon Valox replacement availability.



Part#	Description
BEL470043	Clear, Valox body

**Cabinet/Meter/Dome (S.C)**

A threaded entry model dome or cabinet light with a **BEL920111** clear deep lens. Lamp uses a **BEL920125** socket and a s.c. **BEL1141** bulb only. Furnished with a 1/4" N.P.T. wire entrance. Surface mount. Aluminum lamps to be discontinued upon Valox replacement availability.

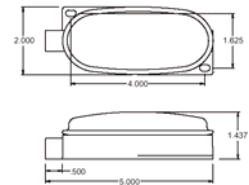


Part#	Description
BEL500017	Clear, aluminum body

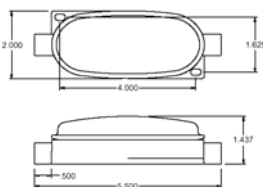


Cabinet/Meter/Dome (S.C)

A dome, meter, or cabinet light available in both aluminum or Valox bodies. Aluminum bodies feature a 1/8" N.P.T. wire entrance and the Valox body features a 1/4" N.P.T. entrance on one side. The aluminum body features a **BEL920048** clear lens and a **BEL67** bulb. The Valox body uses a **BEL920057** clear lens and a **BEL168** bulb. Surface mount.



Part#	Description
BEL200023	Clear, aluminum body
BEL200024	Clear, Valox body
BEL200224	Clear LED, Valox Body



Cabinet/Meter/Dome (S.C)

A dome, meter, or cabinet light available in both aluminum or Valox bodies. Aluminum bodies feature a 1/8" N.P.T. wire entrance and the Valox body features a 1/4" N.P.T. entrance on both sides. The aluminum body features a **BEL920048** clear lens and a **BEL67** bulb. The Valox body uses a **BEL920057** clear lens and a **BEL168** bulb. Surface mount.



Part#	Description
BEL210009	Clear, aluminum body
BEL210010	Clear, Valox body

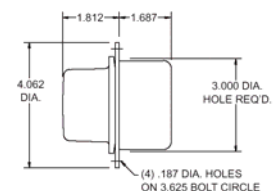
Cabinet/Meter/Dome (S.C)

A dome, meter, or cabinet light available in both aluminum or Valox bodies and in a deep or shallow lens. Lamps are also available in incandescent bulb or LED versions. Incandescent bulb versions feature a **BEL920115** clear shallow lens and a **BEL920367** socket and **BEL1141** s.c. bulb. The LED versions feature a **BEL510055** shallow LED lens assembly or a **BEL510056** deep LED lens assembly. Bodies must be drilled and tapped for wire entry unless otherwise specified. Aluminum bodies to be discontinued at a future date. Recess mount.



Cabinet/Meter/Dome Shallow Lens (S.C.)

Part#	Description
BEL560008	Clear, aluminum body
BEL560036	Clear, Valox body
BEL560381	Clear, Multi-voltage single diode LED, Valox body
BEL560383	Clear, Multi-voltage single diode LED, Valox body with choke seal installed



Cabinet/Meter/Dome Shallow Lens (S.C.)

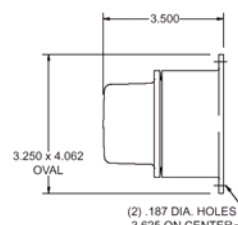
Part#	Description
BEL560009	Clear, aluminum body
BEL560382	Clear, Multi-voltage single diode LED, Valox body
BEL560384	Clear, Multi-voltage single diode LED, Valox body with BEL920413 choke seal installed

Cabinet/Meter/Dome (S.C.)

A dome, meter, or cabinet light available in both aluminum or Valox bodies and in a deep or shallow lens. Lamps are also available in incandescent bulb or LED versions.

BEL920078 3 amp switches are available in the deep lens incandescent bulb version and in both deep and shallow lens LED versions. Incandescent bulb versions feature a **BEL920115** clear shallow lens and a **BEL920367** socket with a **BEL67** s.c. bulb or a **BEL920111** clear deep lens with a **BEL920367** socket and **BEL1141** s.c. bulb only. The LED versions feature a **BEL510055** shallow LED lens assembly or a **BEL510056** deep LED lens assembly. Surface mount. Bodies must be drilled and tapped for wire entry unless otherwise specified. Aluminum bodies to be discontinued at a future date.

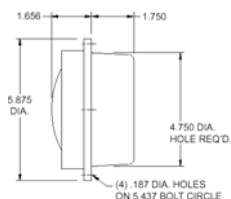
For more information please contact DBL

**Cabinet/Meter/Dome Shallow Lens (S.C.)**

Part#	Description
BEL570005	Clear, aluminum body without switch
BEL570025	Clear, Valox body without switch
BEL570325	Clear, Multi-voltage single diode LED, Valox body without switch
BEL570344	Clear, Multi-voltage single diode LED, Valox body with switch

Cabinet/Meter/Dome Deep Lens (S.C.)

Part#	Description
BEL570006	Clear, aluminum body with switch
BEL570026	Clear, Valox body with switch
BEL570326	Clear, Multi-voltage single diode LED, Valox body with switch
BEL570342	Clear, Multi-voltage single diode LED, Valox body without switch

**Sealed Beam Flood, Spot, and Work Lamp**

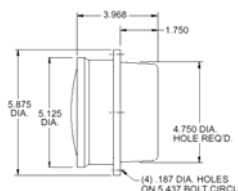
Sealed beam flood lamp features par 36 sealed beam bulb retained by EPDM retaining ring. Retaining ring uses a molded in o-ring which is received by the groove in housing for a secure waterproof assembly. Uses a clear (flood) **BEL4466** sealed beam bulb and **BEL920234** retaining ring. Body must be drilled and tapped for wire entry. Mounting gasket and screws included. Recess mount.



Part#	Description
BEL400044	Clear, Valox body
BEL400092	Clear, Valox body with chassis ground

Sealed Beam Flood, Spot, and Work Lamp

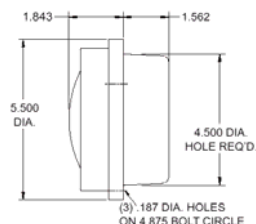
Sealed beam flood lamp features par 36 sealed beam bulb retained by EPDM retaining ring. A new style retaining ring **BEL920071** has the ability to hold the sealed beam bulb plus retaining a **BEL920143** clear shallow polycarbonate lens that protects the bulb from breakage. Uses a clear (flood) **BEL4466** sealed beam bulb and **BEL920071** retaining ring. Body must be drilled and tapped for wire entry. Mounting gasket and screws included. Recess mount.



Part#	Description
BEL400072	Clear, Valox body
BEL400094	Clear, Valox body with chassis ground

**Sealed Beam Flood, Spot, and Work Lamp**

Sealed beam flood lamp features par 36 sealed beam bulb retained by EPDM retaining ring. Retaining ring uses a molded in o-ring which is received by the groove in housing for a secure waterproof assembly. Uses a clear (flood) **BEL4466** sealed beam bulb and **BEL920234** retaining ring. Body must be drilled and tapped for wire entry. Mounting gasket and screws included. Recess mount.

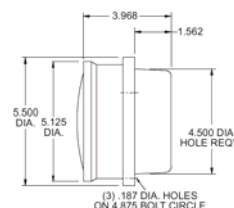


Part#	Description
BEL450010	Clear, aluminum body
BEL450033	Clear, Valox body

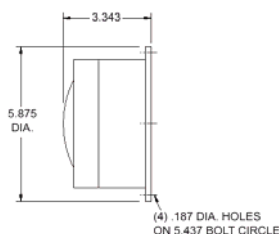


Sealed Beam Flood, Spot, and Work Lamp

Sealed beam flood lamp features par 36 sealed beam bulb retained by PDM retaining ring. A new style retaining ring BEL920071 has the ability to hold the sealed beam bulb plus retaining a BEL920143 clear shallow polycarbonate lens that protects the bulb from breakage. Uses a clear (flood) BEL4466 sealed beam bulb and BEL920071 retaining ring. Body must be drilled and tapped for wire entry. Mounting gasket and screws included. Recess mount. Aluminum bodies to be discontinued.



Part#	Description
BEL450062	Clear, aluminum body
BEL450063	Clear, Valox body



Sealed Beam Flood, Spot, and Work Lamp

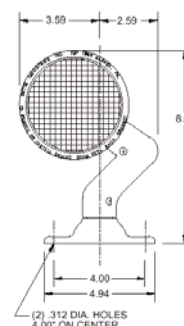
Sealed beam flood lamp features par 36 sealed beam bulb retained by EPDM retaining ring. Retaining ring uses a molded in o-ring which is received by the groove housing for a secure waterproof assembly. Uses a clear (flood) BEL4466 sealed beam bulb and BEL920234 retaining ring. Body must be drilled and tapped for wire entry. Mounting gasket and screws included. Surface mount.



Part#	Description
BEL470025	Clear, Valox body

Sealed Beam Flood, Spot, and Work Lamp

This par 36 sealed beam lamp features horizontal and vertical rotation on smooth operating neoprene o-rings. Pigtail(s) run directly to the bulb eliminating many contact point problems. Bulb is held by a BEL920234 retaining ring. Uses a clear incandescent (flood) BEL4466 or a clear halogen (spot) H7616 sealed beam bulb. Mounting gasket is included. Provided with (1) 18" BSXL abrasion resistant lead wire for chassis grounding or (2) lead wires for common grounding.



Incandescent Flood with 9(1) Lead Wire

Part#	Description
BEL315001	Clear, aluminum body (Shown)
BEL315003	Clear, aluminum body with 20 amp toggle switch

Halogen Spot with (1) Lead Wire

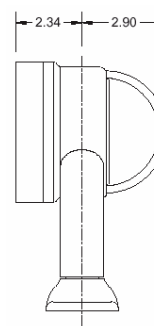
Part#	Description
BEL315005	Clear, aluminum body
BEL315007	Clear, aluminum body with 20 amp toggle switch

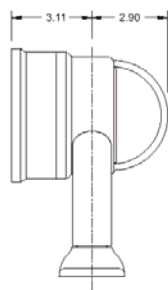
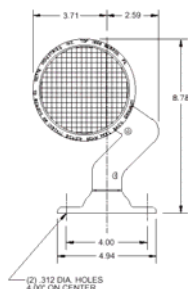
Incandescent Flood with (2) Lead Wires

Part#	Description
BEL325001	Clear, aluminum body
BEL325003	Clear, aluminum body with 20 amp toggle switch

Halogen Spot with (2) Lead Wires

Part#	Description
BEL325005	Clear, aluminum body
BEL325007	Clear, aluminum body with 20 amp toggle switch





Sealed Beam Flood, Spot, and Work Lamp

This par 36 sealed beam lamp features full horizontal and vertical rotation on smooth operating neoprene o-rings. Pigtail(s) run directly to the bulb eliminating many contact point problems. **Bulb is held by an extended retaining ring BEL920071 that has the ability to hold the sealed beam bulb plus retain a BEL920143 clear polycarbonate lens that protects the bulb from breakage.** Uses a clear incandescent BEL4466 or clear halogen (spot) H7616 sealed beam bulb. Mounting gasket is included. Provided with an 18" BSXL abrasion resistant lead wire for chassis grounding or (2) lead-wires for common grounding.



Incandescent Flood with 9(1) Lead Wire

Part#	Description
BEL315009	Clear, aluminum body (Shown)
BEL315010	Clear, aluminum body with 20 amp toggle switch

Halogen Spot with (1) Lead Wire

Part#	Description
BEL315011	Clear, aluminum body
BEL315012	Clear, aluminum body with 20 amp toggle switch

Incandescent Flood with (2) Lead Wires

Part#	Description
BEL325009	Clear, aluminum body
BEL325010	Clear, aluminum body with 20 amp toggle switch

Halogen Spot with (2) Lead Wires

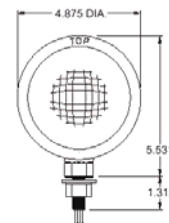
Part#	Description
BEL325011	Clear, aluminum body
BEL325012	Clear, aluminum body with 20 amp toggle switch



Pedestal Mount Sealed Beam Lamp

Pedestal mount sealed beam lamp has a 9/16" or 13/16" mounting stud. Uses a clear (flood) sealed beam bulb BEL4466 or an amber (fog) with a BEL920234 retaining ring. Mounting hardware is included. Provided with an 18" BSXL abrasion resistant pigtail.

For more information please contact DBL



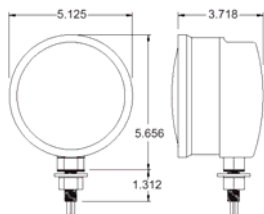
With 13/16" Mounting Stud

Part#	Description
BEL800014	Clear, aluminum body
BEL800015	Amber, aluminum body
BEL800018	Clear, aluminum body with 20 amp toggle switch

With 9/16" Mounting Stud

Part#	Description
BEL800016	Clear, aluminum body
BEL00017	Amber, aluminum body





Pedestal Mount Sealed Beam Lamp

Pedestal mount sealed beam lamp has a 9/16" or 13/16" mounting stud. Uses a clear (flood) sealed beam bulb **BEL4466** or an amber (fog) **BEL4415A** with a **BEL920071** extended retaining ring and shallow, clear lens **BEL920143**. Mounting hardware is included. Provided with an 18" BSXL abrasion resistant pigtail.



With 13/16" Mounting Stud

Part#	Description
BEL800019	Clear, aluminum body
BEL800020	Amber, aluminum body
BEL800023	Clear, aluminum body with 20 amp toggle switch

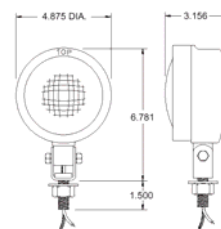
With 9/16" Mounting Stud

Part#	Description
BEL800021	Clear, aluminum body
BEL800022	Amber, aluminum body



Pedestal Mount Sealed Beam Lamp

A par 36 sealed beam lamp with adjustable pedestal mount and heavy duty 9/16" stud. Uses a **BEL920234** retaining ring and clear (flood) **BEL4466**, amber (fog) **BEL4415A** or a clear halogen (spot) **H7616** sealed beam bulb. Mounting hardware included. Provided with an 18" BSXL abrasion resistant pigtail.

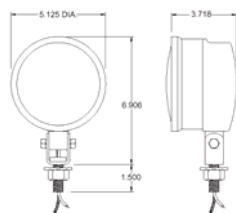


Painted

Part#	Description
BEL805001	Clear, aluminum body
BEL805002	Amber, aluminum body
BEL805003	Clear, aluminum body with 20 amp toggle switch
BEL805021	Halogen, clear, aluminum body
BEL805022	Halogen clear, aluminum body with 20 amp toggle

Chrome

Part#	Description
BEL805009	Clear, aluminum body
BEL805010	Amber, aluminum body
BEL805004	Clear, aluminum body with 20 amp toggle switch
BEL805024	Halogen, clear, aluminum body
BEL805023	Halogen, clear, aluminum body with 20 amp toggle



Pedestal Mount Sealed Beam Lamp

A par 36 sealed beam lamp with adjustable pedestal mount and heavy duty 9/16" stud. A new style retaining ring **BEL920071** has the ability to hold the sealed beam plus retain a **BEL920143** clear shallow polycarbonate lens that protects the bulb from breakage. Uses a clear (flood) **BEL4466**, amber (fog) **BEL4415A** or a clear halogen (spot) **H7616** sealed beam bulb. Mounting hardware included. Provided with an 18" BSXL abrasion resistant pigtail.



Painted

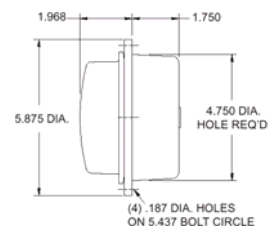
Part#	Description
BEL805011	Clear, aluminum body
BEL805012	Amber, aluminum body
BEL805013	Clear, aluminum body with 20 amp toggle switch
BEL805025	Halogen, clear, aluminum body
BEL805026	Halogen clear, aluminum body with 20 amp toggle

Chrome

Part#	Description
BEL805019	Clear, aluminum body
BEL805020	Amber, aluminum body
BEL805016	Clear, aluminum body with 20 amp toggle switch
BEL805027	Halogen, clear, aluminum body
BEL805028	Halogen, clear, aluminum body with 20 amp toggle

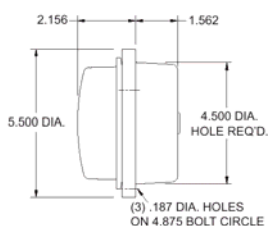
**Strobe Recess Mount (Permanent)**

Strobe featuring high impact Valox housing and polycarbonate lens. The Xenon flash tube with a life of 10 million flashes produces an (8) joule output per flash. Has a flash rate of 70 flashes per minute and an effective candle power of 102 with clear lens. Consumes 1 amp at 12 volts. Mounting gasket, screws and 8" pigtails included.



Part#	Description
BEL400046	With BEL920140 deep clear lens
BEL400047	With BEL920144 deep red lens

Part#	Description
BEL400048	With BEL920145 deep amber lens
BEL400049	With BEL920388 deep blue lens

**Strobe Recess Mount (Permanent)**

Strobe featuring high impact Valox housing and polycarbonate lens. The Xenon flash tube with a life of 10 million flashes produces an (8) joule output per flash. Has a flash rate of 70 flashes per minute and an effective candle power of 102 with clear lens. Consumes 1 amp at 12 volts. Mounting gasket, screws and 8" pigtails included.

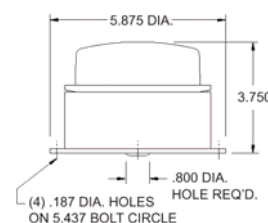


Part#	Description
BEL450035	With BEL920140 deep clear lens
BEL450036	With BEL920144 deep red lens

Part#	Description
BEL450037	With BEL920145 deep amber lens
BEL450038	With BEL920388 deep blue lens

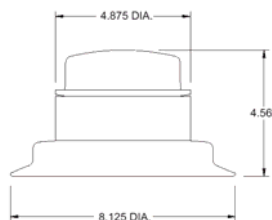
**Strobe Surface Mount (Permanent)**

Strobe featuring high impact Valox housing and polycarbonate lens. The Xenon flash tube with a life of 10 million flashes produces an (8) joule output per flash. Has a flash rate of 70 flashes per minute and an effective candle power of 102 with clear lens. Consumes 1 amp at 12 volts. Mounting gasket, screws and 8" pigtails included.



Part#	Description
BEL470028	With BEL920140 deep clear lens
BEL470029	With BEL920144 deep red lens

Part#	Description
BEL470030	With BEL920145 deep amber lens
BEL470031	With BEL920388 deep blue lens

**Strobe Surface Mount (Temporary)**

Strobe featuring high impact Valox housing and polycarbonate lens. The Xenon flash tube with a life of 10 million flashes produces an (8) joule output per flash. Has a flash rate of 70 flashes per minute and an effective candle power of 102 with clear lens. Consumes 1 amp at 12 volts. Includes suction gasket, magnet, 8 ft. of wire and cigarette lighter adapter.



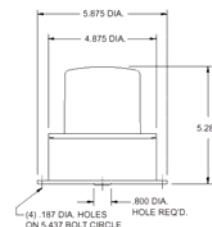
Part#	Description
BEL470047	With BEL920140 deep clear lens
BEL470048	With BEL920144 deep red lens

Part#	Description
BEL470049	With BEL920145 deep amber lens
BEL470050	With BEL920388 deep blue lens



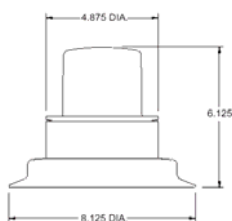
Strobe Roof Mount (Permanent)

Strobe featuring high impact Valox housing and polycarbonate lens. The Xenon flash tube with a life of 10 million flashes produces an (8) joule output per flash. Has a flash rate of 70 flashes per minute and an effective candle power of 102 with clear lens. Consumes 1 amp at 12 volts. Mounting gasket, screws and 8" pigtails included.



Part#	Description
BEL470032	With BEL920136 red high hat lens
BEL470033	With BEL920137 amber high hat lens

Part#	Description
BEL470034	With BEL920138 blue high hat lens
BEL470065	With BEL920409 clear high hat lens



Strobe Roof Mount (Temporary)

Strobe featuring high impact Valox housing and polycarbonate lens. The Xenon flash tube with a life of 10 million flashes produces an (8) joule output per flash. Has a flash rate of 70 flashes per minute and an effective candle power of 102 with clear lens. Consumes 1 amp at 12 volts. Includes suction gasket, magnet, 8 ft. of wire and cigarette lighter adapter.



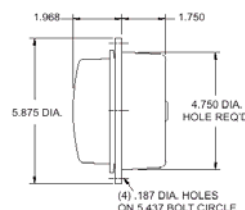
Part#	Description
BEL470051	With BEL920136 red high hat lens
BEL470052	With BEL920137 amber high hat lens

Part#	Description
BEL470053	With BEL920138 blue high hat lens
BEL470066	With BEL920409 clear high hat lens



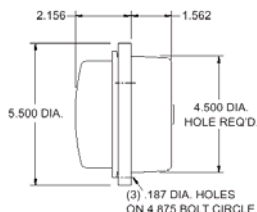
Strobe Recess Mount (Permanent)

Halogen beacons may be used in place of strobes for many applications. Halogen beacons feature a tough Valox housing and polycarbonate deep lens. Simplified circuitry along with good shock resistance insures less maintenance. The Halogen bulb is field replaceable. Mounting gasket, screws and 8" pigtails included.



Part#	Description
BEL400050	With BEL920144 deep red lens
BEL400051	With BEL920145 deep amber lens

Part#	Description
BEL400052	With BEL920388 deep blue lens
BEL400073	With BEL920140 deep clear lens



Strobe Recess Mount (Permanent)

Halogen beacons may be used in place of strobes for many applications. Halogen beacons feature a tough Valox housing and polycarbonate deep lens. Simplified circuitry along with good shock resistance insures less maintenance. The Halogen bulb is field replaceable. Mounting gasket, screws and 8" pigtails included.

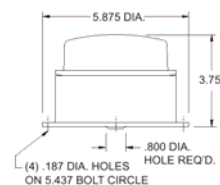


Part#	Description
BEL450039	With BEL920144 deep red lens
BEL450040	With BEL920145 deep amber lens

Part#	Description
BEL450041	With BEL920388 deep blue lens
BEL450066	With BEL920140 deep clear lens

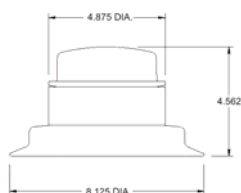
**Halogen Surface Mount (Permanent)**

Halogen beacons may be used in place of strobes for many applications. Halogen beacons feature tough Valox housing and polycarbonate high hat lens. Simplified circuitry along with good shock resistance insures less maintenance. The Halogen bulb is field replaceable. Mounting gasket, screws and 8" pigtails included.



Part#	Description
BEL470035	With BEL920144 deep red lens
BEL470036	With BEL920145 deep amber lens

Part#	Description
BEL470037	With BEL920388 deep blue lens
BEL470067	With BEL920140 deep clear lens

**Halogen Surface Mount (Temporary)**

Halogen beacons may be used in place of strobes for many applications. Halogen beacons feature a tough Valox housing and polycarbonate high hat lens. Simplified circuitry along with good shock resistance insures less maintenance. The Halogen bulb is field replaceable. Includes suction gasket, magnet, 8 ft. of wire and cigarette lighter adaptor.

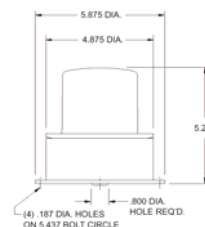


Part#	Description
BEL470054	With BEL920144 deep red lens
BEL470055	With BEL920145 deep amber lens

Part#	Description
BEL470056	With BEL920388 deep blue lens
BEL470068	With BEL920140 deep clear lens

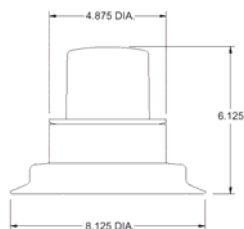
**Halogen Roof Mount (Permanent)**

Halogen beacons may be used in place of strobes for many applications. Halogen beacons feature a tough Valox housing and polycarbonate deep lens. Simplified circuitry along with good shock resistance insures less maintenance. The Halogen bulb is field replaceable. Mounting gasket, screws and 8" pigtails included.



Part#	Description
BEL470038	With BEL920136 red high hat lens
BEL470039	With BEL920137 amber high hat lens

Part#	Description
BEL470040	With BEL920138 blue high hat lens
BEL470069	With BEL920409 clear high hat lens

**Halogen Roof Mount (Temporary)**

Halogen beacons may be used in place of strobes for many applications. Halogen beacons feature a tough Valox housing and polycarbonate high hat lens. Simplified circuitry along with good shock resistance insures less maintenance. The Halogen bulb is field replaceable. Includes suction gasket, magnet, 8 ft. of wire and cigarette lighter adaptor.



Part#	Description
BEL470057	With BEL920136 red high hat lens
BEL470058	With BEL920137 amber high hat lens

Part#	Description
BEL470059	With BEL920138 blue high hat lens
BEL470070	With BEL920409 clear high hat lens



LED Lens Inserts For 200 Series Aluminum Lamps

Used in Betts low profile, aluminum body surface mount lamps that can be mounted horizontally or vertically. Features (4) light emitting diodes (LED's) in an epoxy sealed polycarbonate lens assembly.

For more information please contact DBL

Part#	Description
BEL201201	Red, LED lens insert with (1) eyelet & (1) butt connector
BEL201202	Amber, LED lens insert with (1) eyelet & (1) butt connector

Part#	Description
BEL201203	Red, LED lens insert with (2) butt connectors.
BEL201204	Amber, LED lens insert with (2) butt connectors.

LED Lens Inserts For 200 Series Valox Lamps

Used in Betts Valox body surface mount lamps that can be mounted horizontally or vertically. Features (6) light emitting diodes (LED's) in an epoxy sealed REFLEX polycarbonate lens assembly.



Part#	Description
BEL221201	Red, LED REFLEX lens insert with (2) eyelets
BEL221202	Amber, LED REFLEX lens insert with (2) eyelets

LED S.C. Lens Inserts For 50, 56, 57, & 60 Series Aluminum Lamps

Used in Betts aluminum body surface and recessed mount lamps. Single contact lens features (4) light emitting diodes (LED's) in an epoxy sealed lens assembly. Available in both shallow and deep lenses.



Part#	Description
BEL510003	Red, shallow LED lens insert with (2) butt connectors
BEL510004	Amber, shallow LED lens insert with (2) butt connectors
BEL510005	Red, shallow LED lens insert with (1) eyelet & (1) butt connector
BEL510006	Amber, shallow LED lens insert with (1) eyelet & (1) butt connector
BEL510007	Red, shallow LED lens insert with S.C. bulb base
BEL510008	Amber, shallow LED lens insert with S.C. bulb base

Part#	Description
BEL510013	Red, deep LED lens insert with (2) butt connectors
BEL510014	Amber, deep LED lens insert with (2) butt connectors
BEL510015	Red, deep LED lens insert with (1) eyelet & (1) butt connector
BEL510016	Amber, deep LED lens insert with (1) eyelet & (1) butt connector
BEL510017	Red, deep LED lens insert with S.C. bulb base
BEL510018	Amber, deep LED lens insert with S.C. bulb base

**LED S.C. Lens Inserts For 56 Series Valox Lamps**

Used in Betts Valox body recessed mount lamps. Single contact lens features (4) light emitting diodes (LED's) in an epoxy sealed lens assembly. Available in both shallow and deep lenses.

Part#	Description
BEL510001	Red, shallow LED lens insert with (2) eyelets
BEL510002	Amber, shallow LED lens insert with (2) eyelets

Part#	Description
BEL510011	Red, deep LED lens insert with (2) eyelets
BEL510012	Amber, deep LED lens insert with (2) eyelets

LED Special Purpose D.C. Lens Inserts For 50, 56, 57, & 60 Series Aluminum Lamps

Used in Betts aluminum body surface and recessed mount lamps. Double contact lens. It features a double contact lens with (4) light emitting diodes (LED's) on low power that increases to 12 LED's on high power in an epoxy sealed lens assembly. Available in both shallow and deep lenses.



Part#	Description
BEL510023	Red, shallow LED lens insert with (3) butt connectors.
BEL510024	Amber, shallow LED lens insert with (3) butt connectors
BEL510025	Red, shallow LED lens insert with (1) eyelet & (2) butt connectors
BEL510026	Amber, shallow LED lens insert with (1) eyelet & (2) butt connectors
BEL510027	Red, shallow LED lens insert with D.C. bulb base
BEL510028	Amber, shallow LED lens insert with D.C. bulb base

Part#	Description
BEL510033	Red, deep LED lens insert with (3) butt connectors.
BEL510034	Amber, deep LED lens insert with (3) butt connectors
BEL510035	Red, deep LED lens insert with (1) eyelet & (2) butt connectors
BEL510036	Amber, deep LED lens insert with (1) eyelet & (2) butt connectors
BEL510037	Red, deep LED lens insert with D.C. bulb base
BEL510038	Amber, deep LED lens insert with D.C. bulb base

LED Special Purpose D.C. Lens Inserts For 56 Series Valox Lamps

Used in Betts Valox body recessed mount lamps. Double contact lens. It features a double contact lens with (4) light emitting diodes (LED's) on low power that increases to 12 LED's on high power in an epoxy sealed lens assembly. Available in both shallow and deep lenses.



Part#	Description
BEL510021	Red, shallow LED lens insert with (3) eyelets
BEL510022	Amber, shallow LED lens insert with (3) eyelets

Part#	Description
BEL510031	Red, deep LED lens insert with (3) eyelets
BEL510032	Amber, deep LED lens insert with (3) eyelets

LED Lens Inserts For 40, 45, 47 and 70 Series Aluminum Lamps

Used in Betts aluminum body surface and recessed mount lamps. Double contact polycarbonate lens assembly features (60) light emitting diodes (LED's) on low power to provide tail or marker function that increase to high power output for stop or turn functions. Available in both shallow and deep lenses for 12 or 24 volt applications.



Part#	Description
BEL710003	Red, shallow LED lens insert with (1) eyelet & (2) butt connectors
BEL710004	Amber, shallow LED lens insert with (1) eyelet & (2) butt connectors
BEL710007	Red, shallow LED lens insert with (1) eyelet & (2) butt connectors, 24 volt
BEL710008	Amber, shallow LED lens insert with (1) eyelet & (2) butt connectors, 24 volt
BEL710009	Red, shallow LED lens insert with D.C. bulb base
BEL710010	Amber, shallow LED lens insert with D.C. bulb base

Part#	Description
BEL710013	Red, deep LED lens insert with (1) eyelet & (2) butt connectors
BEL710014	Amber, deep LED lens insert with (1) eyelet & (2) butt connectors
BEL710017	Red, deep LED lens insert with (1) eyelet & (2) butt connectors, 24 volt
BEL710018	Amber, deep LED lens insert with (1) eyelet & (2) butt connectors, 24 volt
BEL710019	Red, deep LED lens insert with D.C. bulb base, 24 volt
BEL710020	Amber, deep LED lens insert with D.C. bulb base, 24 volt

LED Lens Inserts For 40, 45, and 47 Series Valox Lamps

Used in Betts Valox body surface and recessed mount lamps. Double contact polycarbonate lens assembly features (60) light emitting diodes (LED's) on low power to provide tail or marker function that increase to high power output for stop or turn functions. Available in both shallow and deep lenses for 12 or 24 volt applications.



Part#	Description
BEL710001	Red, shallow LED lens insert with (3) eyelets
BEL710002	Amber, shallow LED lens insert with (3) eyelets
BEL710005	Red, shallow LED lens insert with (3) eyelets, 24 volt
BEL710006	Amber, shallow LED lens insert with (3) eyelets, 24 volt

Part#	Description
BEL710011	Red, deep LED lens insert with (3) eyelets
BEL710012	Amber, deep LED lens insert (3) eyelets
BEL710015	Red, deep LED lens insert with (3) eyelets, 24 volt
BEL710016	Amber, deep LED lens insert with (3) eyelets, 24 volt

 <p><u>20 Series</u> Red, amber, silver license, and clear</p>	 <p><u>40, 45, 47, 70 & 80 Series</u> Clear shallow, red shallow, or amber shallow</p>	 <p><u>200 Series</u> Red. Clear, or amber</p>
 <p><u>50, 56, 57, 60 & 100 Series</u> Red shallow or amber shallow</p>	 <p><u>BEL920139</u> Clear, shallow back-up</p>	 <p><u>200V Series</u> Clear, red, or amber</p>
 <p><u>BEL920115</u> Clear, shallow</p>	 <p><u>BEL920142</u> Smoked, shallow</p> <p><u>BEL920143</u> Clear, shallow</p>	 <p><u>73 Series</u> Red, amber, and back-up</p>
 <p><u>BEL920115</u> Clear, deep back-up</p>	 <p><u>BEL920141</u> Red, deep license</p>	 <p><u>77 Series</u> Clear, red, or amber</p>
 <p><u>BEL920113</u> Red, deep license</p> <p><u>BEL920114</u> Amber, deep with window</p>	 <p><u>BEL920144</u> Red, deep</p> <p><u>BEL920145</u> Amber, deep</p> <p><u>BEL920388</u> Blue, deep</p> <p><u>BEL920140</u> Clear, deep dome</p>	 <p><u>BEL920154</u> Red emergency, Warning</p> <p><u>BEL920155</u> Amber emergency, warning</p>
 <p><u>BEL920111</u> Clear, red</p> <p><u>BEL920116</u> Red, deep</p> <p><u>BEL920117</u> Amber, deep</p> <p><u>BEL920451</u> Blue, deep</p>	 <p><u>47 Series Strobe and Beacon</u> High hat roof mounts available in red, amber, blue, or clear</p>	 <p><u>BEL920156</u> Red, arrow turn</p> <p><u>BEL920157</u> Amber, arrow turn</p>
 <p><u>65 Series</u> Clear, red or amber</p>	<p><i>For additional information please contact DBL</i></p>	

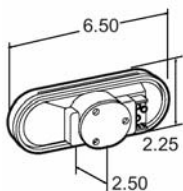
Trucklite

DBL stocks a wide variety of Trucklite gear and is adding more as our customers' needs grow and change. Listed are many of our most popular items among our customers. If you do not see what you need give us a call and we can get it for you.

Stop/Turn/Tail & Front/Park/Turn Oval Sealed

Part# TKL60202R—12v lamp (red)

The Super 60 oval sealed lamp features sonically sealed lens and housing with a high impact polycarbonate lens.



Stop/Turn/Tail & Front/Park/Turn 4" Sealed Lamp

Part# TKL40202R (Red S/T/T)

Part# TKL40202Y (Yellow F/P/T)

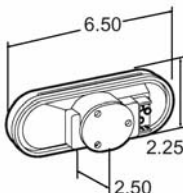
Made with a polycarbonate lens that resists heat and impact and designed with a shock mount that extends lamp life. Made for mounting in a 4-1/2" hole.



Side Turn & Marker/Clearance

Part# TKL60215Y (Yellow)

Features side indicator, marker/clearance and reflector functions as well as heavy duty shock mounted bulb. Narrow width facilitates horizontal mounting. Uses standard mounting holes.

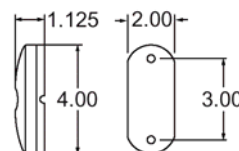


Shock/Mount Clearance Marker

Part# TKL1211R (Red)

Part# TKL1211Y (Yellow)

High impact Permastat housing protects against rust and corrosion, two bulb design allows one bulb to remain lit if other burns out and lamp meets requirements with one bulb.



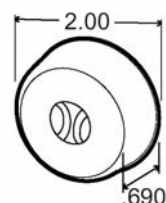
2" Sealed Marker Lamp

Part# TKL30200R (Red)

Part# TKL30200Y (Yellow)

Part# TKL30230Y (Yellow with ABS logo)

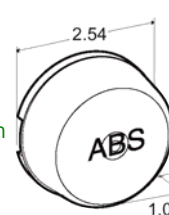
Featuring a polycarbonate lens and housing and a 12 volt bulb with a bulb life rated at 15,000 hours.



2-1/2" Sealed ABS Lamp

Part# TKL10212Y (Yellow)

Unique shock mount extends bulb life, polycarbonate lens and housing, 15,000 hour bulb life, and meets PC requirements on a 45° angle using all mounting devices.

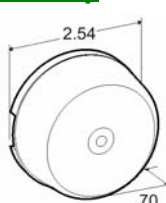


2-1/2" Sealed Reflectorized Clearance Lamp

Part# TKL10205R (Red)

Part# TKL10205Y (Yellow)

Sonically sealed lens and housing, high impact polycarbonate construction, and a 12 volt 15,000 hour rated bulb life.

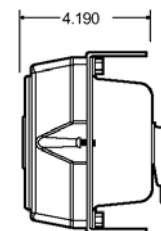
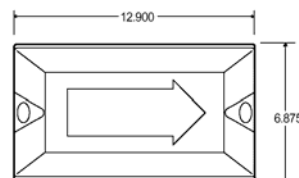


Wide Turn

Part# TKL40804 (Left Hand)

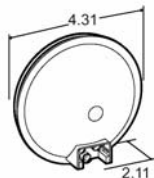
Part# TKL40805 (Right Hand)

Each signal features an enclosed kit containing lamps, grommets, bracket, universal lens, harness, and enclosed back.



4" Sealed Back-Up Lamp**Part# TKL40204**

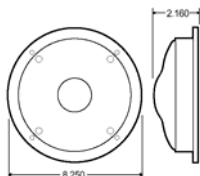
Polycarbonate lens and housing, 12v lamp, legal only for back-up function, not recommended for cabinet use.

**4" Sealed Dome Lamp****Part# TKL40203**

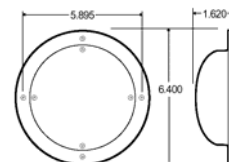
Clear polycarbonate lens and housing are vibration welded, bulb is shock-mounted for extended life, and ABS flange.

8" Dome Lamp**Part# TKL80354 (with switch)**

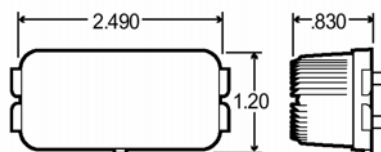
Push style on/off switch, chrome-plate steel housing, lens attaches to housing with four screws, uses flanged mounting to mount to a flat surface.

**6" Dome Lamp****Part# TKL80351****Part# TKL80350 (with switch)**

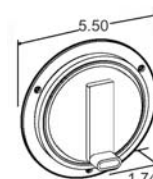
Clear polycarbonate lens, steel housing, and replaceable bulb. Screw hole diameter .234 and bolt hole diameter 5.895

**Rectangular Sealed License Lamp****Part# TKL15208**

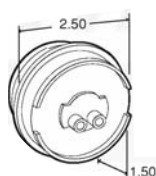
High impact polycarbonate sonically sealed lens and housing with 15,000 hour long life 12v bulb.

**LED 4" Sealed Stop/Turn/Tail****Part# TKL44322R3 (Red)**

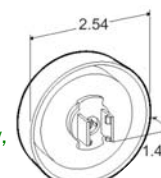
Designed for less current draw, resulting in increased battery and alternator life while allowing more power for other vehicle requirements. Extremely shock and vibration resistant.

**2" LED Marker/Clearance Lamp****Part# TKL30275R (Red)****Part# TKL30275Y (Yellow)**

Polycarbonate lens and housing, eight LED pattern, and SAE PC rated for combination clearance/marker applications.

**2-1/2" LED Sealed Marker/Clearance Lamp****Part# TKL10250R (Red)****Part# TKL10250Y (Yellow)**

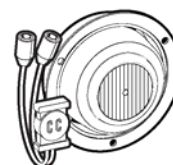
Polycarbonate lens and housing, 2 LED display, and electronics completely sealed in epoxy to resist corrosion.

**2-1/2" LED Sealed Marker/Clearance Lamp Kit****Part# TKL10279R (Red)****Part# TKL10279Y (Yellow)**

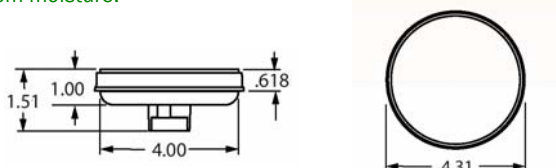
Polycarbonate lens and housing, eight LED pattern, and SAE PC rated for combination clearance/marker applications. Includes lamp and gray flange.

**2-1/2" LED Sealed Marker/Clearance Lamp****Part# TKL10051R (Red)****Part# TKL10051Y (Yellow)**

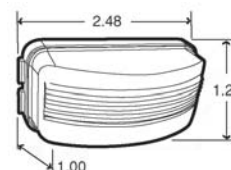
Polycarbonate lens and housing, 2 LED display, and electronics completely sealed in epoxy to resist corrosion. Includes lamp, flange, and plug.

**LED 4" Stop/Turn/Tail LED Lamp****Part# TKL4050**

Popular on owner/operator show trucks, uses standard right angle connection, a unique 24 LED array displays a full pattern of light, and epoxy encapsulated electronics prevent damage from moisture.

**LED Sealed License and Utility Lamp****Part# TKL15205**

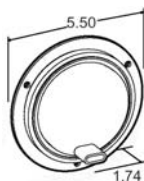
Hard-wired design with adaptor plug for quick changeover without rewiring, meets SAE J587 and European ECE Reg. 4. Lamp designed to fit brackets TKL00820, TKL15729, TKL15730, or TKL15732.



4" LED Back-Up Lamp

Part# TKL44236C

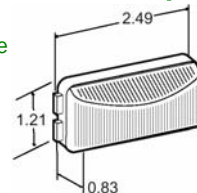
Permanently affixed gray flange mount, 27 LED display evenly distributes light for full and powerful light illumination.



LED Rectangular Sealed Marker/Clearance Lamp

Part# TKL15200R (Red, 12v)

Polycarbonate lens and housing, 16 gauge wire, fits in most narrow header rails, snap-lock tabs allow easy installation, long-life 15,000 hour bulb.

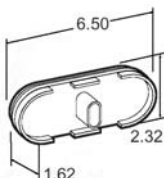


LED Oval Sealed Auxillary/Turn Lamp

Part# TKL60275Y (Yellow)

Part# TKL60080Y (Yellow/Directional)

Polycarbonate lens and housing, 26 LED display, and is a two function lamp. Electronics completely sealed in epoxy to resist corrosion.

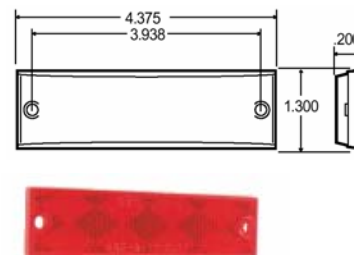


Compact Rectangular Lens

Part# 98003R (Red)

Part# 98003Y (Yellow)

Features acrylic lens and mounts with adhesive back or screws.

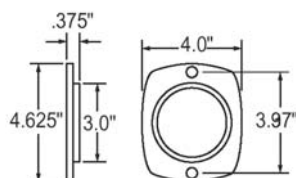


Trucklite 3" Screw Mount Reflectors

Part# 41R (Red)

Part# 41A (Yellow)

Flush type mount reflector and protective guard made of aluminum.

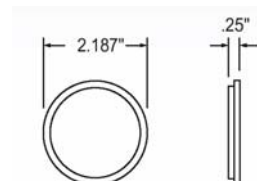


2-3/16" Round Stick-On

Part# 45R (Red)

Part# 45A (Yellow)

Acrylic lens and housing, permanent adhesive backing, mounts on any clean surface, smaller diameter for applications where space is limited.

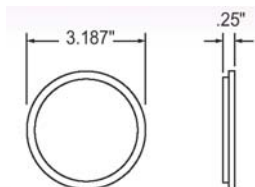


3-3/16" Round Stick-On

Part# 47R (Red)

Part# 47A (Yellow)

Acrylic lens and housing, permanent adhesive backing, mounts on any clean surface.

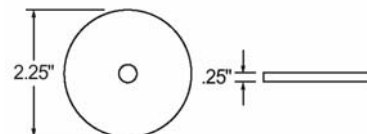


3" Center Mount Reflectors

Part# 98006R (Red)

Part# 98006Y (Yellow)

Fast, permanent installation with nail, screw or rivet. Designed to extra force in center (1/4" hole).



Turcklite Wide Turn Lens

Part# TKL99152

Features large outer lens for greater visibility. Contains two sealed back-up lamps with grommets for improved performance. Includes slotted bracket for ease of installation & adjustment.

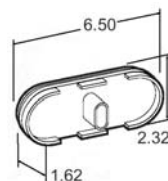


LED Oval Sealed Auxillary/Turn Lamp

Part# TKL60275Y (Yellow)

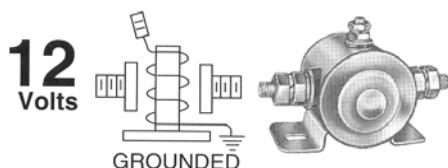
Part# TKL60080Y (Yellow/Directional)

Polycarbonate lens and housing, 26 LED display, and is a two function lamp. Electronics completely sealed in epoxy to resist corrosion.



Cole-Hersee Metal Solenoid**Part# ELE24106**

Steel housing, bracket mounting holes 5/16" x 19/32", 2-13/64" centers, 85 amps, and continuous duty.

**14-3 Coll Cord**

These tangle resistant black cords coil up to stay out of your way. Conductors are stranded copper with color-coded rubber insulation.

Part# ELE14-3CC**Part# ELE14-3SET (with Hubble Set)****16-3 Coll Cord****Part# ELE16-3CC****110 Volt Double Pole Electric Switch****Part# ELESWITCHDP**

Mounts in waterproof box on top of trailer for remote control pumping operations.

**Betts Toggle Switch with Boot****Part# BEL920039 (w/terminal screw)****Part# BEL920078 (w/pigtails)****Chelsea Sensing Switch****Part# ELE329202X (One Wire)****Part# ELE378301**

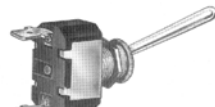
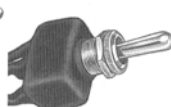
One and two wire pressure switches to operate indicator light on air shift PTO operations.

**Cole-Hersee Master Switch****Part# ELE2484**

Two 3/8" -20 copper stud, actuator is die cast, plated steel case, and fits panel up through 3/16".

**Toggle Switches****Part# ELE55021**

Single pole, double throw, momentary on/off toggle switch. Available in several different styles.

Standard handle:
1 1/16" (17.46mm)
long.Long handle:
1 1/2" (38.10mm)
long.Plasticized housing
with wire leads.**70 Amp Auto Reset Breaker****Part# ELECDLA**

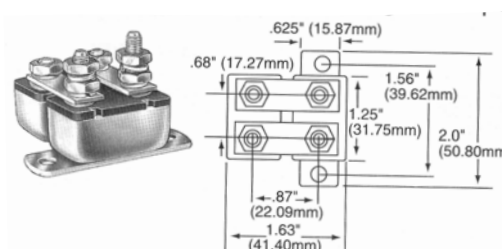
Black, polycarbonate body circuit breaker with two mounting ears, automatically resets itself once tripped.

**Standard Circuit Breakers & Fuses****Part# ELECB15.....15 Amp Circuit Breaker****Part# ELECB20.....20 Amp Circuit Breaker****Part# ELEMCB.....12v DC Circuit Breakers****Part# ELEMFU.....12v DC Fuse**

DBL stocks a complete line of fuses and circuit breakers needed for any truck or trailer electrical system.

**Cole-Hersee Circuit Breaker****Part# ELE3088-66**

Double breaker assemblies for higher amperage. Other circuit breakers available upon request.



70 Amp and 50 AMP Manual Reset Breaker

Part# **ELECDLM**

Black, polycarbonate body circuit breaker with two mounting ears and manual reset button.



Midland Junction Box

Part# **ELEBE22040**

Black polycarbonate box with brass connecting posts.



Trucklite Junction Box Kit

Part# **TKL50400** (surface Mount Assembly)

Part# **TKL50401** (Back plate Mount Assembly)

Contains junction box, junction box cap, terminal block, four filler plugs and mounting, and assembly screws.



Trucklite Junction Box Parts

Part# **TKL50800**.....Junction Box

Part# **TKL50808**.....Seven Prong Cover Kit

Part# **TKL50816**.....Junction Box Cap

Part# **TKL50820**.....Terminal Block

Part# **TKL50830**.....Filler Plugs and Mounting Screws

Part# **TKL50831**.....Adaptor Plate



DBL stocks a complete line of junction boxes and accessories for remote control operations on trucks and tankers.

Electric Box

Part# **ELE2X4BOX**.....2"x4" Electric Box

Part# **ELE2X4COVER**.....2"x4" Cover

Part# **ELESWITCHCOVER**.....2"x4" Switch Cover



Trailer Nose Box with Breaker

Part# **ELEBE26103**

Standard trailer nose box with one seven prong receptacle and space for second unit complete with emergency and supply gladhands.



Conduit Boxes

Part# **ELECBL-3/4**.....3/4" L Conduit Box

Part# **ELECBT-1/2**.....1/2" T Conduit Box

DBL stocks a complete line of conduit boxes used in tank and trailer applications.



Compression Fittings & Nuts

Part# **TKL50840**.....3/8" Compression Fitting

Part# **TKL50841**.....1/2" Compression Fitting

Part# **TKL50842**.....3/4" Compression Fitting

Part# **TKL50845**.....Jam Nut



Have a question? Call DBL and one of our knowledgeable staff will help answer any question you might have regarding lights and electrical systems.

Electrical & Wiring

Part Number	ITEM
BEL920013	Betts 108LS Double Contact Socket
BEL920015	Betts 108S Single Contact Socket
BEL920459	Betts Double Contact Shock Mount Socket
BEL820460	Betts Single Contact Shock Mount Socket
BEL920120	Betts Single Contact
BEL920124	Betts Single Contact Pigtail
BEL920125	Betts Single Contact Socket
BEL920148	Betts Double Contact
BEL920147	Betts Double Contact Pigtail
BEL920126	Betts Double Contact Socket
BEL920149	Betts Double Contact Grommet
BEL920307	Betts Shank Nipple
ELEBC	Butt Connector #8 and smaller
ELEBL	Battery Lug 1/0 +
ELECABLE1-0	Battery Cable
ELECABLE14-6	Six Wire Cable
ELECABLE16-3	Three wire cable
ELECABLE4	#4 Battery Cable
ELEHBLSET	Hubbell Plug and Connector Set
ELERT	Ring Terminal #8 and Smaller
ELEWIRE12	12 Gauge Electrical Wire
ELEWIRE14	14 Gauge Electrical Wire
MISACLIP10	5/8" Aluminum Clip
MISACLIP6	3/8" Aluminum Clip
MISACLIP8	1/2" Aluminum Clip
MISSLOOM	Shrink Plastic Loom Per Inch
MISSTUBE	Shrink Tube Per Inch
OFM18-7	7 Wire 18 Gauge Cable
TKL50202	Right Hand Stop/Turn/Tail Harness 156"
TKL50203	Left Hand Stop/Turn/Tail Harness 156"
TKL50208	Right Hand S/T/T and Side Marker Harness 96"
TKL50209	Left Hand S/T/T and Side Marker Harness 96"
TKL50210	Right Hand S/T/T and Side Marker Harness 192"
TKL50242	Right Hand S/T/T and Rear Marker Harness 96"
TKL50243	Left Hand S/T/T and Rear Marker Harness 96"
TKL50250	Left Hand S/S/T and Back-Up Harness 144"
TKL50251	Right Hand S/S/T and Back-Up Harness 144"
TKL50309	Two Plug Marker/Clearance Harness (brown/white) 168"
TKL50310	Single Plug Marker/Clearance Harness (black/white) 336"
TKL50342-0096	Right Hand Turn/Marker Harness (white/green/brown) 180"
TKL50343-0096	Left Hand Turn/Marker Harness (white/yellow/brown) 180"
TKL50344-0360	Right Hand Turn/Marker Harness (white/green/brown) 456"
TKL50345-0360	Left Hand Turn/Marker Harness (white/yellow/brown) 456"
TKL50376-0120	LED Single Plug Marker/Clearance Harness (Black/White) 336"
LED93745	LED Fit 'N Forget Adaptor
ELEABSE24	ABS 24" Sensor Extension Cable
ELEABSE78	2 M. ABS Extension Cable
ELEABSPC	ECU Power Cable
BEL920123	Betts Double Contact Shock Mount Socket
BEL920234	Betts Single Contact Shock Mount Socket

Wire Clips

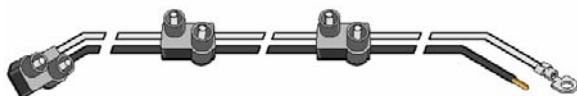
MISSCLIP4	1/4" Stainless Steel Wire Clip
MISSCLIP6	3/8" Stainless Steel Wire Clip
MISSCLIP8	1/2" Stainless Steel Wire Clip
MISSCLIP10	5/8" Stainless Steel Wire Clip
MISSCLIP12	3/4" Stainless Steel Wire Clip
MISSCLIP16	1" Stainless Steel Wire Clip
MISSCLIP24	1-1/2" Stainless Steel Wire Clip
MISSCLIP28	1-3/4" Stainless Steel Wire Clip

Identification Harness

Part# TKL93906 (6" Center)

Part# TKL93908 (9" Center)

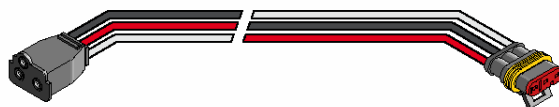
For use with incandescent lamp ID bar, GPT wire, and tin plated brass terminals, six inch centers, overall length 26".



LED Fit 'N Forget S/T/T Adaptor Plug

Part# TKL94706 (8")

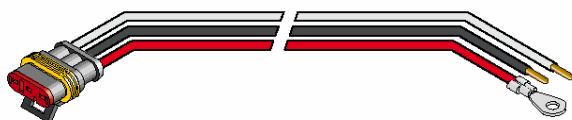
Keeps water, salt, and other corrosives from LED lamps, made of 16 gauge GPT wire, tin plated brass terminals, 8" in length.



LED Fit 'N Forget S/T/T Plug

Part# TKL94707 (8")

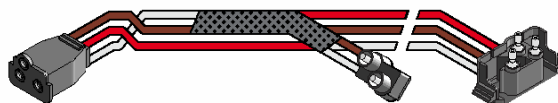
Keeps water, salt, and other corrosives from LED lamps, made of 16 gauge GPT wire, tin plated brass terminals, 8" in length.



Right Angle S/T/T Plugs with Adapter

Part# TKL94751

Converts one S/T/T plug into one S/T/T plug and one marker clearance plug. Made of 16 Gauge GPT wire, 12" in length.



LED Fit 'N Forget Pigtail Set

Part# TKL94862

Keeps water, salt, and other corrosives from LED lamps, made of 16 gauge GPT wire, and tin plated brass bullets and receptacles, approximately 5" in length.



Marker Clearance Plugs

Part# TKL94902

For use in areas with limited space, made of 16 gauge GPT wire, tin plated brass terminals, approximately 7" in length.



Marker Clearance Plugs

Part# TKL94916

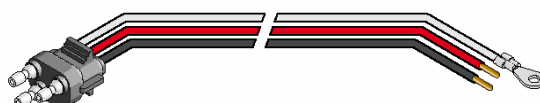
For use in areas with limited space, made of 16 gauge GPT wire, tin plated brass terminals, approximately 19" in length.



S/T/T Plugs

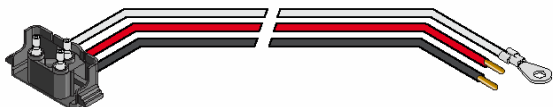
Part# TKL94926

For use with double contact sealed incandescent lamps, made of 16 gauge GPT wire, tin plated brass terminals, 11" in length.



Right Angle S/T/T Plug**Part# TKL94993**

For use with double contact sealed incandescent lamps, made of 16 gauge GPT wire, tin plated brass terminals, approximately 11" in length.

**Marker/Clearance Multiple Plug Harness****Part# TKL95451**

For use with bumpers and skirts, made of 16 gauge GPT wire, tin plated brass terminals, 7 plugs with 10" centers, overall length of 107"

**Marker/Clearance Multiple Plug Harness****Part# TKL95452**

For use with bumpers and skirts, made of 16 gauge GPT wire, tin plated brass terminals, 9 plugs with 10" centers, overall length of 127".

**LED Fit 'N Forget Marker/Clearance Plug Harness****Part# TKL95461**

For use with bumpers and skirt, made of 16 GPT wire, brass terminals, keeps out water, salt and other corrosives, 7 plugs with 10" centers, overall 107".

**Phillips Seven Prong Receptacle and Plug****Part# ELE15720.....7 Prong Receptacle****Part# ELE15730.....7 Prong Plug****Part# ELE15760.....Receptacle Cover****Electrical Receptacles and Plugs**

DBL stocks a complete line of single and multiple plug and receptacles to meet your needs

Part# ELE15-400.....4 Prong Receptacle**Part# ELE15-430.....4 Prong Plug****Phillips Six Prong Receptacle****Part# ELE15610**

Heavy duty die cast connector exchanges with all popular types of 6-way sockets. Screw tightened guillotine supports cable and allows for quicker installation.

**Single Pole Receptacle and Plug****Part# ELE15320.....Single Pole Receptacle****Part# ELE15335.....Single Pole Plug****Twist-Lock Connector & Plug****Part# ELEHBL7314C.....Twist-Lock Connector****Part# ELEHBL9965C.....Twist-Lock Plug**

Two 20 volt three prong connector and plugs for farm pick-up operations.

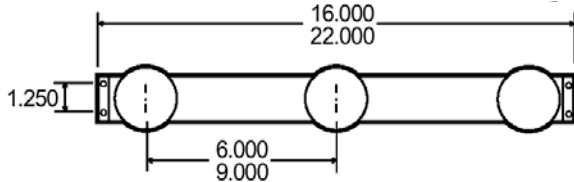
**Connector Set for****1/0+ Cable****Part# ELECONNSET**

Tweco twist lock connector set for 1/0+ or larger cable.



Trucklite Stainless Steel I.D. Bar

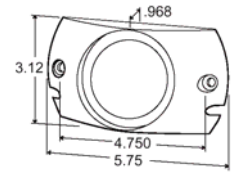
Features rugged stainless steel or black enameled ID bar. Lamps are mounted on 6" or 9" centers.



Branch Deflector Mounts

Part# TKL10725

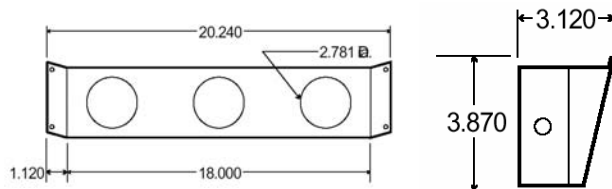
For 2-1/2" lamps, polycarbonate mount, high impact.



Trucklite Identification Bracket for 2-1/2" Lamps

Part# TKL10732

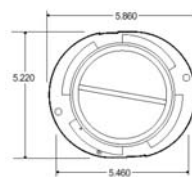
Stainless Steel bracket is angle cut to fit most tanker applications. Designed for mounting grommets requiring 2.871" hole.



Document Holder

Part# TKL97960

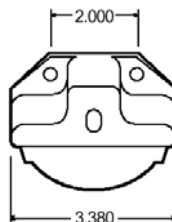
"ABS" plastic base, polycarbonate cover, designed for easy installation, convenient ease and removal of documents, moisture resistant.



Trucklite License Bracket

Part# TKL15729

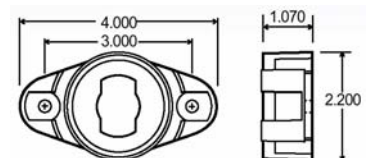
Features snap-fit mount for quick installation and easy replacement, may be surface mounted or used with bracket.



Cam-On Mounts

Part# TKL10728

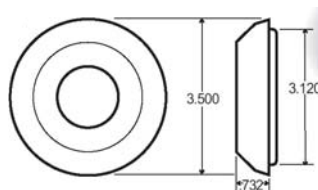
High impact plastic mount, branch deflector cams on 2" and 2-1/2" lamps, requires TKL94924 side entry plug.



Trucklite Diaphragm Grommet for 2-1/2" Lamps

Part# TKL10708

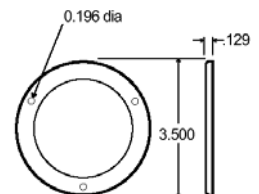
Rubber grommet, designed for edge lighting, adapts to surface thickness up to 1/4".



Trucklite 2-1/2" Mounting Cover

Part# TKL10715

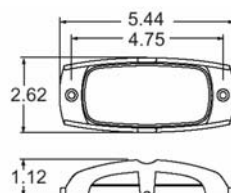
Designed to enhance appearance of lamps, flange cover offers improved theft resistance, polished stainless steel.



Trucklite Chrome Guard Safeguard

Part# TKL26720

Chrome plated die cast steel with mounting holes, used for lamp protection.



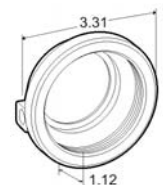
Trucklite Grommet Mounts for 2-1/2" Lamps

Part# TKL10700 (Open Back)

Part# TKL10702 (Closed Back)

Part# TKL10401 (Kit)

PVC grommet, thermal plastic rubber, wide grooved for panel thickness up to .250" Kit includes open back grommet and plug.

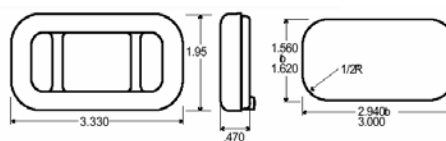


Trucklite Grommet Mounts for 2-1/2" Lamps**Parts# TKL30700 (Open Back)****Parts# TKL30702 (Closed Back)**

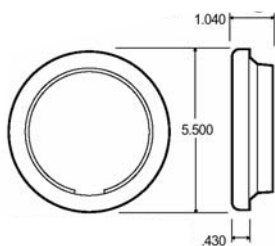
For additional information please contact DBL.

**Trucklite Grommet Mount****Part# TKL15702**

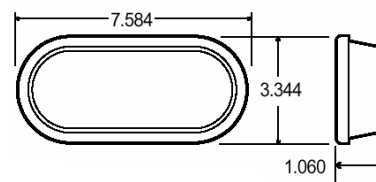
Flush mount vinyl PVC grommet, mounts in panel thickness up to 1/4", suitable for PC requirements on a 45° angle with incandescent lamps.

**Trucklite Mounting Grommet for 4" Lamps****Part# TKL40700**

PVC grommet, flush mount 4" diameter lamps in a 4-1/2" hole, designed for shock absorbercy.

**Trucklite Oval Mounting Grommet****Part# TKL60700**

For 60 Series products, allows flush mounting, PVC grommet, designed for shock absorbercy.

**Grommets- made of black Nitrile**

Part#	Item
MISGROMMET4.....	1/4" Grommet
MISGROMMET6.....	3/8" Grommet
MISGROMMET8.....	1/2" Grommet
MISGROMMET8W.....	1/2" Wide Grommet
MISGROMMET10.....	5/8" Grommet
MISGROMMET10W.....	5/8" Wide Grommet
MISGROMMET12.....	3/4" Wide Grommet
MISGROMMET16.....	1" Grommet
MISGROMMET24.....	1-1/2" Grommet





For Pricing

Call DBL Toll Free: 1-877-DBL-TANK

Monday thru Friday

7:00 AM - 5:00 PM

Saturdays

6:00 AM - 12:00 AM

**Or you can fax or email us at anytime and
we will get back to you ASAP**

Fax: 717-653-4106

Email: dbltank@dbltank.com