

## Hydraulics

|  |                |
|--|----------------|
| <b>Blackmer 2010 &amp; 2020 Hydrive Cooler.....</b>  | <b>129</b>     |
| <b>DRUM DH3.....</b>                                 | <b>130</b>     |
| <b>DRUM DH5.....</b>                                 | <b>130</b>     |
| <b>DRUM MH1 Hydradrive.....</b>                      | <b>130</b>     |
| <b>DRUM MH3 Hydradrive.....</b>                      | <b>130</b>     |
| <b>Hydraulic Fittings.....</b>                       | <b>131-140</b> |
| <b>Quick Connect Fittings.....</b>                   | <b>140</b>     |
| <b>Hydraulic Couplers.....</b>                       | <b>141</b>     |
| <b>Dust Plugs and Caps.....</b>                      | <b>141</b>     |
| <b>Hydralite Hose.....</b>                           | <b>142</b>     |
| <b>Flow Control Valve.....</b>                       | <b>142</b>     |
| <b>Stainless Steel Teflon Hose.....</b>              | <b>142</b>     |
| <b>Kuriyama Temp Tech Hose.....</b>                  | <b>142</b>     |
| <b>Alfatech Constant Working Pressure Hoses.....</b> | <b>142</b>     |

## **Blackmer 2010 & 2020 Hydrive Cooler**

### **Unique Design**

Compact size allows for easy installation on tractors and trucks with minimal space on chassis rails. The compact design with a low noise level centrifugal fan provides maximum performance and heat dissipation up to 13.5 HP (10kW) on 2010 models and 26 HP (20kW) on 2020 models.

### **Built for Performance**

Constructed from stainless steel materials to withstand the harsh environmental and operation conditions. The light weight cooler with a small hydraulic oil reservoir, reduces the concern and hazard of costly spills.

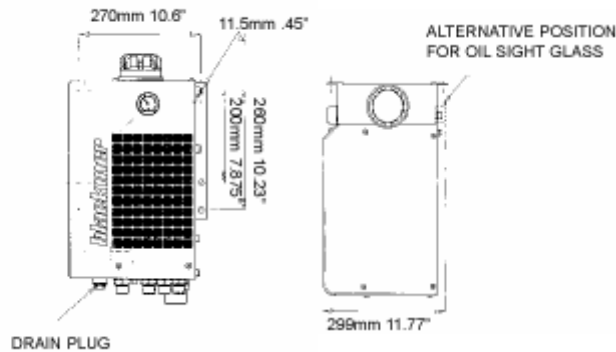
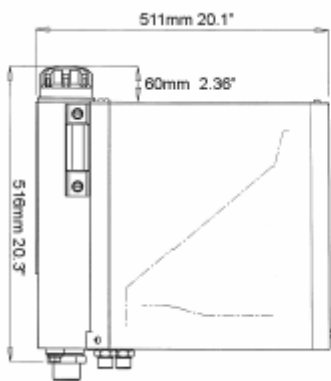
### **Maintenance Friendly**

The easy to read restriction gauge mounted on the front of the Hydrive indicates when the spin-on oil filter should be replaced. Normal hydraulic oil maintenance is made easy with the reservoir drain on the Hydrive tank.

For a full parts break out of replacement parts please refer to:

**Appendix M-11 thru M-13 for Hydrive 2010**

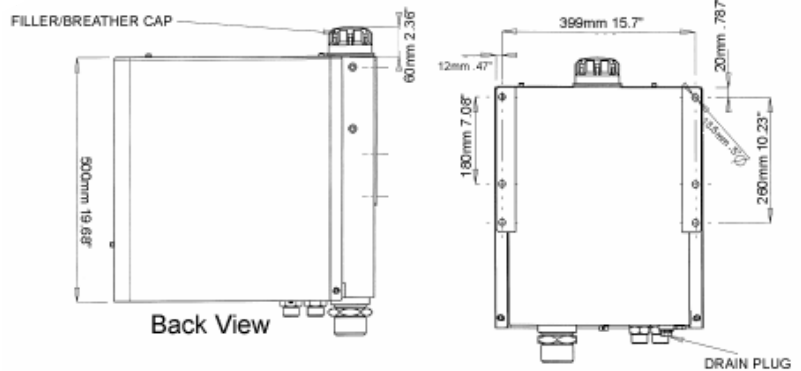
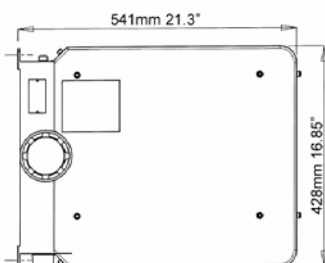
**Appendix M-14 thru M-16 for Hydrive 2020**



Hydrive 2010



Hydrive 2020



## DRUM Hydraulic Coolers



### **DRUM DH3**

A compact, lightweight high efficiency hydraulic control module for operation of product transfer systems. The Hydrapak DH3 controls oil temperature, hydraulic pressure, and oil friction. The DH3 allows for continuous high horsepower operation, while being easy to install and operate with virtually no maintenance.

For full parts breakout refer to **Appendix M-1**

### **DRUM DH5**

A compact, lightweight, high efficiency hydraulic control module for the operation of high horsepower and high flow mobile hydraulic drive systems. The DH5 controls oil temperature, hydraulic pressure, and oil filtration. The DH5 allows for continuous high horsepower operation, is easy to install, operates with virtually no maintenance, and weighs hundreds of pounds less than conventional reservoir type systems.

For full parts breakout refer to **Appendix M-3**



### **DRUM MH1 Hydrapak**



The MH1 is the smallest and lightest in the Drum Hydrapak product range. The MH1 Hydrapak along with a complete Drum Hydraulic system provides a cost-effective means of driving low horsepower product transfer pumps. The systems are ideal on bobtail delivery trucks for propane, fuel oil, bulk oil, and milk. Multiple pump vehicles and vehicles with hose reels also are ideal for the MH1 Hydrapak.

For full parts breakout refer to **Appendix M-5**

### **DRUM MH3 Hydrapak**

The MH3 is a pre-engineered, highly efficient, hydraulic oil cooling package. It includes the oil reservoir, cooler, return line filter and system relief valve. All components are designed into a small, lightweight, quiet and efficient machine.

For full parts breakout refer to **Appendix M-9**

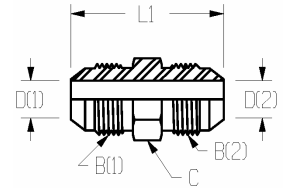


## Hydraulic Fittings

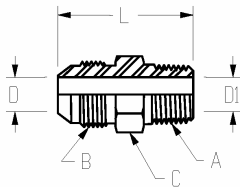
In this section our most popular hydraulic fittings are listed. If you do not see the hydraulic fitting you are looking for, call us and we can get it for you. DBL is regularly adding items to its stock to keep up with the demands of its customers.

### 2403 Male Tube Union

| PART NO       | TUBE OD   | B (1)                              | B (2)                              | L1   | C    | D (1) | D (2) |
|---------------|-----------|------------------------------------|------------------------------------|------|------|-------|-------|
| HYD2403-8-8   | 1/2 , 1/2 | 3/4-16                             | 3/4-16                             | 1.62 | 0.81 | 0.39  | 0.39  |
| HYD2403-12-8  | 3/4, 1/2  | 1 <sup>1</sup> / <sub>16</sub> -12 | 3/4-16                             | 1.95 | 1.13 | 0.61  | 0.39  |
| HYD2403-12-12 | 3/4, 3/4  | 1 <sup>1</sup> / <sub>16</sub> -12 | 1 <sup>1</sup> / <sub>16</sub> -12 | 2.16 | 1.13 | 0.61  | 0.61  |
| HYD2403-16-12 | 1, 3/4    | 1 <sup>5</sup> / <sub>16</sub> -12 | 1 <sup>1</sup> / <sub>16</sub> -12 | 2.20 | 1.38 | 0.84  | 0.61  |
| HYD2403-16-16 | 1, 1      | 1 <sup>5</sup> / <sub>16</sub> -12 | 1 <sup>5</sup> / <sub>16</sub> -12 | 2.25 | 1.38 | 0.84  | 0.84  |



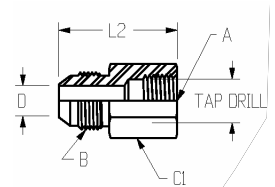
### 2404 Male Connector



| PART NO         | TUBE OD | B (1)                              | A                                | L    | C    | D    | D (1) |
|-----------------|---------|------------------------------------|----------------------------------|------|------|------|-------|
| HYD2404-8-6     | 1/2     | 3/4-16                             | 3/8-18                           | 1.53 | 0.81 | 0.39 | 0.41  |
| HYD2404-8-8     | 1/2     | 3/4-16                             | 1/2-14                           | 1.79 | 0.88 | 0.39 | 0.53  |
| HYD2404-8-8SS   | 1/2     | 3/4-16                             | 1/2-14                           | 1.79 | 0.88 | 0.39 | 0.53  |
| HYD2404-8-12    | 1/2     | 3/4-16                             | 3/4-14                           | 1.85 | 1.13 | 0.39 | 0.72  |
| HYD2404-12-8    | 3/4     | 1 <sup>1</sup> / <sub>16</sub> -12 | 1/2-14                           | 2.06 | 1.13 | 0.61 | 0.53  |
| HYD2404-12-12SS | 3/4     | 1 <sup>1</sup> / <sub>16</sub> -12 | 3/4-14                           | 2.06 | 1.13 | 0.61 | 0.72  |
| HYD2404-12-12   | 3/4     | 1 <sup>1</sup> / <sub>16</sub> -12 | 3/4-14                           | 2.06 | 1.13 | 0.61 | 0.72  |
| HYD2404-12-16   | 3/4     | 1 <sup>1</sup> / <sub>16</sub> -12 | 1-11 <sup>1</sup> / <sub>2</sub> | 2.25 | 1.38 | 0.61 | 0.94  |
| HYD2404-16-8    | 1       | 1 <sup>5</sup> / <sub>16</sub> -12 | 1/2-14                           | 2.11 | 1.38 | 0.84 | 0.53  |
| HYD2404-16-12   | 1       | 1 <sup>5</sup> / <sub>16</sub> -12 | 3/4-14                           | 2.11 | 1.38 | 0.84 | 0.72  |
| HYD2404-16-16   | 1       | 1 <sup>5</sup> / <sub>16</sub> -12 | 1-11 <sup>1</sup> / <sub>2</sub> | 2.30 | 1.38 | 0.84 | 0.94  |

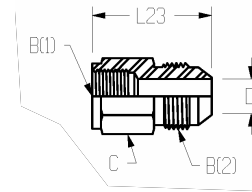
### 2405 Female Connector

| PART NO       | TUBE OD                       | B                                  | A   | L2   | C1   | D    | Tap Drill |
|---------------|-------------------------------|------------------------------------|---|------|------|------|-----------|
| HYD2405-8-8   | 1/2                           | 3/4-16                             | 1/2-14  | 1.79 | 1.13 | 0.39 | 0.70      |
| HYD2405-8-12  | 1/2                           | 3/4-16                             | 3/4-14  | 1.85 | 1.38 | 0.39 | 0.91      |
| HYD2405-12-8  | 3/4                           | 1 <sup>1</sup> / <sub>16</sub> -12 | 1/2-14  | 2.05 | 1.13 | 0.61 | 0.71      |
| HYD2405-12-12 | 3/4                           | 1 <sup>1</sup> / <sub>16</sub> -12 | 3/4-14  | 2.06 | 1.38 | 0.61 | 0.91      |
| HYD2405-12-16 | 3/4                           | 1 <sup>1</sup> / <sub>16</sub> -12 | 1-11 <sup>1</sup> / <sub>2</sub>                              | 2.30 | 1.63 | 0.61 | 1.14      |
| HYD2405-16-12 | 1                             | 1 <sup>5</sup> / <sub>16</sub> -12 | 3/4-14  | 2.12 | 1.38 | 0.84 | 0.91      |
| HYD2405-20-20 | 1 <sup>1</sup> / <sub>4</sub> | 1 <sup>5</sup> / <sub>8</sub> -12  | 1 <sup>1</sup> / <sub>4</sub> -11 <sup>1</sup> / <sub>2</sub> | 2.49 | 2.00 | 1.08 | 1.48      |

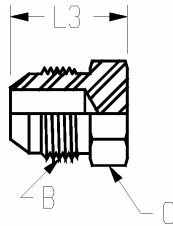


**2406 Reducing Adapter (One Piece)**

| PART NO       | TUBE OD | B (1)                              | B (2)                              | L23  | C    | D (1) |
|---------------|---------|------------------------------------|------------------------------------|------|------|-------|
| HYD2406-12-16 | 3/4, 1  | 1 <sup>1</sup> / <sub>16</sub> -12 | 1 <sup>5</sup> / <sub>16</sub> -12 | 1.61 | 1.38 | 0.61  |
| HYD2406-16-12 | 1, 3/4  | 1 <sup>5</sup> / <sub>16</sub> -12 | 1 <sup>1</sup> / <sub>16</sub> -12 | 1.82 | 1.50 | 0.61  |



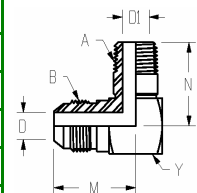
**2408 Male Tube Plug**



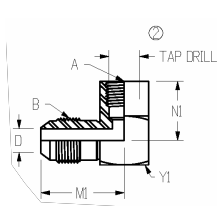
| PART NO    | TUBE OD                       | B                                  | L3   | C    |
|------------|-------------------------------|------------------------------------|------|------|
| HYD2408-6  | 3/8                           | 9/16-18                            | 0.84 | 0.63 |
| HYD2408-8  | 1/2                           | 3/4-16                             | 0.94 | 0.81 |
| HYD2408-10 | 5/8                           | 7/8-14                             | 1.10 | 0.94 |
| HYD2408-12 | 3/4                           | 1 <sup>1</sup> / <sub>16</sub> -12 | 1.28 | 1.13 |
| HYD2408-16 | 1                             | 1 <sup>5</sup> / <sub>16</sub> -12 | 1.33 | 1.38 |
| HYD2408-20 | 1 <sup>1</sup> / <sub>4</sub> | 1 <sup>5</sup> / <sub>8</sub> -12  | 1.45 | 1.69 |

**2501 90° Male Elbow**

| PART NO       | TUBE OD | B                                  | A                                | M    | N    | Y    | D    | D1   |
|---------------|---------|------------------------------------|----------------------------------|------|------|------|------|------|
| HYD2501-8-8   | 1/2     | 3/4-16                             | 1/2-14                           | 1.31 | 1.47 | 0.94 | 0.39 | 0.53 |
| HYD2501-12-12 | 3/4     | 1 <sup>1</sup> / <sub>16</sub> -12 | 3/4-14                           | 1.66 | 1.59 | 1.13 | 0.61 | 0.72 |
| HYD2501-12-16 | 3/4     | 1 <sup>1</sup> / <sub>16</sub> -12 | 1-11 <sup>1</sup> / <sub>2</sub> | 1.78 | 1.97 | 1.38 | 0.61 | 0.94 |
| HYD2501-16-12 | 1       | 1 <sup>5</sup> / <sub>16</sub> -12 | 3/4-14                           | 1.81 | 1.72 | 1.38 | 0.84 | 0.72 |
| HYD2501-16-16 | 1       | 1 <sup>5</sup> / <sub>16</sub> -12 | 1-11 <sup>1</sup> / <sub>2</sub> | 1.81 | 1.97 | 1.38 | 0.84 | 0.94 |



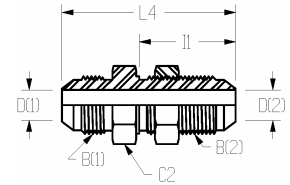
**2502 90° Female Elbow**



| PART NO       | TUBE OD | B                                  | A      | M1   | N1   | Y1   | D    | Tap Drill |
|---------------|---------|------------------------------------|--------|------|------|------|------|-----------|
| HYD2502-8-8   | 1/2     | 3/4-16                             | 1/2-14 | 1.03 | 0.66 | 0.63 | 0.13 | 0.33      |
| HYD2502-12-12 | 3/4     | 1 <sup>1</sup> / <sub>16</sub> -12 | 3/4-14 | 1.89 | 1.36 | 1.38 | 0.61 | 0.91      |
| HYD2502-16-12 | 1       | 1 <sup>5</sup> / <sub>16</sub> -12 | 3/4-14 | 2.05 | 1.36 | 1.38 | 0.84 | 0.91      |

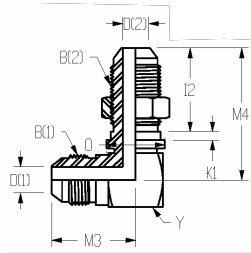
### 2700-LN Bulkhead Union

| PART NO         | TUBE OD  | B (1)                              | B (2)                              | L4   | I1   | C2   | D(1) | D(2) |
|-----------------|----------|------------------------------------|------------------------------------|------|------|------|------|------|
| HYD2700LN-8-8   | 1/2, 1/2 | 5/16-24                            | 5-16/24                            | 2.44 | 1.44 | 1.00 | 0.39 | 0.39 |
| HYD2700LN-10-10 | 5/8, 5/8 | 7/8-14                             | 7/8-14                             | 2.74 | 1.58 | 1.13 | 0.48 | 0.48 |
| HYD2700LN-12-12 | 3/4, 3/4 | 1 <sup>1</sup> / <sub>16</sub> -12 | 1 <sup>1</sup> / <sub>16</sub> -12 | 3.09 | 1.75 | 1.38 | 0.61 | 0.61 |
| HYD2700LN-16-12 | 1, 3/4   | 1 <sup>5</sup> / <sub>16</sub> -12 | 1 <sup>1</sup> / <sub>16</sub> -12 | 3.14 | 1.75 | 1.63 | 0.84 | 0.61 |



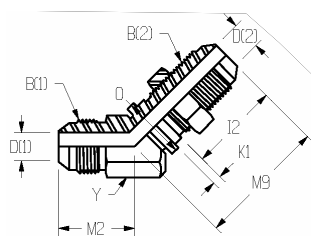
### 2701-LN 90° Bulkhead Elbow

| PART NO         | TUBE OD  | B (1)                              | B (2)                              | M4   | M4   | I2   | K1   | O    | Y    | D(1) | D(2) |
|-----------------|----------|------------------------------------|------------------------------------|------|------|------|------|------|------|------|------|
| HYD2701LN-8-6   | 1/2, 3/8 | 3/4-16                             | 9/16-18                            | 1.36 | 1.91 | 1.09 | 0.09 | 0.69 | 0.81 | 0.39 | 0.30 |
| HYD2701LN-10-10 | 5/8, 5/8 | 7/8-14                             | 7/8-14                             | 1.56 | 2.39 | 1.39 | 0.13 | 1.00 | 0.94 | 0.48 | 0.48 |
| HYD2701LN-12-12 | 3/4, 3/4 | 1 <sup>1</sup> / <sub>16</sub> -12 | 1 <sup>1</sup> / <sub>16</sub> -12 | 1.78 | 2.67 | 1.56 | 0.13 | 1.19 | 1.13 | 0.61 | 0.61 |
| HYD2700LN-16-16 | 1, 1     | 1 <sup>5</sup> / <sub>16</sub> -12 | 1 <sup>5</sup> / <sub>16</sub> -12 | 1.94 | 2.80 | 1.56 | 0.13 | 1.44 | 1.38 | 0.84 | 0.84 |

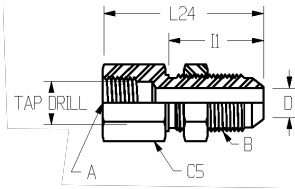


### 2702-LN 45° Bulkhead Elbow

| PART NO         | TUBE OD  | B (1)                              | B (2)                              | M2   | M9   | I2   | K1   | O    | Y    | D(1) | D(2) |
|-----------------|----------|------------------------------------|------------------------------------|------|------|------|------|------|------|------|------|
| HYD2702LN-8-8   | 1/2, 1/2 | 3/4-16                             | 3/4-16                             | 0.98 | 1.94 | 1.25 | 0.13 | 0.88 | 0.81 | 0.39 | 0.39 |
| HYD2702LN-10-10 | 5/8, 5/8 | 7/8-14                             | 7/8-14                             | 1.11 | 2.17 | 1.39 | 0.13 | 1.00 | 0.94 | 0.48 | 0.48 |
| HYD2702LN-12-12 | 3/4, 3/4 | 1 <sup>1</sup> / <sub>16</sub> -12 | 1 <sup>1</sup> / <sub>16</sub> -12 | 1.28 | 2.44 | 1.56 | 0.13 | 1.19 | 1.13 | 0.61 | 0.61 |
| HYD2702LN-16-16 | 1, 1     | 1 <sup>5</sup> / <sub>16</sub> -12 | 1 <sup>5</sup> / <sub>16</sub> -12 | 1.47 | 2.53 | 1.56 | 0.13 | 1.44 | 1.38 | 0.84 | 0.84 |



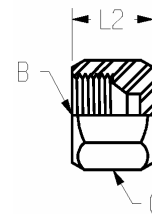
**2706-LN Male Pipe/Bulkhead**



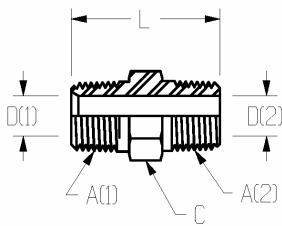
| PART NO         | TUBE OD | A                                | B                                  | L25  | I1   | C2   | D1   | D    |
|-----------------|---------|----------------------------------|------------------------------------|------|------|------|------|------|
| HYD2706LN-12-12 | 3/4     | 3/4-14                           | 1 <sup>1</sup> / <sub>16</sub> -12 | 2.92 | 1.75 | 1.38 | 0.72 | 0.61 |
| HYD2706LN-16-16 | 1       | 1-11 <sup>1</sup> / <sub>2</sub> | 1 <sup>5</sup> / <sub>16</sub> -12 | 3.11 | 1.75 | 1.63 | 0.94 | 0.84 |

**304-C Cap Nut**

| PART NO     | TUBE OD | B                                  | L2   | C    |
|-------------|---------|------------------------------------|------|------|
| HYD304-C-6  | 3/8     | 9/16-18                            | 0.63 | 0.69 |
| HYD304-C-8  | 1/2     | 3/4-16                             | 0.75 | 0.88 |
| HYD304-C-10 | 5/8     | 7/8-14                             | 0.84 | 1.00 |
| HYD304-C-12 | 3/4     | 1 <sup>1</sup> / <sub>16</sub> -12 | 0.91 | 1.25 |
| HYD304-C-16 | 1       | 1 <sup>5</sup> / <sub>16</sub> -12 | 1.02 | 1.50 |



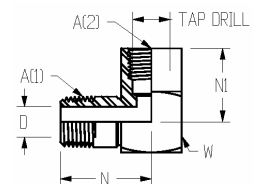
**5404 Hexagon Pipe Nipple**



| PART NO       | A(1)                             | A(2)   | L    | C    | D (1) | D (2) |
|---------------|----------------------------------|--------|------|------|-------|-------|
| HYD5404-12-8  | 3/4-14                           | 1/2-14 | 1.96 | 1.13 | 0.72  | 0.53  |
| HYD5404-16-12 | 1-11 <sup>1</sup> / <sub>2</sub> | 3/4-14 | 2.15 | 1.38 | 0.94  | 0.72  |

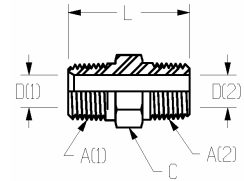
**5502 90° Street Elbow**

| PART NO       | A(1)                             | A(2)                             | N    | N1   | W    | D    | Tap Drill |
|---------------|----------------------------------|----------------------------------|------|------|------|------|-----------|
| HYD5502-8-8   | 1/2-14                           | 1/2-14                           | 1.47 | 1.23 | 1.13 | 0.53 | 0.70      |
| HYD5502-12-12 | 3/4-14                           | 3/4-14                           | 1.59 | 1.36 | 1.38 | 0.72 | 0.91      |
| HYD5502-16-16 | 1-11 <sup>1</sup> / <sub>2</sub> | 1-11 <sup>1</sup> / <sub>2</sub> | 1.97 | 1.62 | 1.63 | 0.94 | 1.14      |



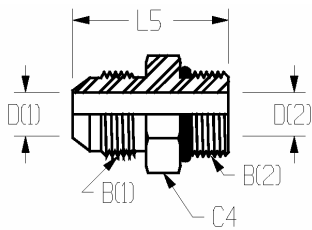
### 5503 45° Street Elbow

| PART #        | A(1)                             | A(2)                             | N4   | N3   | W    | D    | Tap Drill |
|---------------|----------------------------------|----------------------------------|------|------|------|------|-----------|
| HYD5503-8-8   | 1/2-14                           | 1/2-14                           | 1.34 | 0.91 | 1.13 | 0.53 | 0.70      |
| HYD5503-12-12 | 3/4-14                           | 3/4-14                           | 1.38 | 0.97 | 1.38 | 0.72 | 0.91      |
| HYD5503-16-16 | 1-11 <sup>1</sup> / <sub>2</sub> | 1-11 <sup>1</sup> / <sub>2</sub> | 1.72 | 1.12 | 1.63 | 0.94 | 1.14      |



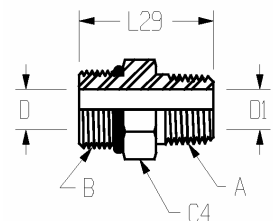
### 6400 Straight Thread Adapter

| PART NO       | TUBE OD                       | B (1)                              | B (2)                              | L5   | C4   | D (1) | D (2) |
|---------------|-------------------------------|------------------------------------|------------------------------------|------|------|-------|-------|
| HYD6400-6-6   | 3/8                           | 9/16-18                            | 9/16-18                            | 1.30 | 0.69 | 0.30  | 0.30  |
| HYD6400-8-8   | 1/2                           | 3/4-16                             | 3/4-16                             | 1.48 | 0.88 | 0.39  | 0.39  |
| HYD6400-8-10  | 1/2                           | 3/4-16                             | 7/8-14                             | 1.60 | 1.00 | 0.39  | 0.48  |
| HYD6400-8-12  | 1/2                           | 3/4-16                             | 1 <sup>1</sup> / <sub>16</sub> -12 | 1.76 | 1.25 | 0.39  | 0.61  |
| HYD6400-8-16  | 1/2                           | 3/4-16                             | 1 <sup>5</sup> / <sub>16</sub> -12 | 1.79 | 1.50 | 0.39  | 0.84  |
| HYD6400-10-8  | 5/8                           | 7/8-14                             | 3/4-16                             | 1.64 | 0.94 | 0.48  | 0.39  |
| HYD6400-10-12 | 5/8                           | 7/8-14                             | 1 <sup>1</sup> / <sub>16</sub> -12 | 1.86 | 1.25 | 0.48  | 0.61  |
| HYD6400-12-8  | 3/4                           | 1 <sup>1</sup> / <sub>16</sub> -12 | 3/4-16                             | 1.94 | 1.13 | 0.61  | 0.39  |
| HYD6400-12-10 | 3/4                           | 1 <sup>1</sup> / <sub>16</sub> -12 | 7/8-14                             | 1.88 | 1.13 | 0.61  | 0.48  |
| HYD6400-12-12 | 3/4                           | 1 <sup>1</sup> / <sub>16</sub> -12 | 1 <sup>1</sup> / <sub>16</sub> -12 | 1.97 | 1.25 | 0.61  | 0.61  |
| HYD6400-12-16 | 3/4                           | 1 <sup>1</sup> / <sub>16</sub> -12 | 1 <sup>5</sup> / <sub>16</sub> -12 | 1.99 | 1.50 | 0.61  | 0.84  |
| HYD6400-16-8  | 1                             | 1 <sup>5</sup> / <sub>16</sub> -12 | 3/4-16                             | 2.01 | 1.38 | 0.84  | 0.39  |
| HYD6400-16-12 | 1                             | 1 <sup>5</sup> / <sub>16</sub> -12 | 1 <sup>1</sup> / <sub>16</sub> -12 | 2.04 | 1.38 | 0.84  | 0.61  |
| HYD6400-16-16 | 1                             | 1 <sup>5</sup> / <sub>16</sub> -12 | 1 <sup>5</sup> / <sub>16</sub> -12 | 2.04 | 1.50 | 0.84  | 0.84  |
| HYD6400-16-20 | 1                             | 1 <sup>5</sup> / <sub>16</sub> -12 | 1 <sup>5</sup> / <sub>8</sub> -12  | 2.12 | 1.88 | 0.84  | 1.08  |
| HYD6400-20-16 | 1 <sup>1</sup> / <sub>4</sub> | 1 <sup>5</sup> / <sub>8</sub> -12  | 1 <sup>5</sup> / <sub>16</sub> -12 | 2.33 | 1.69 | 1.08  | 0.84  |
| HYD6400-20-20 | 1 <sup>1</sup> / <sub>4</sub> | 1 <sup>5</sup> / <sub>8</sub> -12  | 1 <sup>5</sup> / <sub>8</sub> -12  | 2.17 | 1.88 | 1.08  | 1.08  |
| HYD6400-20-24 | 1 <sup>1</sup> / <sub>4</sub> | 1 <sup>5</sup> / <sub>8</sub> -12  | 1 <sup>7</sup> / <sub>8</sub> -12  | 2.24 | 2.13 | 1.08  | 1.31  |
| HYD6400-24-16 | 1 <sup>1</sup> / <sub>2</sub> | 1 <sup>7</sup> / <sub>8</sub> -12  | 1 <sup>5</sup> / <sub>16</sub> -12 | 2.53 | 2.00 | 1.31  | 0.84  |
| HYD6400-24-20 | 1 <sup>1</sup> / <sub>2</sub> | 1 <sup>7</sup> / <sub>8</sub> -12  | 1 <sup>5</sup> / <sub>8</sub> -12  | 2.53 | 2.00 | 1.31  | 1.08  |



### 6401 Straight Thread/Male Pipe Adapter

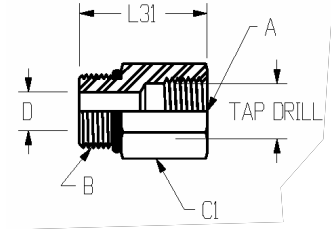
| PART NO       | B                                  | A      | L29  | C4   | D    | D(1) |
|---------------|------------------------------------|--------|------|------|------|------|
| HYD6401-12-12 | 1 <sup>1</sup> / <sub>16</sub> -12 | 3/4-14 | 1.73 | 1.25 | 0.61 | 0.72 |



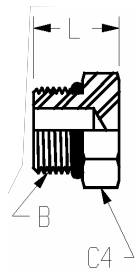


**6405 Straight Thread/Female Pipe Adapter**

| PART NO       | B                                  | A                                | L31  | C1   | D    | Tap Drill |
|---------------|------------------------------------|----------------------------------|------|------|------|-----------|
| HYD6405-8-8   | 3/4-16                             | 1/2-14                           | 1.63 | 1.13 | 0.39 | 0.70      |
| HYD6405-8-12  | 3/4-16                             | 3/4-14                           | 1.63 | 1.38 | 0.39 | 0.91      |
| HYD6405-12-8  | 1 <sup>1</sup> / <sub>16</sub> -12 | 1/2-14                           | 1.50 | 1.25 | 0.61 | 0.70      |
| HYD6405-12-12 | 1 <sup>1</sup> / <sub>16</sub> -12 | 3/4-14                           | 1.59 | 1.38 | 0.61 | 0.91      |
| HYD6405-12-16 | 1 <sup>1</sup> / <sub>16</sub> -12 | 1-11 <sup>1</sup> / <sub>2</sub> | 1.95 | 1.63 | 0.61 | 1.14      |
| HYD6405-16-12 | 1 <sup>5</sup> / <sub>16</sub> -12 | 3/4-14                           | 1.62 | 1.50 | 0.84 | 0.91      |
| HYD6405-16-16 | 1 <sup>5</sup> / <sub>16</sub> -12 | 1-11 <sup>1</sup> / <sub>2</sub> | 1.90 | 1.63 | 0.84 | 1.14      |



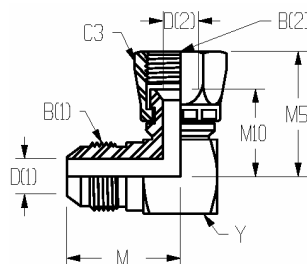
**6408 Hexagon Head O-Ring Boss Plug**



| PART NO    | B                                  | L    | C4   |
|------------|------------------------------------|------|------|
| HYD6408-6  | 9/16-18                            | 0.73 | 0.69 |
| HYD6408-8  | 3/4-16                             | 0.80 | 0.88 |
| HYD6408-10 | 7/8-14                             | 0.93 | 1.00 |
| HYD6408-12 | 1 <sup>1</sup> / <sub>16</sub> -12 | 1.09 | 1.25 |
| HYD6408-16 | 1 <sup>5</sup> / <sub>16</sub> -12 | 1.12 | 1.50 |
| HYD6408-20 | 1 <sup>5</sup> / <sub>8</sub> -12  | 1.20 | 1.88 |
| HYD6408-24 | 1 <sup>7</sup> / <sub>8</sub> -12  | 1.27 | 2.13 |

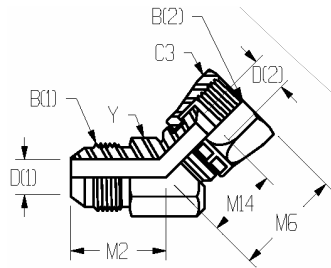
**6500 90° Swivel Elbow**

| PART NO       | TUBE OD   | B (1)                              | B (2)                              | M    | M5   | M10  | C3   | Y    | D(1) | D(2) |
|---------------|---|------------------------------------|------------------------------------|------|------|------|------|------|------|------|
| HYD6500-6-6   | 3/8, 3/8  | 9/16-18                            | 9/16-18                            | 1.06 | 1.25 | 0.88 | 0.69 | 0.63 | 0.30 | 0.30 |
| HYD6500-8-8   | 1/2, 1/2  | 3/4-16                             | 3/4-16                             | 1.25 | 1.38 | 0.96 | 0.88 | 0.81 | 0.39 | 0.39 |
| HYD6500-10-10 | 5/8, 5/8  | 7/8-14                             | 7/8-14                             | 1.45 | 1.62 | 1.12 | 1.00 | 0.94 | 0.48 | 0.48 |
| HYD6500-12-12 | 3/4, 3/4  | 1 <sup>1</sup> / <sub>16</sub> -12 | 1 <sup>1</sup> / <sub>16</sub> -12 | 1.66 | 1.75 | 1.19 | 1.25 | 1.13 | 0.61 | 0.61 |
| HYD6500-16-12 | 1, 3/4  | 1 <sup>5</sup> / <sub>16</sub> -12 | 1 <sup>1</sup> / <sub>16</sub> -12 | 1.81 | 1.88 | 1.31 | 1.25 | 1.38 | 0.84 | 0.61 |
| HYD6500-20-20 | 1 <sup>1</sup> / <sub>4</sub> , 1 <sup>1</sup> / <sub>4</sub> | 1 <sup>5</sup> / <sub>8</sub> -12  | 1 <sup>5</sup> / <sub>8</sub> -12  | 2.06 | 2.31 | 1.68 | 2.00 | 1.75 | 1.08 | 1.08 |



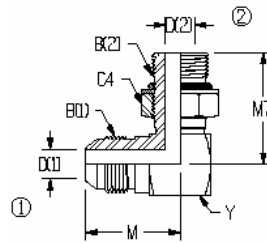
### 6502 45° Swivel Elbow

| PART NO       | TUBE OD   | B (1)                              | B (2)                              | M2   | M6   | M14  | C3   | Y    | D(1) | D(2) |
|---------------|---|------------------------------------|------------------------------------|------|------|------|------|------|------|------|
| HYD6502-8-8   | 1/2, 1/2  | 3/4-16                             | 3/4-16                             | 0.98 | 1.28 | 0.86 | 0.88 | 0.81 | 0.39 | 0.39 |
| HYD6502-10-10 | 5/8, 5/8  | 7/8-14                             | 7/8-14                             | 1.11 | 1.44 | 0.94 | 1.00 | 0.94 | 0.48 | 0.48 |
| HYD6502-12-12 | 3/4, 3/4  | 1 <sup>1</sup> / <sub>16</sub> -12 | 1 <sup>1</sup> / <sub>16</sub> -12 | 1.28 | 1.50 | 0.94 | 1.25 | 1.13 | 0.61 | 0.61 |
| HYD6502-16-16 | 1, 1  | 1 <sup>5</sup> / <sub>16</sub> -12 | 1 <sup>5</sup> / <sub>16</sub> -12 | 1.47 | 1.75 | 1.16 | 1.50 | 1.38 | 0.84 | 0.84 |
| HYD6502-20-20 | 1 <sup>1</sup> / <sub>4</sub> , 1 <sup>1</sup> / <sub>4</sub> | 1 <sup>5</sup> / <sub>16</sub> -12 | 1 <sup>5</sup> / <sub>16</sub> -12 | 1.59 | 1.96 | 1.34 | 2.00 | 1.75 | 1.08 | 1.08 |
| HYD6502-24-24 | 1 <sup>1</sup> / <sub>2</sub> , 1 <sup>1</sup> / <sub>2</sub> | 1 <sup>7</sup> / <sub>8</sub> -14  | 1 <sup>7</sup> / <sub>8</sub> -14  | 1.78 | 2.25 | 1.52 | 2.25 | 2.00 | 1.31 | 1.31 |



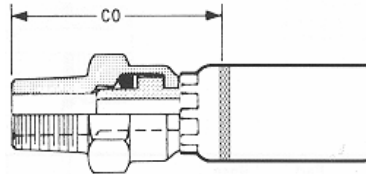
### 6801 90° Straight Thread

| PART NO       | TUBE OD | B (1)                              | B (2)                              | M    | M7   | C4   | Y    | D(1) | D(2) |
|---------------|---------|------------------------------------|------------------------------------|------|------|------|------|------|------|
| HYD6801-8-8   | 1/2     | 3/4-16                             | 3/4-16                             | 1.25 | 1.45 | 0.88 | 0.81 | 0.39 | 0.39 |
| HYD6801-8-12  | 1/2     | 3/4-16                             | 1 <sup>1</sup> / <sub>16</sub> -12 | 1.40 | 1.94 | 1.25 | 1.13 | 0.39 | 0.61 |
| HYD6801-12-8  | 3/4     | 1 <sup>1</sup> / <sub>16</sub> -12 | 3/4-16                             | 1.66 | 1.61 | 0.88 | 1.13 | 0.61 | 0.39 |
| HYD6801-12-10 | 3/4     | 1 <sup>1</sup> / <sub>16</sub> -12 | 7/8-14                             | 1.66 | 1.80 | 1.00 | 1.13 | 0.61 | 0.48 |
| HYD6801-12-12 | 3/4     | 1 <sup>1</sup> / <sub>16</sub> -12 | 1 <sup>1</sup> / <sub>16</sub> -12 | 1.66 | 1.94 | 1.25 | 1.13 | 0.61 | 0.61 |
| HYD6801-12-16 | 3/4     | 1 <sup>1</sup> / <sub>16</sub> -12 | 1 <sup>5</sup> / <sub>16</sub> -12 | 1.78 | 2.05 | 1.50 | 1.38 | 0.61 | 0.84 |
| HYD6801-16-12 | 1       | 1 <sup>5</sup> / <sub>16</sub> -12 | 1 <sup>1</sup> / <sub>16</sub> -12 | 1.81 | 2.06 | 1.25 | 1.38 | 0.84 | 0.61 |
| HYD6801-16-16 | 1       | 1 <sup>5</sup> / <sub>16</sub> -12 | 1 <sup>5</sup> / <sub>16</sub> -12 | 1.81 | 2.05 | 1.50 | 1.38 | 0.84 | 0.84 |

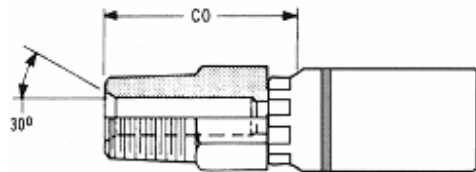


**NPTF Swivel Male Stem**

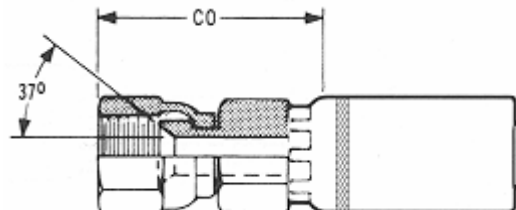
| PART NO   | Hose ID | Thread  | Hex                            | Stem ID | Fitting Length | CO Cutoff |
|-----------|---------|---|--------------------------------|---------|----------------|-----------|
| HYDC8MPS  | 1/2     | 1/2 -14   | 1                              | .406    | 2.955          | 1.800     |
| HYDC12MPS | 3/4     | 3/4 -14   | 1 <sup>5</sup> / <sub>16</sub> | .625    | 3.135          | 1.885     |
| HYDC16MPS | 1       | 1 <sup>1</sup> / <sub>4</sub> -11 <sup>1</sup> / <sub>2</sub> | 1 <sup>5</sup> / <sub>8</sub>  | .937    | 4.395          | 2.480     |

**NPTF Solid Male Stem**

| PART NO  | Hose ID | Thread  | Hex                            | Stem ID | Fitting Length | CO Cutoff |
|----------|---------|---------|--------------------------------|---------|----------------|-----------|
| HYDC8MP  | 1/2     | 1/2 -18 | 7/8                            | .406    | 2.472          | 1.312     |
| HYDC12MP | 3/4     | 3/4 -14 | 1 <sup>1</sup> / <sub>16</sub> | .625    | 2.676          | 1.526     |

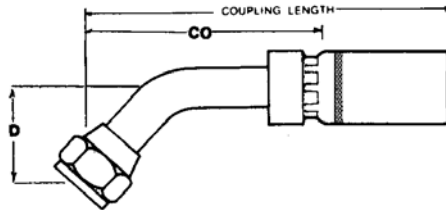
**JIC 37° Swivel Female Stem**

| PART NO    | Hose ID | Thread                             | Stem Hex                       | Nut Hex                        | Stem ID | Fitting Length | CO Cutoff |
|------------|---------|------------------------------------|--------------------------------|--------------------------------|---------|----------------|-----------|
| HYDC6FJ    | 3/8     | 9/16 -18                           | 11/16                          | 3/4                            | .296    | 2.030          | 1.105     |
| HYDC86FJ   | 1/2     | 9/16 -18                           | 13/16                          | 3/4                            | .296    | 2.340          | 1.165     |
| HYDC8FJ    | 1/2     | 3/4 -16                            | 13/16                          | 7/8                            | .406    | 2.470          | 1.310     |
| HYDC10FJ   | 5/8     | 7/8 -14                            | 1                              | 1 <sup>1</sup> / <sub>16</sub> | .500    | 2.565          | 1.405     |
| HYDC1210FJ | 3/4     | 7/8 -14                            | 1 <sup>1</sup> / <sub>16</sub> | 1 <sup>1</sup> / <sub>16</sub> | .500    | 2.745          | 1.490     |
| HYDC12FJ   | 3/4     | 1 <sup>1</sup> / <sub>16</sub> -12 | 1 <sup>1</sup> / <sub>16</sub> | 1 <sup>1</sup> / <sub>4</sub>  | .625    | 2.810          | 1.570     |
| HYDC1612FJ | 1       | 1 <sup>1</sup> / <sub>16</sub> -12 | 1 <sup>3</sup> / <sub>8</sub>  | 1 <sup>1</sup> / <sub>4</sub>  | .718    | 3.040          | 1.580     |
| HYDC16FJ   | 1       | 1 <sup>5</sup> / <sub>16</sub> -12 | 1 <sup>3</sup> / <sub>8</sub>  | 1 <sup>1</sup> / <sub>2</sub>  | .844    | 3.175          | 1.720     |



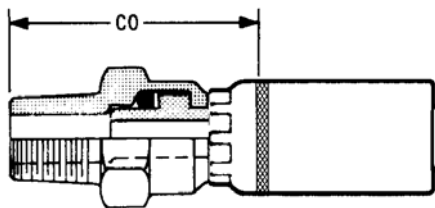
**JIC 37° Female Stem-45° Bent Tube-Medium Drop**

| PART NO    | Hose ID | Thread                             | Hex                           | D Drop | Fitting Length | CO Cutoff |
|------------|---------|------------------------------------|-------------------------------|--------|----------------|-----------|
| HYDC8FJ45  | 1/2     | 3/4-16                             | 7/8                           | .690   | 3.240          | 2.200     |
| HYDC12FJ45 | 3/4     | 1 <sup>1</sup> / <sub>16</sub> -12 | 1 <sup>1</sup> / <sub>4</sub> | 1.060  | 4.020          | 2.900     |
| HYDC16FJ45 | 1       | 1 <sup>5</sup> / <sub>16</sub> -12 | 1 <sup>1</sup> / <sub>2</sub> | 1.160  | 4.780          | 3.310     |



**NPTF Swivel Male Stem**

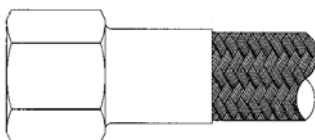
| PART NO    | Hose ID | Thread                           | Hex                            | Stem ID | Fitting Length | CO Cutoff |
|------------|---------|----------------------------------|--------------------------------|---------|----------------|-----------|
| HYDC8FJ90  | 1/2     | 3/8-18                           | 1                              | .406    | 2.755          | 1.605     |
| HYDC12FJ90 | 3/4     | 1/2-14                           | 1 <sup>5</sup> / <sub>16</sub> | .625    | 3.125          | 1.890     |
| HYDC16FJ90 | 1       | 1-11 <sup>1</sup> / <sub>2</sub> | 1 <sup>5</sup> / <sub>8</sub>  | .844    | 3.760          | 2.300     |



**Brass FJIC X Teflon Hose Coupler**

Medium pressure, 3 piece fitting, crimped, and with a smooth bore. Made of brass.

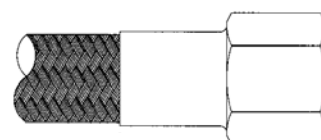
| Part#     | Size |
|-----------|------|
| HYDCT8FJ  | 1/2" |
| HYDCT12FJ | 3/4" |



**Stainless Steel FJIC X Teflon Hose Coupler**

Medium pressure, 3 piece fitting, crimped, and with a smooth bore. Made of stainless steel.

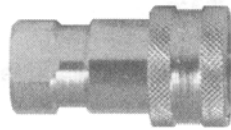
| Part#       | Description |
|-------------|-------------|
| HYDCT8FJSS  | 1/2"        |
| HYDCT12FJSS | 3/4"        |



**Hydraulic ORB Ball Valve Coupler**

**Part# HYD18-415**

1/2" Steel ISO C hydraulic coupler with ORB port.



**Hydraulic ORB Ball Valve Plug**

**Part# HYD19-415**

1/2" Steel ISO C hydraulic plug with ORB port



**Agricultural Hydraulic Quick Connect Fitting**

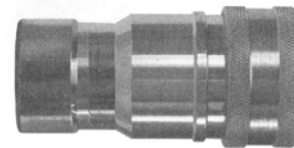
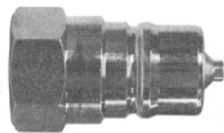
Steel ISO C hydraulic fittings with NPT ports. Quick connect features ball style shut-off valves in both the coupler and plug. **Interchangeable with Pioneer 4000 series and Safeway Agricultural series.**



| Part#            | Description            |
|------------------|------------------------|
| <b>HYD18-600</b> | Steel 1/2" FPT Coupler |
| <b>HYD18-660</b> | Steel 3/4" FPT Coupler |
| <b>HYD19-600</b> | Steel 1/2" FPT Plug    |
| <b>HYD19-660</b> | Steel 3/4" FPT Plug    |

**Dixon 5600 Series Hydraulic Quick-Connect Fittings**

The 5600 Series is interchangeable with the Aeroquip 5600, Parker 6600, and ISO A interchange. The two-way check valves in the plug and socket automatically balance in flow position and provide instant shut off when disconnected. Easy and fast connect and disconnect of fluid or gas lines equals minimal loss of product from either end.



| Part#            | Body and NPT Thread Size |
|------------------|--------------------------|
| <b>HYD56-400</b> | 1/2" x 1/2"-14           |
| <b>HYD56-600</b> | 1/2" x 3/4"-14           |
| <b>HYD56-660</b> | 3/4" x 3/4"-14           |
| <b>HYD56-800</b> | 1" x 1"-11 1/2           |

| Part#            | Body and NPT Thread Size |
|------------------|--------------------------|
| <b>HYD57-400</b> | 1/2" x 1/2"-14           |
| <b>HYD57-600</b> | 1/2" x 3/4"-14           |
| <b>HYD57-660</b> | 3/4" x 3/4"-14           |
| <b>HYD56-800</b> | 1" x 1"-11 1/2           |

**ISO FF 3/4" Hydraulic Coupler and Plug**

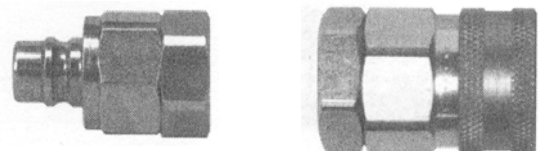
Steel, flush face ISO16028 hydraulic coupler and plug with an operating pressure of 5000 PSI. **Interchangeable with Aeroquip FD89, Parker FE, Snap-tite 74, Faster FF, and Holmbury Series.**



| Part#           | Description  |
|-----------------|--------------|
| <b>HYD6HTF6</b> | 3/4" Coupler |
| <b>HYDHT6F6</b> | 3/4" Plug    |

**VH Series 3/4" Hydraulic Coupler and Plug**

General purpose hydraulic quick-connect provides superior flow characteristics with built in reliability. Standard seal is Buan-N. Made of zinc plated steel. **Interchangeable with Snap-tite H Series.**



| Part#            | Description  |
|------------------|--------------|
| <b>HYDVHC600</b> | 3/4" Coupler |
| <b>HYDVHN600</b> | 3/4" Plug    |

**Parker Hydraulic Coupler and Nipple**

Parker spacer Bruning 3/4" steel hydraulic coupler and plug.



| Part#         | Description  |
|---------------|--------------|
| HYDNS751-12FP | 3/4" Coupler |
| HYDNS752-12FP | 3/4" Nipple  |

**Parker 3/4" Coupler and Adapter**

Steel Parker SM Series 3/4" coupler and adapter.



| Part#         | Size         |
|---------------|--------------|
| HYDSM501-12FP | 3/4" Coupler |
| HYDSM502-12FP | 3/4" Adapter |

**Safeway Coupler and Adapter**

Safeway steel 100 Series hydraulic couplers and adapters.



| Part#     | Description  |
|-----------|--------------|
| HYDS105-4 | 1/2" Coupler |
| HYDS105-6 | 3/4" Coupler |
| HYDS101-4 | 1/2" Adapter |
| HYDS101-6 | 3/4" Adapter |

**Tomko Couplers and Adapters**

Steel T Series coupler and adapters for use in hydraulic applications.

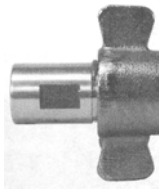
For more information on any hydraulic coupler contact DBL.



| Part#  | Description  |
|--------|--------------|
| HYDTH6 | 3/4" Coupler |
| HYDTH8 | 1" Coupler   |
| HYDTK6 | 3/4" Adapter |
| HYDTK8 | 1" Adapter   |

**Dixon Hydraulic Coupler with Wing Nut**

7800 Series steel hydraulic couplers for agricultural applications. Made of brass. Interchangeable with Aeroquip 5100 series, Parker 6100 series, and Snap-tite 78 series. Widely used on dump trailer wet-line hydraulic systems and oil field equipment.



| Part#      | Size   |
|------------|--------|
| HYD78-600  | 3/4"   |
| HYD78-800  | 1"     |
| HYD78-1000 | 1-1/4" |
| HYD78-1200 | 1-1/2" |

**Dixon Hydraulic Dust Plug**

7800 Series dust plugs for agricultural applications.



| Part#     | Size   |
|-----------|--------|
| HYD78-006 | 3/4"   |
| HYD78-008 | 1"     |
| HYD78-010 | 1-1/4" |
| HYD78-012 | 1-1/2" |

**Dixon Hydraulic Dust Cap**

7800 Series steel hydraulic dust caps for agricultural applications. Made of brass.



| Part#     | Size   |
|-----------|--------|
| HYD79-006 | 3/4"   |
| HYD79-008 | 1"     |
| HYD79-010 | 1-1/4" |
| HYD79-012 | 1-1/2" |

**Dixon Hydraulic Plug**

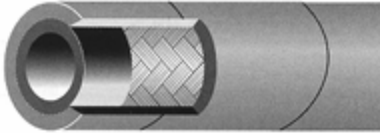
7800 Series steel hydraulic plugs for agricultural applications. Made of brass. Interchangeable with Aeroquip 5100 series, Parker 6100 series, and Snap-tite 78 series. Widely used on dump trailer wet-line hydraulic systems and oil field equipment.



| Part#      | Size   |
|------------|--------|
| HYD79-600  | 3/4"   |
| HYD79-800  | 1"     |
| HYD79-1000 | 1-1/4" |
| HYD79-1200 | 1-1/2" |

**Hydra-Lite I Wire Braid Hydraulic Hose**

One wire high tensile steel braid in sizes 1/4" thru 1/2" and two wire high tensile steel. Black, oil and abrasion resistant Neoprene (CR). MSHA approved braid.

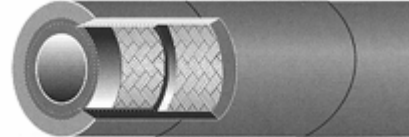


| Part#  | Description |
|--------|-------------|
| HYDH6  | 3/8"        |
| HYDH8  | 1/2"        |
| HYDH10 | 5/8"        |
| HYDH12 | 3/4"        |

**Hydra-Lite II 1" Wire Braid Hydraulic Hose**

**Part# HYDH16**

Two wire braid made of high tensile steel. Black, oil abrasion Neoprene (CR). MSHA approved.



**Stainless Steel Teflon Hose**

Stainless steel Teleflex medium pressure, smooth bore Teflon lined hose.



| Part#   | Description |
|---------|-------------|
| HYDHT8  | 1/2"        |
| HYDHT12 | 3/4"        |

**Flow Control Valve**

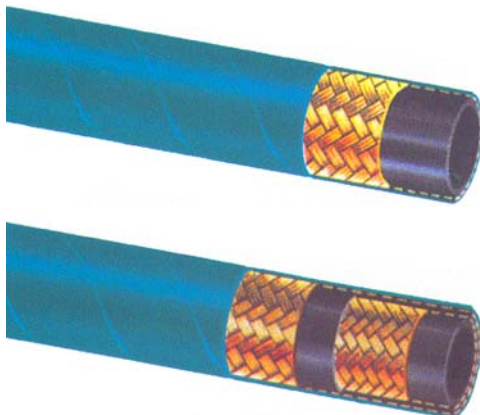
**Part# HYDVFC**

Cast iron body, 25 GPM valve, with 1" ORB and pressure relief on inlet.



**Kurlyama Temp-Tech 300 F Hoses**

Single or double braid wire. Meets or exceeds SAE 100 R1AT (single braid) and SAE 100 R2AT (double braid). Single braid available in sizes 3/8" through 1-1/4" ID. Double braid available in sizes 1/4" through 2" ID.



**Alfatech Constant Working Pressure Hoses**

The Alfatech series of hoses, designed with the application engineer in mind, simplifies system routing by offering the same working pressure ratings for all sizes of the respective hose.



DBL can install  
or modify any existing  
hydraulic system or other  
to meet the needs of its customers.  
Call to see what we can offer  
your company.

Competitor's Work



DBL's Work

