

Light Boxes & Light Brackets

DBL's fabrication department stocks 13 different styles of the tank industry's most popular light boxes. All light boxes are made in-house with attention given to every detail to ensure a clean and appealing light box. If you cannot find the light box you are looking for we can custom make a light box to your exact specifications. Whatever your light box needs are DBL's fabrication department can meet them.

In addition to light boxes, DBL stocks 5 different styles of light brackets with the option of customizing your own light bracket for your tank or trailer.

Hell Stainless Steel Light Box

18 gauge stainless steel construction with a 10 gauge mounting plate for extra support. Dimensions: 8" tall, 5" deep, and 27" long. Four 7/16" holes for mounting. Available in two hole sizes to accommodate Betts or Trucklite Lights. Standard 2-3/4" marker light on both. Please specify Betts or Trucklite style when ordering.



Butler Stainless Steel Light Box

18 gauge body and face, 14 gauge light end, and 10 gauge mounting plate. Dimensions; 8-1/4" tall, 5-1/2" deep, and 26-1/4" long. Two 4-3/4" holes for Betts lights and one 2-3/4" standard hole for marker light. Mounting plate has five 7/16" holes plus wiring holes.



Fruehauf Stainless Steel Light Box

16 gauge body and face, 14 gauge light end, and 10 gauge channel mount. Dimensions; 10" tall, 5-1/2" deep, and 26-1/4" long. Channel mount style with wiring holes and four 7/16" holes for mounting. Two 4-3/4" holes for Betts lights and one 2-3/4" hole for marker light.



Fruehauf Aluminum Light Box

.125 light end and face, .090 body, and .250 channel mount. Dimensions; 10" tall, 5-1/2" deep, and 26-1/4" long. Channel mount style with wiring holes and four 7/16" holes for mounting. Two 4-3/4" holes for Betts lights and one 3" hole for marker light.



Brenner Stainless Steel Light Box

18 gauge stainless steel construction with a 10 gauge channel style mount for extra support. Dimensions; 7-5/8" tall, 4-5/8" deep, and 27-1/2" long. Two 4-1/2" holes for Trucklite lights and one 2-3/4" hole for standard side marker. Four 7/16" mounting holes.



Polar Stainless Steel Light Box

18 gauge body, 14 gauge light end, and 10 gauge mounting plate. Dimensions; 7" tall, 4-1/4" deep, and 27-1/4" long. Two 4-1/2" holes for Trucklite lights and one 2-3/4" hole for standard side marker. Four 9/16" holes for mounting.



Hell Aluminum Extruded Light Box

.125 extrusion, .090 back, .190 light end and .250 mounting plate. Dimensions; 6" tall, 5" deep, and 28-1/2" long. Two 4-3/4" holes for Betts lights and one 2-3/4" hole for standard side marker. Four 7/16" holes for mounting.



Hell Aluminum End Mount Light Box

.125 body, .125 light end, and .250 mounting plate. Dimensions; 6" tall, 4-1/2" deep, and 27-1/2" long. Two 4-3/4" holes for Betts lights and one 2-3/4" hole for standard side marker. Four 7/16" x 5/8" slotted holes for mounting.



Hell Aluminum Back Mount Light Box

.125 body, light end, and wire end. Dimensions; 6" tall, 3-1/2" deep, and 27-1/2" long. Two 4-3/4" holes for Betts lights and one 2-3/4" hole for standard marker light. Three 7/16" x 5/8" slotted holes for mounting. Stainless steel reinforcement plate included.



Walker Stainless Steel Farm Pick-Up Light Box

Completely 16 gauge. Dimensions; 16" tall, 11-1/2" wide, and 12" deep. Three 4-1/2" holes for Trucklite lights and one 2-3/4" hole for standard side marker. No mounting holes.



Walker Stainless Steel Transport Light Box

18 gauge BA body and 10 gauge mounting plate. Dimensions 8" tall, 8" wide, and 28" long. Two 4-1/2" holes for Trucklite lights and one 2-3/4" hole for standard side marker. Three 9/16" holes for mounting.



Walker Stainless Steel Farm Pick-Up Light Box

Completely 16 gauge #4F. Dimensions; 21" tall, 9" deep, and 6" wide. Three 4-1/2" holes for Trucklite lights and 2-3/4" for standard side marker. 1-1/2" wire hole in back for wiring access. No mounting holes.



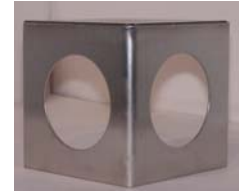
Stainless Steel Oval Midship Light Bracket

16 gauge stainless steel with 2-1/2" x 6-3/4" oval hole.



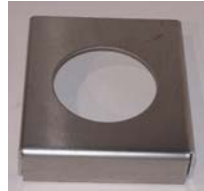
Rear Marker Light Bracket

Made of 16 gauge stainless steel with two 2-3/4" holes and a 4-1/2" square base for mounting. Dimensions: 4-1/2" x 4-1/2".



Walker Marker Light Bracket

Made of .090 Aluminum 5052 with standard 2-3/4" opening for side marker. Does not accept 1" x 4" reflector.



Walker Front Fender Marker Light Bracket

Made of .090 Aluminum 5052 with standard 2-3/4" opening for side marker. Accepts 1" x 4" reflector.



Walker Aluminum Oval Midship Light Bracket

Made of .090 aluminum 5052 with 2-1/2" x 6-3/4" oval hole.



DBL carries a large selection of Betts and Truck-Lite lights and accessories. To see what DBL has to offer please refer to pages 46-89 in the Electrical Section.

